



中国认可  
国际互认  
检测  
TESTING  
CNAS L5510

第 1 页 共 36 页

报告编号: CNRSJX2023-0310

# 检测报告

产品名称: 飞科电吹风

委托单位: 上海飞科电器股份有限公司

检测类别: 委托检测

嘉兴威凯检测技术有限公司

## 检测报告

产品名称	飞科电吹风	型号规格	送检型号: FH6370 (珍珠白) 覆盖型号: 详见报告第 3 页
委托单位	上海飞科电器股份有限公司	地址	上海市松江区广富林东路 555 号
样品数量	各 1 件	样品标识	0310-1~0310-3
接样方式	自送	检测类别	委托检测
接样日期	2023-12-07	完成日期	2023-12-18
检测项目	样品中铅、镉、汞、六价铬、多溴联苯、多溴二苯醚含量、邻苯二甲酸酯 (DEHP, BBP, DBP, DIBP) 含量		
检测依据	GB/T 39560.2-2020, GB/T 39560.301-2020, GB/T 39560.4-2021, GB/T 39560.5-2021, GB/T 39560.701-2020, GB/T 39560.6-2020, GB/T 39560.8-2021, GB/T 26572-2011, 《达标管理目录限用物质应用例外清单》		
检测结论	所检项目的结果符合 GB/T 26572-2011, 《达标管理目录限用物质应用例外清单》中的限值要求及委托方要求。  <p style="text-align: right;">检测单位盖章</p> <p style="text-align: right;">签发日期: 2023 年 12 月 21 日</p>		

批准: 王雄辉

审核: 汤冬梅

主检: 刘敏

## 样品描述及说明

样品照片:



送检型号: FH6370 (珍珠白)



送覆盖号: FH6370 (太空灰)



覆盖型号: FH6370 (公主粉)

依据委托单位提供同材质声明, 以下覆盖型号中零部件的材质除差异件(序号 129~146)外, 其他材质与送检型号 FH6370 (珍珠白) 中零部件的材质一致。

覆盖型号: FH6370 (太空灰)、FH6370 (公主粉)

制 造 商: 上海飞科电器股份有限公司

制造商地址: 上海市松江区广富林东路 555 号

样品拆分清单					
序号	组件/部件/元器件		检测单元		备注
	编号	名称	编号	名称	
1	1	外壳	1-1	塑料壳体白色涂层	—
2			1-2	塑料壳体灰色基材	—
3			1-3	白色塑料把柄外壳	—
4			1-4	灰色塑料把柄内壳	—
5			1-5	白色塑料吸气罩	—
6			1-6	银色磁铁	—
7			1-7	银色金属垫圈	—
8			1-8	白色塑料支架	—
9			1-9	银色金属过滤网	—
10			1-10	灰色塑料支架	—
11			1-11	白色纤维垫	—
12			1-12	黄色塑料膜	—
13			1-13	金属盘头螺丝银色镀层	—
14			1-14	金属盘头螺丝银色基材	—
15			1-15	银色金属圈	—
16			1-16	金属螺丝银色镀层	—
17			1-17	金属螺丝银色基材	—
18			1-18	白色塑料集风嘴	—
19			1-19	黑色塑料内壳	—
20			1-20	黑色塑料支架	—
21			1-21	金属螺丝黑色镀层	—
22			1-22	金属螺丝银色基材	—
23	2	加热组件	2-1	黑色塑料固定架	—
24			2-2	银灰色塑料散热片	—
25			2-3	金色金属触片	—
26			2-4	黑色塑料支架	—
27			2-5	银色金属触点	—
28			2-6	金色金属铆钉	—
29			2-7	铜色金属触片	—
30			2-8	红色玻封二极管	—

样品拆分清单					
序号	组件/部件/元器件		检测单元		备注
	编号	名称	编号	名称	
31	2	加热组件	2-9	黑色塑料固定架	—
32			2-10	银色金属加热丝	—
33			2-11	银色金属熔断电阻	—
34	3	电机	3-1	银色金属外壳	—
35			3-2	黑色塑料绕线架	—
36			3-3	漆包线	—
37			3-4	透明灌封胶	—
38			3-5	银色金属轴	—
39			3-6	银色磁铁	—
40			3-7	银色金属叶轮	—
41			3-8	PCB 板基材	—
42			3-9	银色金属焊锡	—
43			3-10	白色塑料插座	—
44			3-11	白色橡胶外壳	—
45	4	显示组件	4-1	塑料盖白色涂层	—
46			4-2	塑料盖米色基材	—
47			4-3	PCB 板基材	—
48			4-4	银色金属焊锡	—
49			4-5	贴片电容	—
50			4-6	贴片电阻	—
51			4-7	贴片三极管	—
52			4-8	黑色芯片	—
53			4-9	米黄色塑料插座	—
54			4-10	白色灌封胶	—
55			4-11	透明 LED 灯	—
56			4-12	黄色 LED 灯	—
57			4-13	黑色海绵垫	—
58	5	开关	5-1	白色塑料划片	—
59			5-2	塑料按钮白色涂层	—
60			5-3	塑料按钮米色基材	—

样品拆分清单					
序号	组件/部件/元器件		检测单元		备注
	编号	名称	编号	名称	
61	5	开关	5-4	PCB 板基材	—
62			5-5	银色金属焊锡	—
63			5-6	黑色塑料底座	—
64			5-7	银色金属支架	—
65			5-8	金色金属按钮	—
66			5-9	银色金属振片	—
67			5-10	黄色塑料膜	—
68			5-11	米黄色塑料插座	—
69			5-12	黑色塑料外壳	—
70			5-13	黑色塑料开关滑块	—
71			5-14	银色金属焊锡	—
72			5-15	铜色金属触片	—
73			5-16	银色金属触点	—
74			5-17	银色金属钢珠	—
75	6	主控板	6-1	PCB 板基材	—
76			6-2	银色金属焊锡	—
77			6-3	贴片电容	—
78			6-4	贴片电阻	—
79			6-5	贴片二极管	—
80			6-6	黑色芯片	—
81			6-7	黄色芯片	—
82			6-8	白色灌封胶	—
83			6-9	黑色陶瓷电容	—
84			6-10	蓝色陶瓷电容	—
85			6-11	电解电容黑色塑料外壳	—
86			6-12	银色铝壳	—
87			6-13	黄色电解纸	—
88			6-14	银色塑料膜	—
89			6-15	黑色橡胶塞	—
90			6-16	银色金属引脚	—

样品拆分清单							
序号	组件/部件/元器件		检测单元		备注		
	编号	名称	编号	名称			
91	6	主控板	6-17	黑色电容	—		
92			6-18	银色金属固定片	—		
93			6-19	安规电容黄色塑料外壳	—		
94			6-20	黄色灌封胶	—		
95			6-21	电感磁环绿色涂层	—		
96			6-22	电感磁环黑色基材	—		
97			6-23	漆包线	—		
98			6-24	黑色塑料支架	—		
99			6-25	发生器黑色塑料外壳	—		
100			6-26	红色灌封胶	—		
101			6-27	金属螺丝银色镀层	—		
102			6-28	金属螺丝银色基材	—		
103			7	线束组件	7-1	白色橡胶外被	—
104					7-2	棕色橡胶外被	—
105	7-3	蓝色橡胶外被			—		
106	7-4	红色橡胶外被			—		
107	7-5	黄色橡胶外被			—		
108	7-6	黑色橡胶外被			—		
109	7-7	白色橡胶外被			—		
110	7-8	蓝色橡胶外被			—		
111	7-9	红色橡胶外被			—		
112	7-10	黄色橡胶外被			—		
113	7-11	银色金属丝			—		
114	7-12	黑色橡胶管			—		
115	7-13	银色金属插头			—		
116	7-14	白色塑料接插件			—		
117	7-15	米黄色塑料插座			—		
118	7-16	红色塑料插头			—		
119	8	电源线	8-1	白色橡胶外壳	—		
120			8-2	米黄色塑料内壳	—		

样品拆分清单							
序号	组件/部件/元器件		检测单元		备注		
	编号	名称	编号	名称			
121	8	电源线	8-3	米色塑料支架	—		
122			8-4	银色金属插片	—		
123			8-5	白色橡胶管	—		
124			8-6	蓝色橡胶外被	—		
125			8-7	灰色橡胶外被	—		
126			8-8	铜导线	—		
127			8-9	白色橡胶扎带	—		
128			8-10	白色塑料护套	—		
129			9	外壳（差异件，型号：FH6370（太空灰））	9-1	黑色塑料集风嘴	—
130					9-2	塑料壳体黑色涂层	—
131	9-3	黑色塑料把柄外壳			—		
132	9-4	黑色塑料吸气罩			—		
133	9-5	塑料盖黑色涂层			—		
134	9-6	塑料按钮黑色涂层			—		
135	9-7	黑色橡胶外壳			—		
136	9-8	黑色橡胶管			—		
137	9-9	黑色橡胶扎带			—		
138	10	外壳（差异件，型号：FH6370（公主粉））			10-1	粉色塑料集风嘴	—
139			10-2	塑料壳体粉色涂层	—		
140			10-3	粉色塑料把柄外壳	—		
141			10-4	粉色塑料吸气罩	—		
142			10-5	塑料盖粉色涂层	—		
143			10-6	塑料按钮粉色涂层	—		
144			10-7	粉色橡胶外壳	—		
145			10-8	粉色橡胶管	—		
146			10-9	粉色橡胶扎带	—		

## 检测结果及判定

序号	检测单元名称	筛选检测结果(mg/kg)						确证检测结果(mg/kg)							判定
		铅 (Pb)	镉 (Cd)	汞 (Hg)	总铬 (Cr)	总溴 (Br)	筛选判定	铅 (Pb)	镉 (Cd)	汞 (Hg)	六价铬 (Cr <sup>6+</sup> )		多溴联苯 (PBBs)	多溴二苯醚 (PBDEs)	
											金属镀层	其他材料			
1	塑料壳体白色涂层	N.D.	N.D.	N.D.	N.D.	N.D.	P	/	/	/	/	/	/	/	P
2	塑料壳体灰色基材	N.D.	N.D.	N.D.	N.D.	N.D.	P	/	/	/	/	/	/	/	P
3	白色塑料把柄外壳	N.D.	N.D.	N.D.	N.D.	N.D.	P	/	/	/	/	/	/	/	P
4	灰色塑料把柄内壳	N.D.	N.D.	N.D.	N.D.	N.D.	P	/	/	/	/	/	/	/	P
5	白色塑料吸气罩	N.D.	N.D.	N.D.	N.D.	N.D.	P	/	/	/	/	/	/	/	P
6	银色磁铁	/	/	/	/	—	V	N.D.	N.D.	N.D.	阴性	/	/	/	P
7	银色金属垫圈	N.D.	N.D.	N.D.	N.D.	—	P	/	/	/	/	/	/	/	P
8	白色塑料支架	N.D.	N.D.	N.D.	N.D.	N.D.	P	/	/	/	/	/	/	/	P
9	银色金属过滤网	N.D.	N.D.	N.D.	9.0 × 10 <sup>4</sup>	—	V	/	/	/	阴性	/	/	/	P
10	灰色塑料支架	N.D.	N.D.	N.D.	N.D.	N.D.	P	/	/	/	/	/	/	/	P
11	白色纤维垫	N.D.	N.D.	N.D.	N.D.	N.D.	P	/	/	/	/	/	/	/	P
12	黄色塑料膜	N.D.	N.D.	N.D.	N.D.	N.D.	P	/	/	/	/	/	/	/	P
13	金属盘头螺丝银色镀层	N.D.	N.D.	N.D.	/	—	V	/	/	/	阴性	/	/	/	P
14	金属盘头螺丝银色基材	N.D.	N.D.	N.D.	N.D.	—	P	/	/	/	/	/	/	/	P
15	银色金属圈	N.D.	N.D.	N.D.	1.1 × 10 <sup>5</sup>	—	V	/	/	/	阴性	/	/	/	P
16	金属螺丝银色镀层	N.D.	N.D.	N.D.	/	—	V	/	/	/	阴性	/	/	/	P
17	金属螺丝银色基材	N.D.	N.D.	N.D.	N.D.	—	P	/	/	/	/	/	/	/	P
18	白色塑料集风嘴	N.D.	N.D.	N.D.	N.D.	N.D.	P	/	/	/	/	/	/	/	P

## 检测结果及判定

序号	检测单元名称	筛选检测结果(mg/kg)						确证检测结果(mg/kg)						判定	
		铅 (Pb)	镉 (Cd)	汞 (Hg)	总铬 (Cr)	总溴 (Br)	筛选判定	铅 (Pb)	镉 (Cd)	汞 (Hg)	六价铬 (Cr <sup>6+</sup> )		多溴联苯 (PBBs)		多溴二苯醚 (PBDEs)
											金属镀层	其他材料			
19	黑色塑料内壳	N.D.	N.D.	N.D.	N.D.	N.D.	P	/	/	/	/	/	/	/	P
20	黑色塑料支架	N.D.	N.D.	N.D.	N.D.	N.D.	P	/	/	/	/	/	/	/	P
21	金属螺丝黑色镀层	N.D.	N.D.	N.D.	/	—	V	/	/	/	阴性	/	/	/	P
22	金属螺丝银色基材	N.D.	N.D.	N.D.	N.D.	—	P	/	/	/	/	/	/	/	P
23	黑色塑料固定架	N.D.	N.D.	N.D.	N.D.	1.1 × 10 <sup>5</sup>	V	/	/	/	/	/	N.D.	N.D.	P
24	银灰色塑料散热片	N.D.	N.D.	N.D.	N.D.	N.D.	P	/	/	/	/	/	/	/	P
25	金色金属触片	N.D.	N.D.	N.D.	N.D.	—	P	/	/	/	/	/	/	/	P
26	黑色塑料支架	N.D.	N.D.	N.D.	N.D.	N.D.	P	/	/	/	/	/	/	/	P
27	银色金属触点	N.D.	N.D.	N.D.	N.D.	—	P	/	/	/	/	/	/	/	P
28	金色金属铆钉	2.8 × 10 <sup>4</sup>	N.D.	N.D.	N.D.	—	P ▲2	2.6 × 10 <sup>4</sup>	/	/	/	/	/	/	P ▲2
29	铜色金属触片	N.D.	N.D.	N.D.	N.D.	—	P	/	/	/	/	/	/	/	P
30	红色玻封二极管	9.0 × 10 <sup>5</sup>	N.D.	N.D.	N.D.	—	P ▲1	4.8 × 10 <sup>5</sup>	/	/	/	/	/	/	P ▲1
31	黑色塑料固定架	N.D.	N.D.	N.D.	N.D.	1.0 × 10 <sup>5</sup>	V	/	/	/	/	/	N.D.	N.D.	P
32	银色金属加热丝	N.D.	N.D.	N.D.	3.9 × 10 <sup>5</sup>	—	V	/	/	/	阴性	/	/	/	P
33	银色金属熔断电阻	N.D.	N.D.	N.D.	N.D.	—	P	/	/	/	/	/	/	/	P
34	银色金属外壳	N.D.	N.D.	N.D.	N.D.	—	P	/	/	/	/	/	/	/	P
35	黑色塑料绕线架	N.D.	N.D.	N.D.	N.D.	N.D.	P	/	/	/	/	/	/	/	P
36	漆包线	N.D.	N.D.	N.D.	N.D.	—	P	/	/	/	/	/	/	/	P

## 检测结果及判定

序号	检测单元名称	筛选检测结果(mg/kg)						确证检测结果(mg/kg)							判定
		铅 (Pb)	镉 (Cd)	汞 (Hg)	总铬 (Cr)	总溴 (Br)	筛选判定	铅 (Pb)	镉 (Cd)	汞 (Hg)	六价铬 (Cr <sup>6+</sup> )		多溴联苯 (PBBs)	多溴二苯醚 (PBDEs)	
											金属镀层	其他材料			
37	透明灌密封胶	N.D.	N.D.	N.D.	N.D.	N.D.	P	/	/	/	/	/	/	/	P
38	银色金属轴	N.D.	N.D.	N.D.	N.D.	—	P	/	/	/	/	/	/	/	P
39	银色磁铁	/	/	/	/	—	V	N.D.	N.D.	N.D.	阴性	/	/	/	P
40	银色金属叶轮	N.D.	N.D.	N.D.	1748	—	V	/	/	/	阴性	/	/	/	P
41	PCB 板基材	N.D.	N.D.	N.D.	N.D.	2.7 × 10 <sup>4</sup>	V	/	/	/	/	/	N.D.	N.D.	P
42	银色金属焊锡	N.D.	N.D.	N.D.	N.D.	—	P	/	/	/	/	/	/	/	P
43	白色塑料插座	N.D.	N.D.	N.D.	N.D.	N.D.	P	/	/	/	/	/	/	/	P
44	白色橡胶外壳	N.D.	N.D.	N.D.	N.D.	N.D.	P	/	/	/	/	/	/	/	P
45	塑料盖白色涂层	N.D.	N.D.	N.D.	N.D.	N.D.	P	/	/	/	/	/	/	/	P
46	塑料盖米色基材	N.D.	N.D.	N.D.	N.D.	N.D.	P	/	/	/	/	/	/	/	P
47	PCB 板基材	N.D.	N.D.	N.D.	N.D.	N.D.	P	/	/	/	/	/	/	/	P
48	银色金属焊锡	N.D.	N.D.	N.D.	N.D.	—	P	/	/	/	/	/	/	/	P
49	贴片电容	N.D.	N.D.	N.D.	N.D.	N.D.	P	/	/	/	/	/	/	/	P
50	贴片电阻	6233	N.D.	N.D.	N.D.	N.D.	P ▲1	3303	/	/	/	/	/	/	P ▲1
51	贴片三极管	N.D.	N.D.	N.D.	N.D.	N.D.	P	/	/	/	/	/	/	/	P
52	黑色芯片	N.D.	N.D.	N.D.	N.D.	N.D.	P	/	/	/	/	/	/	/	P
53	米黄色塑料插座	N.D.	N.D.	N.D.	N.D.	N.D.	P	/	/	/	/	/	/	/	P
54	白色灌密封胶	N.D.	N.D.	N.D.	N.D.	N.D.	P	/	/	/	/	/	/	/	P

## 检测结果及判定

序号	检测单元名称	筛选检测结果(mg/kg)						确证检测结果(mg/kg)							判定
		铅 (Pb)	镉 (Cd)	汞 (Hg)	总铬 (Cr)	总溴 (Br)	筛选判定	铅 (Pb)	镉 (Cd)	汞 (Hg)	六价铬 (Cr <sup>6+</sup> )		多溴联苯 (PBBs)	多溴二苯醚 (PBDEs)	
											金属镀层	其他材料			
55	透明 LED 灯	N.D.	N.D.	N.D.	N.D.	N.D.	P	/	/	/	/	/	/	/	P
56	黄色 LED 灯	N.D.	N.D.	N.D.	N.D.	N.D.	P	/	/	/	/	/	/	/	P
57	黑色海绵垫	N.D.	N.D.	N.D.	N.D.	N.D.	P	/	/	/	/	/	/	/	P
58	白色塑料划片	N.D.	N.D.	N.D.	N.D.	N.D.	P	/	/	/	/	/	/	/	P
59	塑料按钮白色涂层	N.D.	N.D.	N.D.	N.D.	N.D.	P	/	/	/	/	/	/	/	P
60	塑料按钮米色基材	N.D.	N.D.	N.D.	N.D.	N.D.	P	/	/	/	/	/	/	/	P
61	PCB 板基材	N.D.	N.D.	N.D.	N.D.	7841	V	/	/	/	/	/	N.D.	N.D.	P
62	银色金属焊锡	N.D.	N.D.	N.D.	N.D.	—	P	/	/	/	/	/	/	/	P
63	黑色塑料底座	N.D.	N.D.	N.D.	N.D.	N.D.	P	/	/	/	/	/	/	/	P
64	银色金属支架	N.D.	N.D.	N.D.	1.1 × 10 <sup>5</sup>	—	V	/	/	/	阴性	/	/	/	P
65	金色金属按钮	N.D.	N.D.	N.D.	N.D.	—	P	/	/	/	/	/	/	/	P
66	银色金属振片	N.D.	N.D.	N.D.	9.7 × 10 <sup>4</sup>	—	V	/	/	/	阴性	/	/	/	P
67	黄色塑料膜	N.D.	N.D.	N.D.	N.D.	N.D.	P	/	/	/	/	/	/	/	P
68	米黄色塑料插座	N.D.	N.D.	N.D.	N.D.	N.D.	P	/	/	/	/	/	/	/	P
69	黑色塑料外壳	N.D.	N.D.	N.D.	N.D.	9.1 × 10 <sup>4</sup>	V	/	/	/	/	/	N.D.	N.D.	P
70	黑色塑料开关滑块	N.D.	N.D.	N.D.	N.D.	9.3 × 10 <sup>4</sup>	V	/	/	/	/	/	N.D.	N.D.	P
71	银色金属焊锡	N.D.	N.D.	N.D.	N.D.	—	P	/	/	/	/	/	/	/	P
72	铜色金属触片	N.D.	N.D.	N.D.	N.D.	—	P	/	/	/	/	/	/	/	P

## 检测结果及判定

序号	检测单元名称	筛选检测结果(mg/kg)						确证检测结果(mg/kg)							判定
		铅 (Pb)	镉 (Cd)	汞 (Hg)	总铬 (Cr)	总溴 (Br)	筛选判定	铅 (Pb)	镉 (Cd)	汞 (Hg)	六价铬 (Cr <sup>6+</sup> )		多溴联苯 (PBBs)	多溴二苯醚 (PBDEs)	
											金属镀层	其他材料			
73	银色金属触点	N.D.	1.8 × 10 <sup>4</sup>	N.D.	N.D.	—	P ▲3	/	1674	/	/	/	/	/	P ▲3
74	银色金属钢珠	N.D.	N.D.	N.D.	N.D.	—	P	/	/	/	/	/	/	/	P
75	PCB 板基材	N.D.	N.D.	N.D.	N.D.	3.4 × 10 <sup>4</sup>	V	/	/	/	/	/	N.D.	N.D.	P
76	银色金属焊锡	N.D.	N.D.	N.D.	N.D.	—	P	/	/	/	/	/	/	/	P
77	贴片电容	N.D.	N.D.	N.D.	N.D.	N.D.	P	/	/	/	/	/	/	/	P
78	贴片电阻	N.D.	N.D.	N.D.	N.D.	N.D.	P	/	/	/	/	/	/	/	P
79	贴片二极管	N.D.	N.D.	N.D.	N.D.	N.D.	P	/	/	/	/	/	/	/	P
80	黑色芯片	N.D.	N.D.	N.D.	N.D.	N.D.	P	/	/	/	/	/	/	/	P
81	黄色芯片	N.D.	N.D.	N.D.	N.D.	N.D.	P	/	/	/	/	/	/	/	P
82	白色灌封胶	N.D.	N.D.	N.D.	N.D.	N.D.	P	/	/	/	/	/	/	/	P
83	黑色陶瓷电容	N.D.	N.D.	N.D.	N.D.	—	P	/	/	/	/	/	/	/	P
84	蓝色陶瓷电容	N.D.	N.D.	N.D.	N.D.	—	P	/	/	/	/	/	/	/	P
85	电解电容黑色塑料外壳	N.D.	N.D.	N.D.	N.D.	N.D.	P	/	/	/	/	/	/	/	P
86	银色铝壳	N.D.	N.D.	N.D.	N.D.	—	P	/	/	/	/	/	/	/	P
87	黄色电解纸	N.D.	N.D.	N.D.	N.D.	N.D.	P	/	/	/	/	/	/	/	P
88	银色塑料膜	N.D.	N.D.	N.D.	N.D.	N.D.	P	/	/	/	/	/	/	/	P
89	黑色橡胶塞	N.D.	N.D.	N.D.	N.D.	N.D.	P	/	/	/	/	/	/	/	P
90	银色金属引脚	N.D.	N.D.	N.D.	N.D.	—	P	/	/	/	/	/	/	/	P

## 检测结果及判定

序号	检测单元名称	筛选检测结果(mg/kg)						确证检测结果(mg/kg)							判定
		铅 (Pb)	镉 (Cd)	汞 (Hg)	总铬 (Cr)	总溴 (Br)	筛选判定	铅 (Pb)	镉 (Cd)	汞 (Hg)	六价铬 (Cr <sup>6+</sup> )		多溴联苯 (PBBs)	多溴二苯醚 (PBDEs)	
											金属镀层	其他材料			
91	黑色电容	N.D.	N.D.	N.D.	N.D.	N.D.	P	/	/	/	/	/	/	/	P
92	银色金属固定片	N.D.	N.D.	N.D.	N.D.	—	P	/	/	/	/	/	/	/	P
93	安规电容黄色塑料外壳	N.D.	N.D.	N.D.	N.D.	3.1 × 10 <sup>4</sup>	V	/	/	/	/	/	N.D.	N.D.	P
94	黄色灌封胶	N.D.	N.D.	N.D.	N.D.	1.4 × 10 <sup>4</sup>	V	/	/	/	/	/	N.D.	N.D.	P
95	电感磁环绿色涂层	N.D.	N.D.	N.D.	N.D.	N.D.	P	/	/	/	/	/	/	/	P
96	电感磁环黑色基材	/	/	/	/	—	V	N.D.	N.D.	N.D.	阴性	/	/	/	P
97	漆包线	N.D.	N.D.	N.D.	N.D.	—	P	/	/	/	/	/	/	/	P
98	黑色塑料支架	N.D.	N.D.	N.D.	N.D.	N.D.	P	/	/	/	/	/	/	/	P
99	发生器黑色塑料外壳	N.D.	N.D.	N.D.	N.D.	4.5 × 10 <sup>4</sup>	V	/	/	/	/	/	N.D.	N.D.	P
100	红色灌封胶	N.D.	N.D.	N.D.	N.D.	N.D.	P	/	/	/	/	/	/	/	P
101	金属螺丝银色镀层	N.D.	N.D.	N.D.	/	—	V	/	/	/	阴性	/	/	/	P
102	金属螺丝银色基材	N.D.	N.D.	N.D.	N.D.	—	P	/	/	/	/	/	/	/	P
103	白色橡胶外被	N.D.	N.D.	N.D.	N.D.	N.D.	P	/	/	/	/	/	/	/	P
104	棕色橡胶外被	N.D.	N.D.	N.D.	N.D.	N.D.	P	/	/	/	/	/	/	/	P
105	蓝色橡胶外被	N.D.	N.D.	N.D.	N.D.	N.D.	P	/	/	/	/	/	/	/	P
106	红色橡胶外被	N.D.	N.D.	N.D.	N.D.	N.D.	P	/	/	/	/	/	/	/	P
107	黄色橡胶外被	N.D.	N.D.	N.D.	N.D.	N.D.	P	/	/	/	/	/	/	/	P
108	黑色橡胶外被	N.D.	N.D.	N.D.	N.D.	N.D.	P	/	/	/	/	/	/	/	P

## 检测结果及判定

序号	检测单元名称	筛选检测结果(mg/kg)						确证检测结果(mg/kg)							判定
		铅 (Pb)	镉 (Cd)	汞 (Hg)	总铬 (Cr)	总溴 (Br)	筛选判定	铅 (Pb)	镉 (Cd)	汞 (Hg)	六价铬 (Cr <sup>6+</sup> )		多溴联苯 (PBBs)	多溴二苯醚 (PBDEs)	
											金属镀层	其他材料			
109	白色橡胶外被	N.D.	N.D.	N.D.	N.D.	N.D.	P	/	/	/	/	/	/	/	P
110	蓝色橡胶外被	N.D.	N.D.	N.D.	N.D.	N.D.	P	/	/	/	/	/	/	/	P
111	红色橡胶外被	N.D.	N.D.	N.D.	N.D.	N.D.	P	/	/	/	/	/	/	/	P
112	黄色橡胶外被	N.D.	N.D.	N.D.	N.D.	N.D.	P	/	/	/	/	/	/	/	P
113	银色金属丝	N.D.	N.D.	N.D.	N.D.	—	P	/	/	/	/	/	/	/	P
114	黑色橡胶管	N.D.	N.D.	N.D.	N.D.	N.D.	P	/	/	/	/	/	/	/	P
115	银色金属插头	N.D.	N.D.	N.D.	N.D.	—	P	/	/	/	/	/	/	/	P
116	白色塑料接插件	N.D.	N.D.	N.D.	N.D.	N.D.	P	/	/	/	/	/	/	/	P
117	米黄色塑料插座	N.D.	N.D.	N.D.	N.D.	N.D.	P	/	/	/	/	/	/	/	P
118	红色塑料插头	N.D.	N.D.	N.D.	N.D.	N.D.	P	/	/	/	/	/	/	/	P
119	白色橡胶外壳	N.D.	N.D.	N.D.	N.D.	N.D.	P	/	/	/	/	/	/	/	P
120	米黄色塑料内壳	N.D.	N.D.	N.D.	N.D.	N.D.	P	/	/	/	/	/	/	/	P
121	米色塑料支架	N.D.	N.D.	N.D.	N.D.	3.7 × 10 <sup>4</sup>	V	/	/	/	/	/	N.D.	N.D.	P
122	银色金属插片	N.D.	N.D.	N.D.	N.D.	—	P	/	/	/	/	/	/	/	P
123	白色橡胶管	N.D.	N.D.	N.D.	N.D.	N.D.	P	/	/	/	/	/	/	/	P
124	蓝色橡胶外被	N.D.	N.D.	N.D.	N.D.	N.D.	P	/	/	/	/	/	/	/	P
125	灰色橡胶外被	N.D.	N.D.	N.D.	N.D.	N.D.	P	/	/	/	/	/	/	/	P
126	铜导线	N.D.	N.D.	N.D.	N.D.	—	P	/	/	/	/	/	/	/	P

## 检测结果及判定

序号	检测单元名称	筛选检测结果(mg/kg)						确证检测结果(mg/kg)							判定
		铅 (Pb)	镉 (Cd)	汞 (Hg)	总铬 (Cr)	总溴 (Br)	筛选判定	铅 (Pb)	镉 (Cd)	汞 (Hg)	六价铬 (Cr <sup>6+</sup> )		多溴联苯 (PBBs)	多溴二苯醚 (PBDEs)	
											金属镀层	其他材料			
127	白色橡胶扎带	N.D.	N.D.	N.D.	N.D.	N.D.	P	/	/	/	/	/	/	/	P
128	白色塑料护套	N.D.	N.D.	N.D.	N.D.	N.D.	P	/	/	/	/	/	/	/	P
129	黑色塑料集风嘴	N.D.	N.D.	N.D.	N.D.	N.D.	P	/	/	/	/	/	/	/	P
130	塑料壳体黑色涂层	N.D.	N.D.	N.D.	N.D.	N.D.	P	/	/	/	/	/	/	/	P
131	黑色塑料把柄外壳	N.D.	N.D.	N.D.	N.D.	N.D.	P	/	/	/	/	/	/	/	P
132	黑色塑料吸气罩	N.D.	N.D.	N.D.	N.D.	N.D.	P	/	/	/	/	/	/	/	P
133	塑料盖黑色涂层	N.D.	N.D.	N.D.	N.D.	N.D.	P	/	/	/	/	/	/	/	P
134	塑料按钮黑色涂层	N.D.	N.D.	N.D.	N.D.	N.D.	P	/	/	/	/	/	/	/	P
135	黑色橡胶外壳	N.D.	N.D.	N.D.	N.D.	N.D.	P	/	/	/	/	/	/	/	P
136	黑色橡胶管	N.D.	N.D.	N.D.	N.D.	N.D.	P	/	/	/	/	/	/	/	P
137	黑色橡胶扎带	N.D.	N.D.	N.D.	N.D.	N.D.	P	/	/	/	/	/	/	/	P
138	粉色塑料集风嘴	N.D.	N.D.	N.D.	N.D.	N.D.	P	/	/	/	/	/	/	/	P
139	塑料壳体粉色涂层	N.D.	N.D.	N.D.	N.D.	N.D.	P	/	/	/	/	/	/	/	P
140	粉色塑料把柄外壳	N.D.	N.D.	N.D.	N.D.	N.D.	P	/	/	/	/	/	/	/	P
141	粉色塑料吸气罩	N.D.	N.D.	N.D.	N.D.	N.D.	P	/	/	/	/	/	/	/	P
142	塑料盖粉色涂层	N.D.	N.D.	N.D.	N.D.	N.D.	P	/	/	/	/	/	/	/	P
143	塑料按钮粉色涂层	N.D.	N.D.	N.D.	N.D.	N.D.	P	/	/	/	/	/	/	/	P
144	粉色橡胶外壳	N.D.	N.D.	N.D.	N.D.	N.D.	P	/	/	/	/	/	/	/	P

## 检测结果及判定

序号	检测单元名称	筛选检测结果(mg/kg)						确证检测结果(mg/kg)						判定	
		铅 (Pb)	镉 (Cd)	汞 (Hg)	总铬 (Cr)	总溴 (Br)	筛选判定	铅 (Pb)	镉 (Cd)	汞 (Hg)	六价铬 (Cr <sup>6+</sup> )		多溴联苯 (PBBs)		多溴二苯醚 (PBDEs)
											金属镀层	其他材料			
145	粉色橡胶管	N.D.	N.D.	N.D.	N.D.	N.D.	P	/	/	/	/	/	/	/	P
146	粉色橡胶扎带	N.D.	N.D.	N.D.	N.D.	N.D.	P	/	/	/	/	/	/	/	P

备注:

- 1) 对于 PBBs 和 PBDEs, 其筛选检测结果显示的是总 Br 含量, 对于 Cr<sup>6+</sup>, 其筛选检测结果显示的是总 Cr 含量;
- 2) “P”表示“通过”, “F”表示“不通过”, “V”表示“需进行确证检测”;
- 3) 筛选检测的限值范围见下表:

单位: mg/kg

检测物质	聚合物	金属材料	复合材料
Cd	P≤50<V<150≤F	P≤50<V<150≤F	P≤10<V<170≤F
Pb	P≤500<V<1500≤F	P≤500<V<1500≤F	P≤300<V<1700≤F
Hg	P≤500<V<1500≤F	P≤500<V<1500≤F	P≤300<V<1700≤F
Br	P≤200<V	—	P≤150<V
Cr	P≤500<V	P≤500<V	P≤300<V

- 4) “N.D.”表示“未检出 (低于报告限)”, “/”表示“未检测”, “—”表示“不适用”;
- 5) 筛选检测各检测物质的方法检出限见下表:

单位: mg/kg

检测物质	Cd	Pb	Hg	总 Br	总 Cr
报告限	10	10	10	10	10

- 6) 确证检测的限值和报告限见下表:

单位: mg/kg

检测物质	Cd	Pb	Hg	其他材料中的 Cr <sup>6+</sup>	金属镀层中的 Cr <sup>6+</sup>	PBBs	PBDEs
限值	100	1000	1000	1000	见备注 7)	1000	1000
报告限	5	5	5	5		50	50

- 7) 金属防腐材料 Cr<sup>6+</sup>检测结果的表述为: 由表面积为 50cm<sup>2</sup> 的样品所萃取出来的溶液中测得的六价铬的浓度, 阴性表示六价铬小于 0.10 μg/cm<sup>2</sup>, 判定为: 阴性 (Negative), 样品合格; 阳性表示六价铬大于 0.13 μg/cm<sup>2</sup>, 判定为: 阳性 (Positive), 样品不合格;
- 8) “▲1”根据达标管理目录限用物质应用例外清单中编号 8.3.1: 陶瓷及玻璃: 用于除介电陶瓷电容以外的电子电气元器件 (例如, 压电器件、玻璃和陶瓷的复合材料) 中的铅含量无限值要求;  
 “▲2”根据达标管理目录限用物质应用例外清单中编号 7.3: 铜合金 (铅作为合金元素) 含量不超 4%;  
 “▲3”根据达标管理目录限用物质应用例外清单中编号 34.2: 电触点中镉(Cd)无限值要求。

## 检测结果及判定

序号	检测单元名称	确证检测结果				判定
		邻苯二甲酸二(2-乙基己基酯) (DEHP)	邻苯二甲酸二丁苄酯 (BBP)	邻苯二甲酸二丁酯 (DBP)	邻苯二甲酸二异丁酯 (DIBP)	
1	塑料壳体白色涂层	N.D.	N.D.	N.D.	N.D.	P
2	塑料壳体灰色基材	N.D.	N.D.	N.D.	N.D.	P
3	白色塑料把柄外壳	N.D.	N.D.	N.D.	N.D.	P
4	灰色塑料把柄内壳	N.D.	N.D.	N.D.	N.D.	P
5	白色塑料吸气罩	N.D.	N.D.	N.D.	N.D.	P
6	银色磁铁	—	—	—	—	—
7	银色金属垫圈	—	—	—	—	—
8	白色塑料支架	N.D.	N.D.	N.D.	N.D.	P
9	银色金属过滤网	—	—	—	—	—
10	灰色塑料支架	N.D.	N.D.	N.D.	N.D.	P
11	白色纤维垫	N.D.	N.D.	N.D.	N.D.	P
12	黄色塑料膜	N.D.	N.D.	N.D.	N.D.	P
13	金属盘头螺丝银色镀层	—	—	—	—	—
14	金属盘头螺丝银色基材	—	—	—	—	—
15	银色金属圈	—	—	—	—	—
16	金属螺丝银色镀层	—	—	—	—	—
17	金属螺丝银色基材	—	—	—	—	—
18	白色塑料集风嘴	N.D.	N.D.	N.D.	N.D.	P
19	黑色塑料内壳	N.D.	N.D.	N.D.	N.D.	P
20	黑色塑料支架	N.D.	N.D.	N.D.	N.D.	P
21	金属螺丝黑色镀层	—	—	—	—	—
22	金属螺丝银色基材	—	—	—	—	—

## 检测结果及判定

序号	检测单元名称	确证检测结果				判定
		邻苯二甲酸二(2-乙基己基酯) (DEHP)	邻苯二甲酸二丁苄酯 (BBP)	邻苯二甲酸二丁酯 (DBP)	邻苯二甲酸二异丁酯 (DIBP)	
23	黑色塑料固定架	N.D.	N.D.	N.D.	N.D.	P
24	银灰色塑料散热片	N.D.	N.D.	N.D.	N.D.	P
25	金色金属触片	—	—	—	—	—
26	黑色塑料支架	N.D.	N.D.	N.D.	N.D.	P
27	银色金属触点	—	—	—	—	—
28	金色金属铆钉	—	—	—	—	—
29	铜色金属触片	—	—	—	—	—
30	红色玻封二极管	—	—	—	—	—
31	黑色塑料固定架	N.D.	N.D.	N.D.	N.D.	P
32	银色金属加热丝	—	—	—	—	—
33	银色金属熔断电阻	—	—	—	—	—
34	银色金属外壳	—	—	—	—	—
35	黑色塑料绕线架	N.D.	N.D.	N.D.	N.D.	P
36	漆包线	—	—	—	—	—
37	透明灌密封胶	N.D.	N.D.	N.D.	N.D.	P
38	银色金属轴	—	—	—	—	—
39	银色磁铁	—	—	—	—	—
40	银色金属叶轮	—	—	—	—	—
41	PCB 板基材	N.D.	N.D.	N.D.	N.D.	P
42	银色金属焊锡	—	—	—	—	—
43	白色塑料插座	N.D.	N.D.	N.D.	N.D.	P
44	白色橡胶外壳	N.D.	N.D.	N.D.	N.D.	P
45	塑料盖白色涂层	N.D.	N.D.	N.D.	N.D.	P

## 检测结果及判定

序号	检测单元名称	确证检测结果				判定
		邻苯二甲酸二(2-乙基己基酯) (DEHP)	邻苯二甲酸二丁苄酯 (BBP)	邻苯二甲酸二丁酯 (DBP)	邻苯二甲酸二异丁酯 (DIBP)	
46	塑料盖米色基材	N.D.	N.D.	N.D.	N.D.	P
47	PCB 板基材	N.D.	N.D.	N.D.	N.D.	P
48	银色金属焊锡	—	—	—	—	—
49	贴片电容	N.D.	N.D.	N.D.	N.D.	P
50	贴片电阻	N.D.	N.D.	N.D.	N.D.	P
51	贴片三极管	N.D.	N.D.	N.D.	N.D.	P
52	黑色芯片	N.D.	N.D.	N.D.	N.D.	P
53	米黄色塑料插座	N.D.	N.D.	N.D.	N.D.	P
54	白色灌封胶	N.D.	N.D.	N.D.	N.D.	P
55	透明 LED 灯	N.D.	N.D.	N.D.	N.D.	P
56	黄色 LED 灯	N.D.	N.D.	N.D.	N.D.	P
57	黑色海绵垫	N.D.	N.D.	N.D.	N.D.	P
58	白色塑料划片	N.D.	N.D.	N.D.	N.D.	P
59	塑料按钮白色涂层	N.D.	N.D.	N.D.	N.D.	P
60	塑料按钮米色基材	N.D.	N.D.	N.D.	N.D.	P
61	PCB 板基材	N.D.	N.D.	N.D.	N.D.	P
62	银色金属焊锡	—	—	—	—	—
63	黑色塑料底座	N.D.	N.D.	N.D.	N.D.	P
64	银色金属支架	—	—	—	—	—
65	金色金属按钮	—	—	—	—	—
66	银色金属振片	—	—	—	—	—
67	黄色塑料膜	N.D.	N.D.	N.D.	N.D.	P
68	米黄色塑料插座	N.D.	N.D.	N.D.	N.D.	P

## 检测结果及判定

序号	检测单元名称	确证检测结果				判定
		邻苯二甲酸二(2-乙基己基酯) (DEHP)	邻苯二甲酸二丁苄酯 (BBP)	邻苯二甲酸二丁酯 (DBP)	邻苯二甲酸二异丁酯 (DIBP)	
69	黑色塑料外壳	N.D.	N.D.	N.D.	N.D.	P
70	黑色塑料开关滑块	N.D.	N.D.	N.D.	N.D.	P
71	银色金属焊锡	—	—	—	—	—
72	铜色金属触片	—	—	—	—	—
73	银色金属触点	—	—	—	—	—
74	银色金属钢珠	—	—	—	—	—
75	PCB 板基材	N.D.	N.D.	N.D.	N.D.	P
76	银色金属焊锡	—	—	—	—	—
77	贴片电容	N.D.	N.D.	N.D.	N.D.	P
78	贴片电阻	N.D.	N.D.	N.D.	N.D.	P
79	贴片二极管	N.D.	N.D.	N.D.	N.D.	P
80	黑色芯片	N.D.	N.D.	N.D.	N.D.	P
81	黄色芯片	N.D.	N.D.	N.D.	N.D.	P
82	白色灌封胶	N.D.	N.D.	N.D.	N.D.	P
83	黑色陶瓷电容	—	—	—	—	—
84	蓝色陶瓷电容	—	—	—	—	—
85	电解电容黑色塑料外壳	N.D.	N.D.	N.D.	N.D.	P
86	银色铝壳	—	—	—	—	—
87	黄色电解纸	N.D.	N.D.	N.D.	N.D.	P
88	银色塑料膜	N.D.	N.D.	N.D.	N.D.	P
89	黑色橡胶塞	N.D.	N.D.	N.D.	N.D.	P
90	银色金属引脚	—	—	—	—	—
91	黑色电容	N.D.	N.D.	N.D.	N.D.	P

## 检测结果及判定

序号	检测单元名称	确证检测结果				判定
		邻苯二甲酸二(2-乙基己基酯) (DEHP)	邻苯二甲酸二丁苄酯 (BBP)	邻苯二甲酸二丁酯 (DBP)	邻苯二甲酸二异丁酯 (DIBP)	
92	银色金属固定片	—	—	—	—	—
93	安规电容黄色塑料外壳	N.D.	N.D.	N.D.	N.D.	P
94	黄色灌封胶	N.D.	N.D.	N.D.	N.D.	P
95	电感磁环绿色涂层	N.D.	N.D.	N.D.	N.D.	P
96	电感磁环黑色基材	—	—	—	—	—
97	漆包线	—	—	—	—	—
98	黑色塑料支架	N.D.	N.D.	N.D.	N.D.	P
99	发生器黑色塑料外壳	N.D.	N.D.	N.D.	N.D.	P
100	红色灌封胶	N.D.	N.D.	N.D.	N.D.	P
101	金属螺丝银色镀层	—	—	—	—	—
102	金属螺丝银色基材	—	—	—	—	—
103	白色橡胶外被	N.D.	N.D.	N.D.	N.D.	P
104	棕色橡胶外被	N.D.	N.D.	N.D.	N.D.	P
105	蓝色橡胶外被	N.D.	N.D.	N.D.	N.D.	P
106	红色橡胶外被	N.D.	N.D.	N.D.	N.D.	P
107	黄色橡胶外被	N.D.	N.D.	N.D.	N.D.	P
108	黑色橡胶外被	N.D.	N.D.	N.D.	N.D.	P
109	白色橡胶外被	N.D.	N.D.	N.D.	N.D.	P
110	蓝色橡胶外被	N.D.	N.D.	N.D.	N.D.	P
111	红色橡胶外被	N.D.	N.D.	N.D.	N.D.	P
112	黄色橡胶外被	N.D.	N.D.	N.D.	N.D.	P
113	银色金属丝	—	—	—	—	—
114	黑色橡胶管	N.D.	N.D.	N.D.	N.D.	P

## 检测结果及判定

序号	检测单元名称	确证检测结果				判定
		邻苯二甲酸二(2-乙基己基酯) (DEHP)	邻苯二甲酸二丁苄酯 (BBP)	邻苯二甲酸二丁酯 (DBP)	邻苯二甲酸二异丁酯 (DIBP)	
115	银色金属插头	—	—	—	—	—
116	白色塑料接插件	N.D.	N.D.	N.D.	N.D.	P
117	米黄色塑料插座	N.D.	N.D.	N.D.	N.D.	P
118	红色塑料插头	N.D.	N.D.	N.D.	N.D.	P
119	白色橡胶外壳	N.D.	N.D.	N.D.	N.D.	P
120	米黄色塑料内壳	N.D.	N.D.	N.D.	N.D.	P
121	米色塑料支架	N.D.	N.D.	N.D.	N.D.	P
122	银色金属插片	—	—	—	—	—
123	白色橡胶管	N.D.	N.D.	N.D.	N.D.	P
124	蓝色橡胶外被	N.D.	N.D.	N.D.	N.D.	P
125	灰色橡胶外被	N.D.	N.D.	N.D.	N.D.	P
126	铜导线	—	—	—	—	—
127	白色橡胶扎带	N.D.	N.D.	N.D.	N.D.	P
128	白色塑料护套	N.D.	N.D.	N.D.	N.D.	P
129	黑色塑料集风嘴	N.D.	N.D.	N.D.	N.D.	P
130	塑料壳体黑色涂层	N.D.	N.D.	N.D.	N.D.	P
131	黑色塑料把柄外壳	N.D.	N.D.	N.D.	N.D.	P
132	黑色塑料吸气罩	N.D.	N.D.	N.D.	N.D.	P
133	塑料盖黑色涂层	N.D.	N.D.	N.D.	N.D.	P
134	塑料按钮黑色涂层	N.D.	N.D.	N.D.	N.D.	P
135	黑色橡胶外壳	N.D.	N.D.	N.D.	N.D.	P
136	黑色橡胶管	N.D.	N.D.	N.D.	N.D.	P
137	黑色橡胶扎带	N.D.	N.D.	N.D.	N.D.	P

## 检测结果及判定

序号	检测单元名称	确证检测结果				判定
		邻苯二甲酸二(2-乙基己基酯) (DEHP)	邻苯二甲酸二丁苄酯 (BBP)	邻苯二甲酸二丁酯 (DBP)	邻苯二甲酸二异丁酯 (DIBP)	
138	粉色塑料集风嘴	N.D.	N.D.	N.D.	N.D.	P
139	塑料壳体粉色涂层	N.D.	N.D.	N.D.	N.D.	P
140	粉色塑料把柄外壳	N.D.	N.D.	N.D.	N.D.	P
141	粉色塑料吸气罩	N.D.	N.D.	N.D.	N.D.	P
142	塑料盖粉色涂层	N.D.	N.D.	N.D.	N.D.	P
143	塑料按钮粉色涂层	N.D.	N.D.	N.D.	N.D.	P
144	粉色橡胶外壳	N.D.	N.D.	N.D.	N.D.	P
145	粉色橡胶管	N.D.	N.D.	N.D.	N.D.	P
146	粉色橡胶扎带	N.D.	N.D.	N.D.	N.D.	P

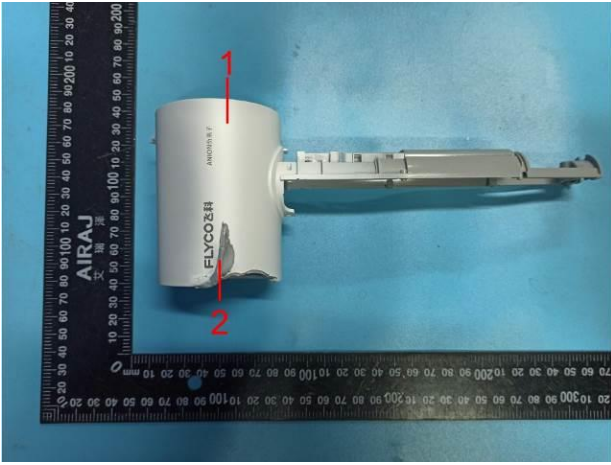
备注:

- 1) “P”表示“通过”, “F”表示“不通过”;
- 2) “N.D.”表示“未检出 (低于报告限)”, “/”表示“未检测”, “—”表示“不适用”;
- 3) 确证检测的限值和报告限见下表:

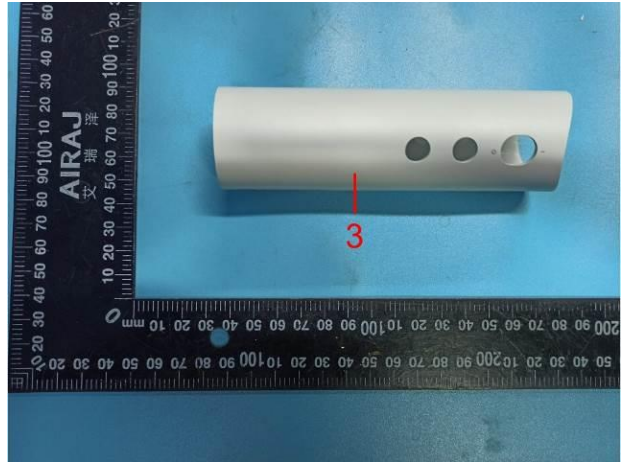
单位: mg/kg

检测物质	DEHP	BBP	DBP	DIBP
限值	1000	1000	1000	1000
报告限	10	10	10	10

# 组件/部件/元器件照片



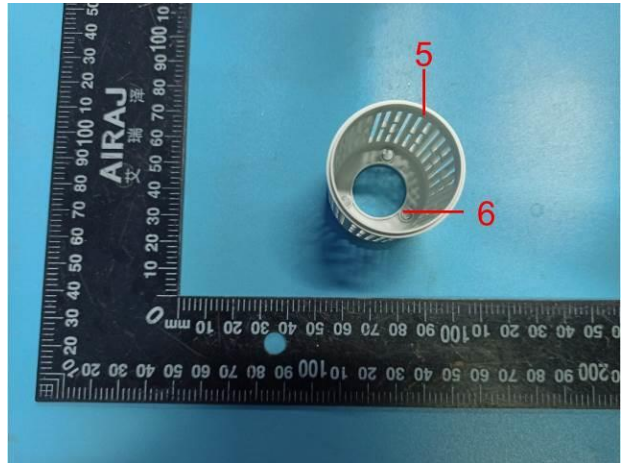
1~2



3



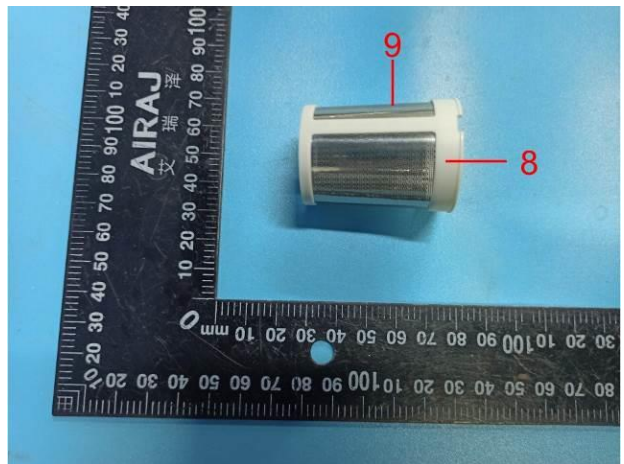
4



5~6

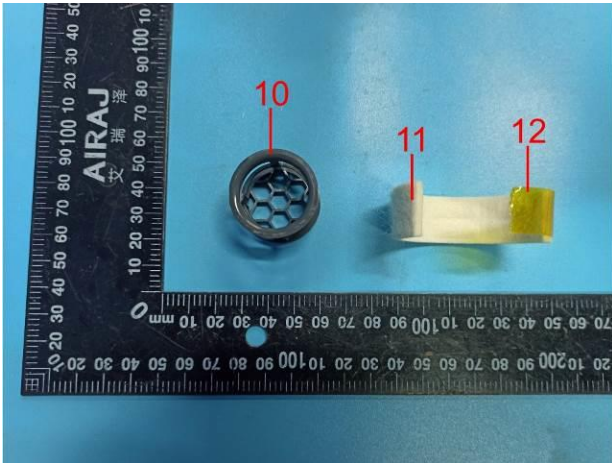


7



8~9

### 组件/部件/元器件照片



10~12



13~14



15



16~17

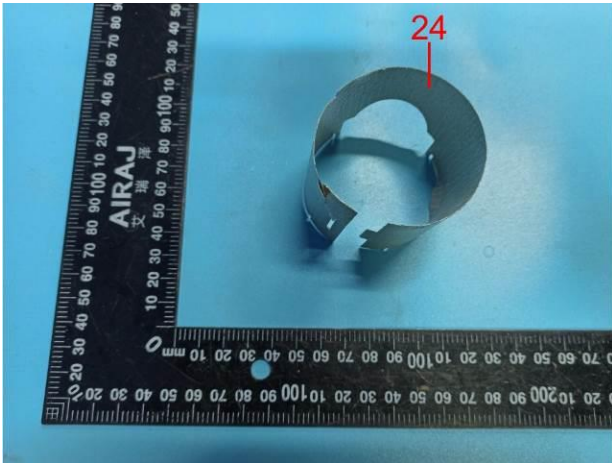


18~22

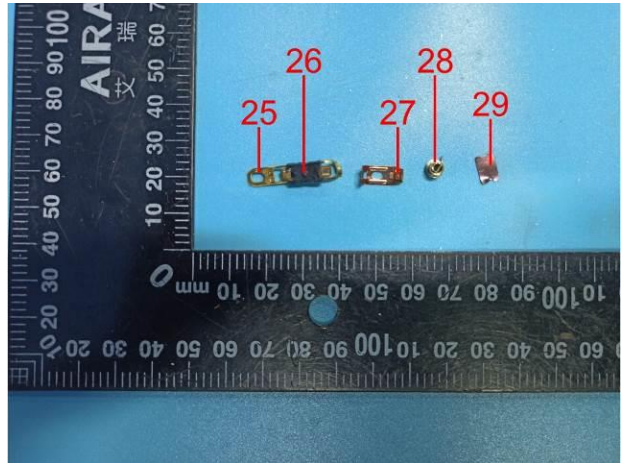


23

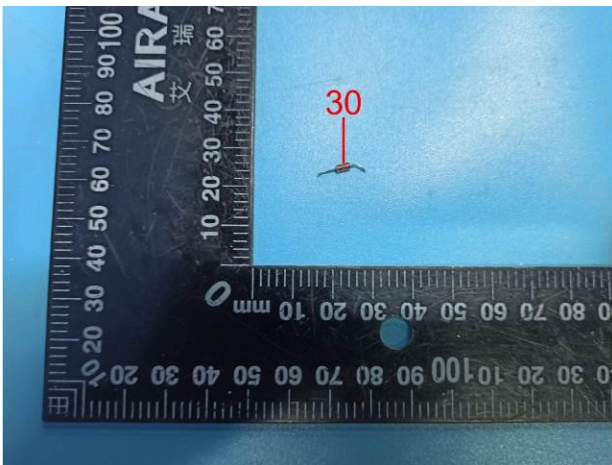
### 组件/部件/元器件照片



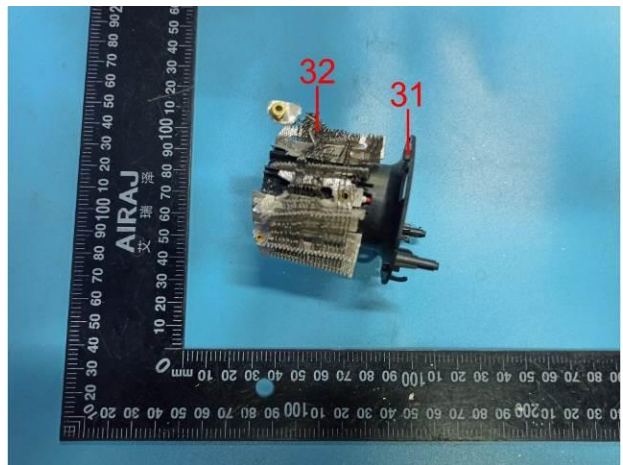
24



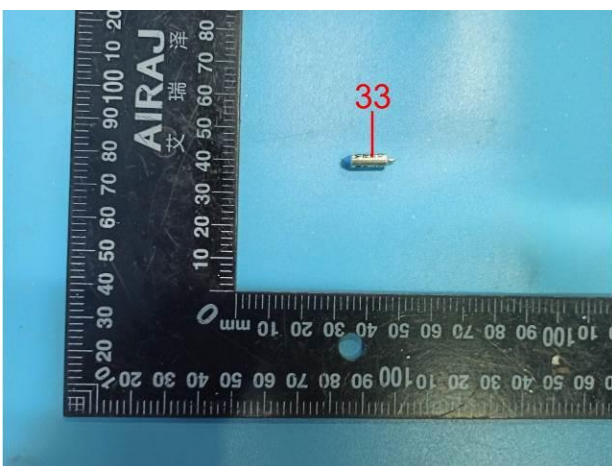
25~29



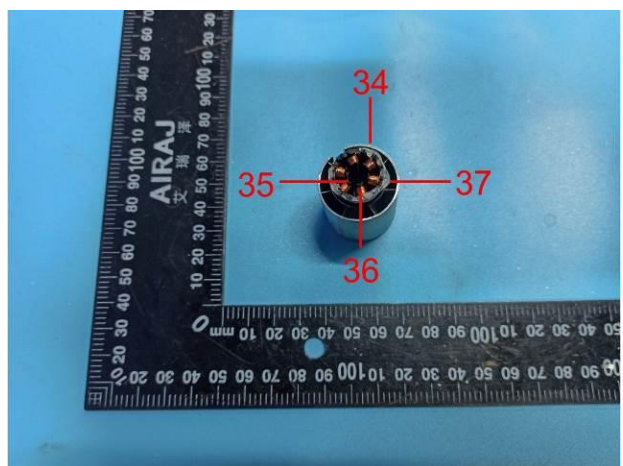
30



31~32

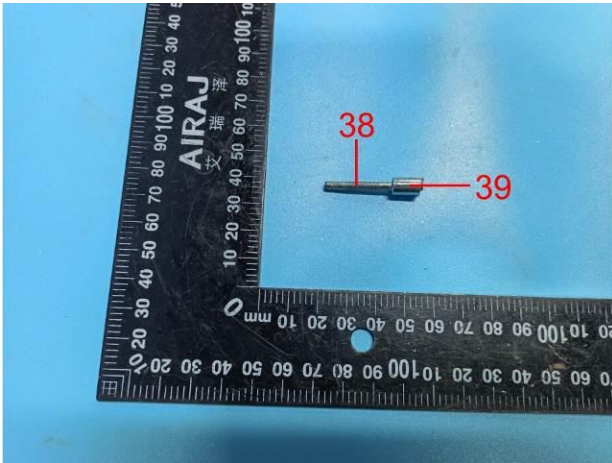


33

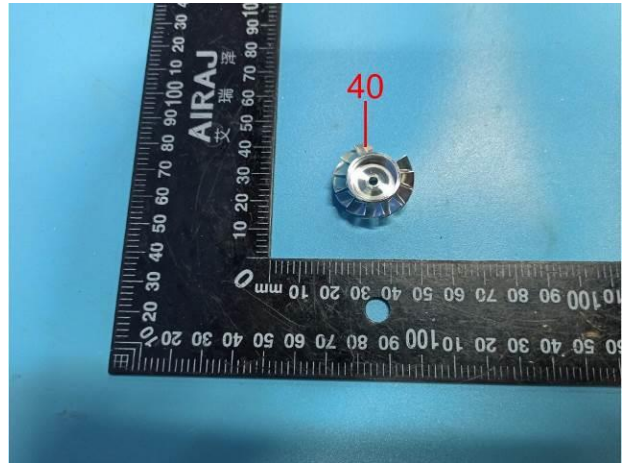


34~37

# 组件/部件/元器件照片



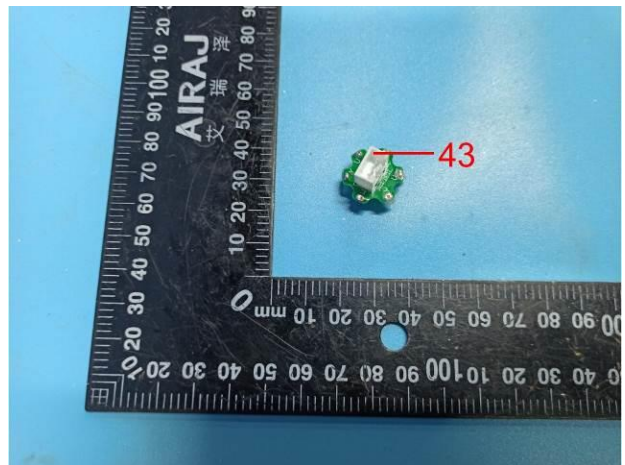
38~39



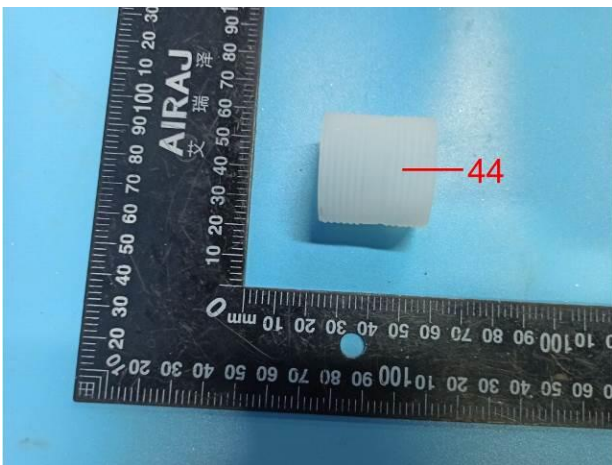
40



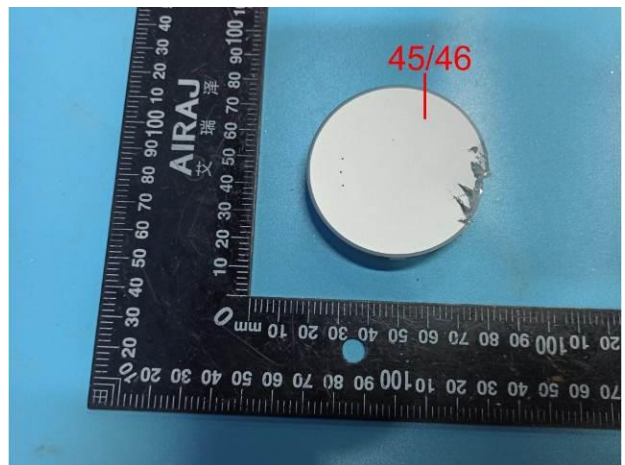
41~42



43

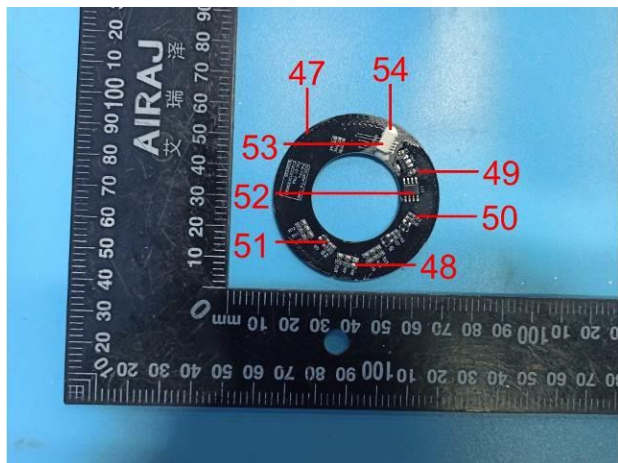


44

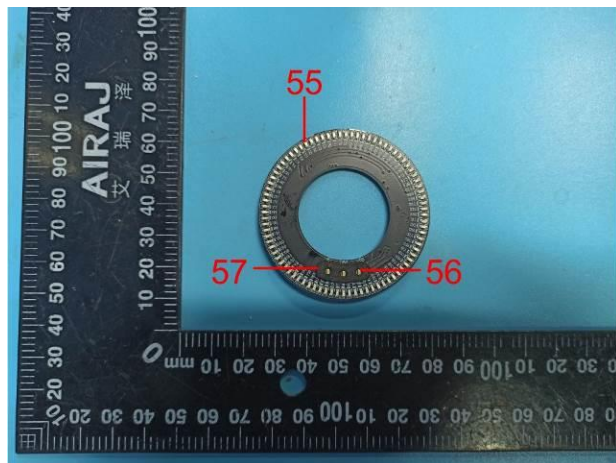


45~46

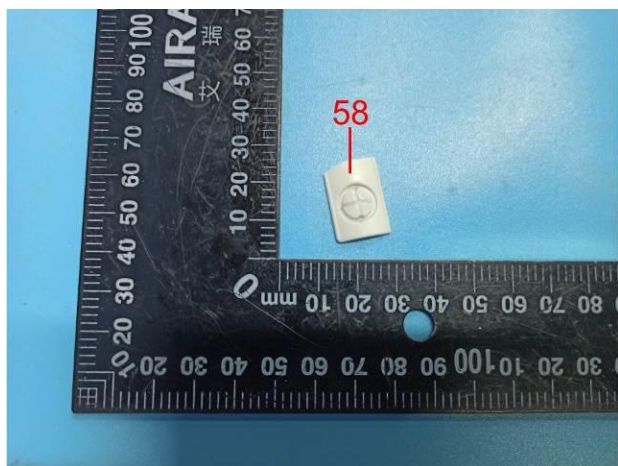
### 组件/部件/元器件照片



47~54



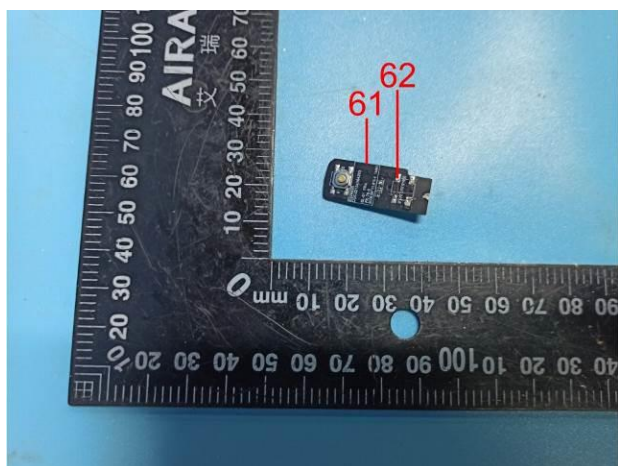
55~57



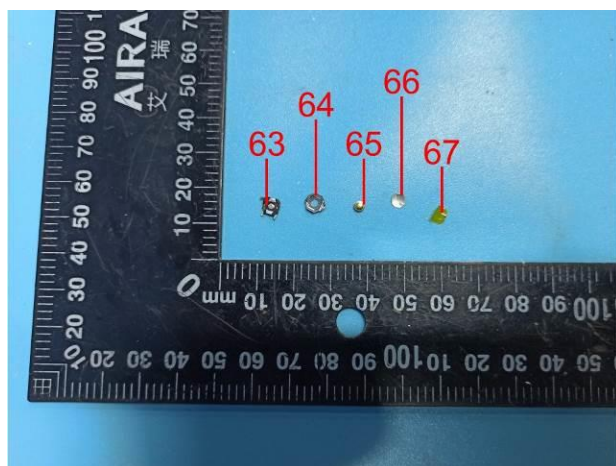
58



59~60



61~62

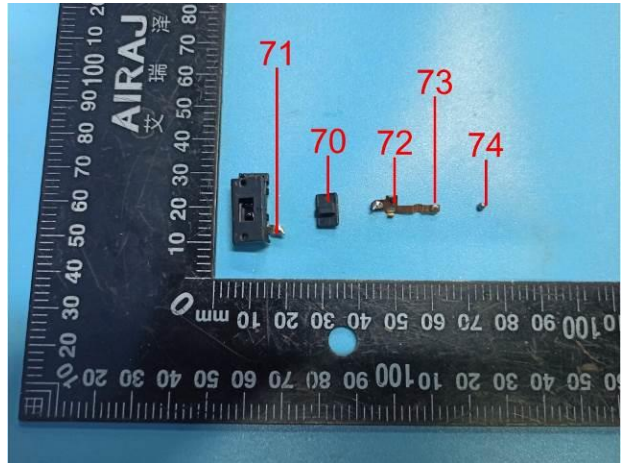


63~67

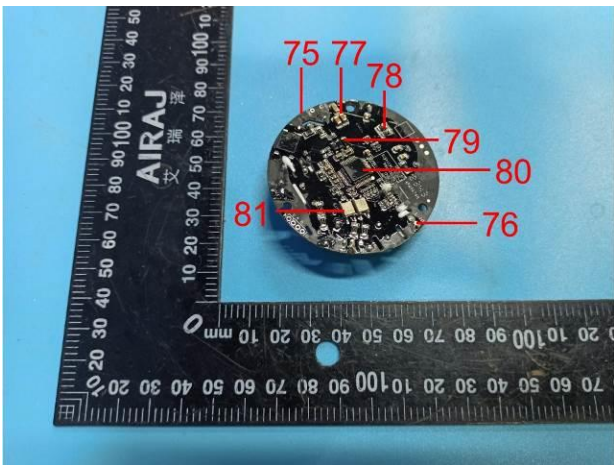
### 组件/部件/元器件照片



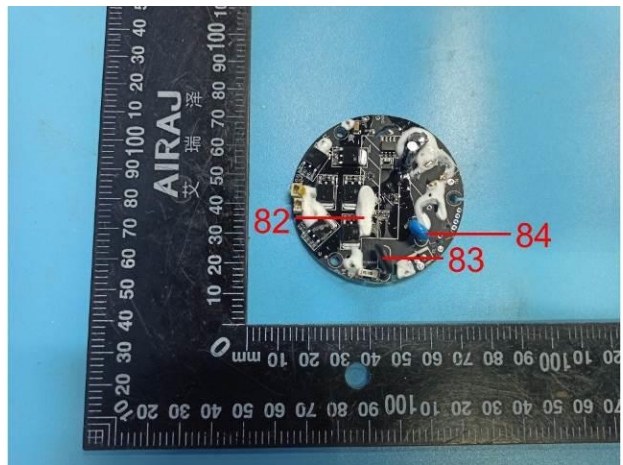
68~699



70~74



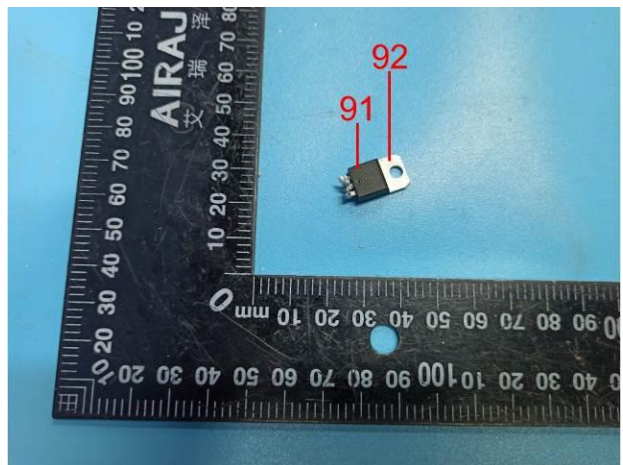
75~81



82~84

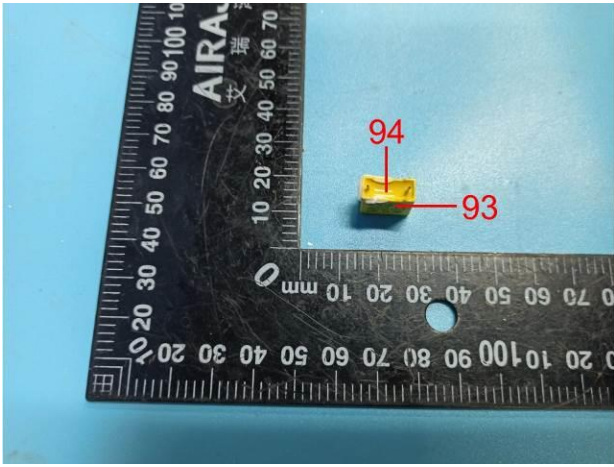


85~90

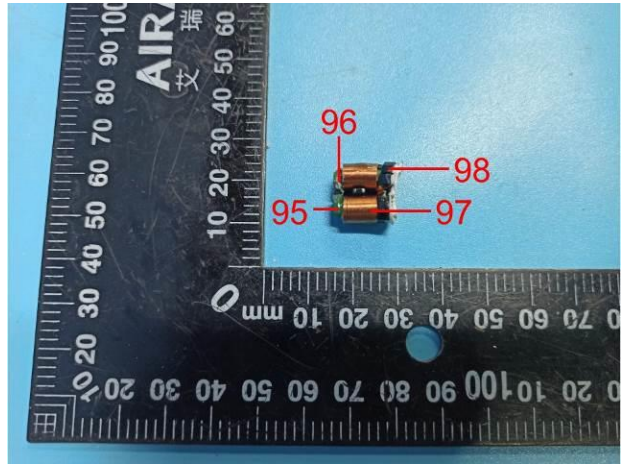


91~92

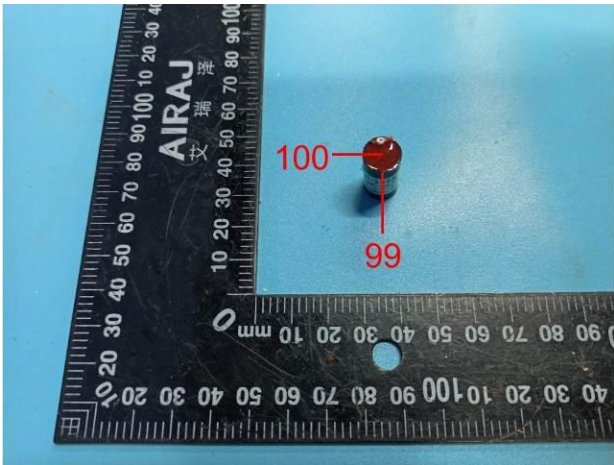
### 组件/部件/元器件照片



93~94



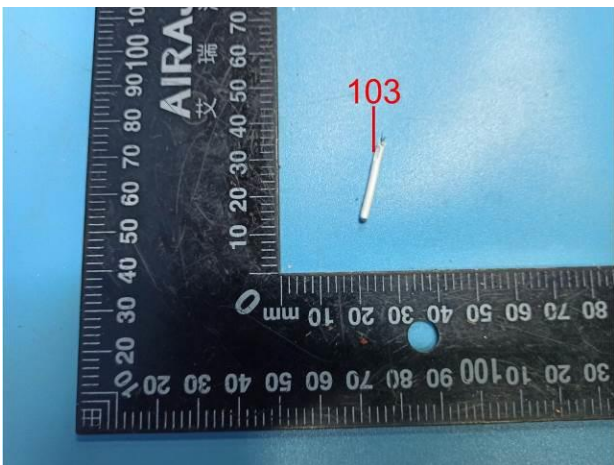
95~98



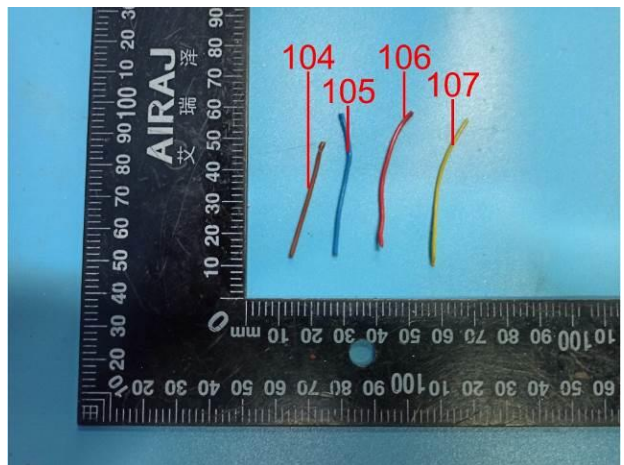
99~100



101~102

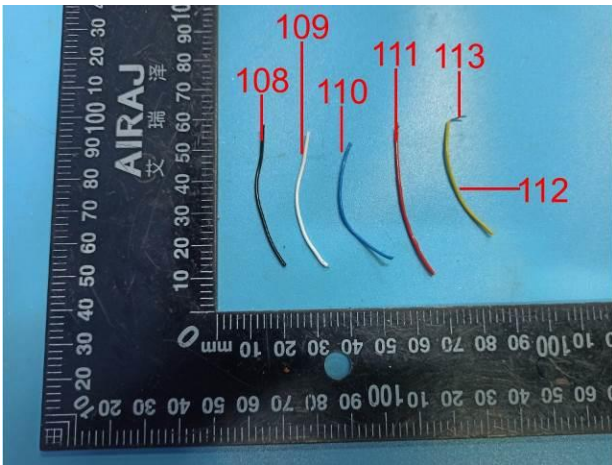


103

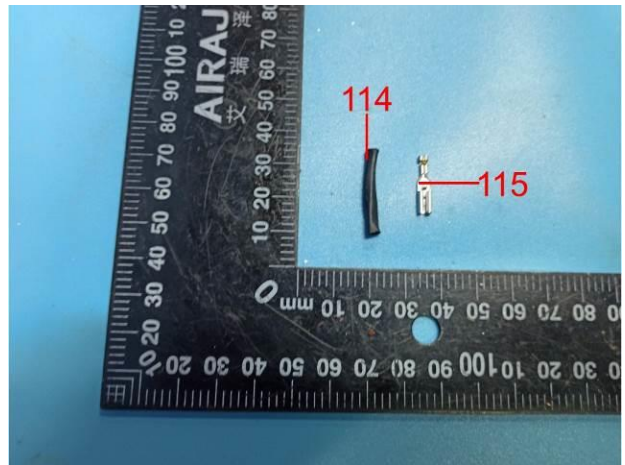


104~107

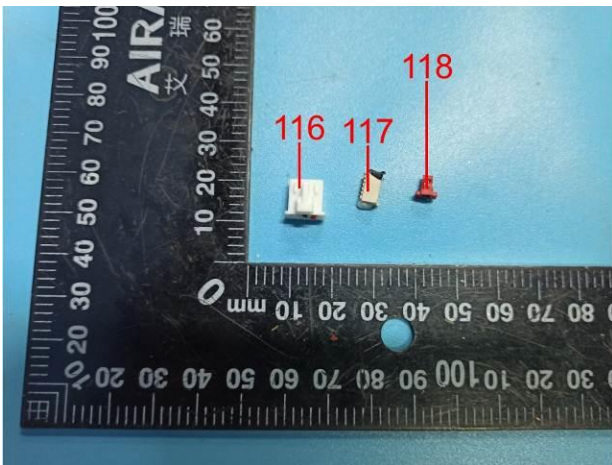
### 组件/部件/元器件照片



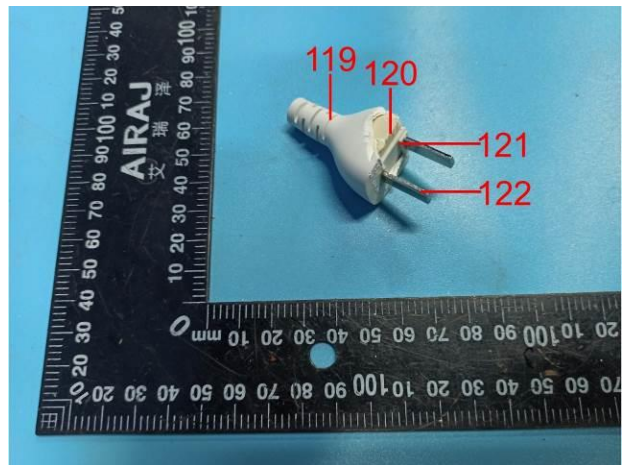
108~113



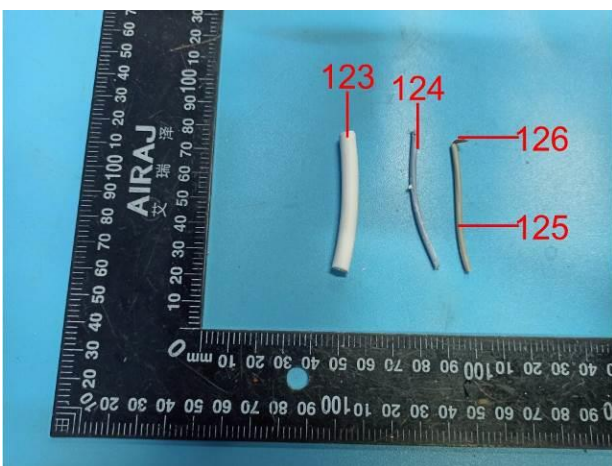
114~115



116~118



119~122

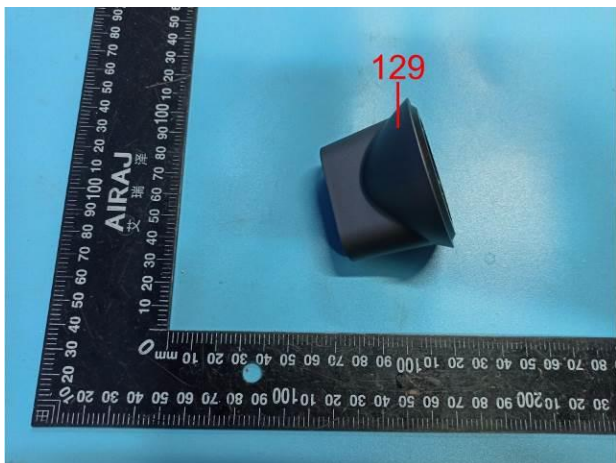


123~126



127~128

### 组件/部件/元器件照片



129



130~134

# 注意事项 Important

1. 报告无检测单位印章无效;

The test report is invalid without the official stamp of Lab.;

2. 未经本试验室书面同意, 不得部分地复制本报告;

Any part photocopies of the test report are forbidden without the written permission from Lab.;

3. 报告无送检、审核、批准人签名无效;

The test report is invalid without the signatures of Author and Reviewer;

4. 报告涂改无效;

The test report is invalid if altered;

5. 对检测报告若有异议, 请于收到报告之日起十五天内向检测单位提出;

Objections to the test report must be submitted to Lab. within 15 days;

6. 一般情况, 委托检测结果适用于收到的样品。样品信息由客户提供, 实验室对此真实性不承担责任;

Generally, commission test results apply to the samples as received. The sample information is provided by the customer and the laboratory is not responsible for its a u t h e n t i c i t y ;

7. 检测结果中“—”或“N”表示“不适用”, “/”表示“未检测”, “P”表示“通过”或“合格”, “F”表示“不通过”或“不合格”。

As for the test result, “—” or “N” means “not applicable”, “/” means “not testing”, “P” means “pass” and “F” means “fail”.

*\*\*报告中未加 CMA 标志时, 检测数据和结果仅供科研、教学或内部质量控制之用。 \*\**

*\*\*Test data and results of the report without CMA mark will only be used for scientific research, teaching or internal quality control. \*\**

测试地址: 中国 浙江省嘉兴市南湖区嘉兴总部商务花园 3 号楼

Testing location: Building 3, Jiaxing Advanced Business Park, Nanhu District, Jiaxing, Zhejiang, China

电 话(Tel): 0573 82586881

传 真(FAX): 0573 82586875

邮政编码(Post Code): 314000

E-mail: [jxskb@cvc.org.cn](mailto:jxskb@cvc.org.cn)