



中国认可
国际互认
检测
TESTING
CNAS L5510

第 1 页 共 30 页

报告编号: CNRSJX2023-0062

检测报告

产品名称: 飞科电动冲牙器

委托单位: 上海飞科电器股份有限公司

检测类别: 委托检测

嘉兴威凯检测技术有限公司

样品描述及说明

样品照片:



CNRSJX2023-0062



FP7800 (蜜瓜橙)

覆盖型号: FP7800 (极光紫)



覆盖型号: FP7800 (天际蓝)



覆盖型号: FP7800 (水晶绿)

制 造 商: 上海飞科电器股份有限公司
 制造商地址: 上海市松江区广富林东路 555 号

生 产 厂: 东莞市茗创优尚电子科技有限公司
 生产厂地址: 广东省东莞市竹塘上下围工业路海永科技园 5-1 栋 6 楼

依据委托单位提供同材质声明, 以下覆盖型号中除差异部件外, 其他零部件的材质与主检型号 FP7800 (蜜瓜橙) 中零部件的材质一致。

覆盖型号: FP7800 (极光紫), FP7800 (天际蓝), FP7800 (水晶绿)

样品拆分清单					
序号	组件/部件/元器件		检测单元		备注
	编号	名称	编号	名称	
1	1	外壳	1-1	橙色塑料外壳	—
2			1-2	米黄色塑料盖板	—
3			1-3	橙色塑料内壳	—
4			1-4	橙色塑料外壳	—
5			1-5	橙色塑料底座	—
6			1-6	透明塑料内壳	—
7			1-7	白色塑料齿轮	—
8			1-8	银色金属轴	—
9			1-9	白色橡胶密封圈	—
10			1-10	橙色塑料按钮	—
11			1-11	橙色塑料盖板	—
12			1-12	橙色橡胶塞	—
13			1-13	橙色塑料支架	—
14			1-14	白色塑料支架	—
15			1-15	透明橡胶管	—
16			1-16	银色金属弹簧	—
17			1-17	白色塑料支架	—
18			1-18	黑色橡胶圈	—
19			1-19	黑色橡胶塞	—
20			1-20	黑色塑料插座	—
21			1-21	金属螺丝银色镀层	—
22			1-22	金属螺丝银色基材	—
23			1-23	白色塑料头	—
24			1-24	银色金属弹簧	—
25			1-25	透明塑料外壳	—
26			1-26	橙色塑料底座	—
27			1-27	透明塑料管	—
28			1-28	白色塑料支架	—

样品拆分清单					
序号	组件/部件/元器件		检测单元		备注
	编号	名称	编号	名称	
29	1	外壳	1-29	白色塑料刷毛	—
30			1-30	白色塑料出水头	—
31			1-31	塑料装饰条银色镀层	—
32			1-32	塑料装饰条白色基材	—
33	2	内部线束	2-1	蓝色橡胶外被	—
34			2-2	黑色橡胶外被	—
35			2-3	红色橡胶外被	—
36			2-4	银色金属导线	—
37	3	电机	3-1	银色金属外壳	—
38			3-2	黑色磁铁	—
39			3-3	银色金属轴	—
40			3-4	漆包线	—
41			3-5	银色金属硅钢片	—
42			3-6	黑色金属圈	—
43			3-7	银色金属焊锡	—
44			3-8	铜色金属换向器	—
45			3-9	白色塑料垫片	—
46			3-10	红色塑料垫片	—
47			3-11	白色塑料盖板	—
48			3-12	铜色金属轴套	—
49			3-13	白色塑料齿轮	—
50			3-14	铜色金属片	—
51			3-15	黑色金属块	—
52	4	主控板	4-1	PCB 板基材	—
53			4-2	银色金属焊锡	—
54			4-3	PCB 板基材	—
55			4-4	银色金属焊锡	—
56			4-5	黑色二极管	—

样品拆分清单					
序号	组件/部件/元器件		检测单元		备注
	编号	名称	编号	名称	
57	4	主控板	4-6	黑色芯片	—
58			4-7	贴片电阻	—
59			4-8	贴片电容	—
60			4-9	黑色三极管	—
61			4-10	黄色 LED 灯	—
62			4-11	黑色海绵块	—
63			4-12	银色金属盖板	—
64			4-13	铜色金属按钮	—
65			4-14	银色金属振片	—
66			4-15	黄色塑料膜	—
67			5	电池	5-1
68	5-2	黑色橡胶块			—
69	6	电源线	6-1	白色橡胶插头	—
70			6-2	银色金属插头	—
71			6-3	米色塑料内壳	—
72			6-4	白色塑料插片	—
73			6-5	金色金属针	—
74			6-6	白色橡胶插头	—
75			6-7	银色金属外壳	—
76			6-8	白色橡胶扎带	—
77			6-9	白色橡胶护线套	—
78			6-10	黄色橡胶外被	—
79			6-11	橙色橡胶外被	—
80			6-12	铜色金属导线	—
81	7	差异件, 型号: FP7800 (极光紫)	7-1	紫色塑料外壳	—
82			7-2	紫色塑料内壳	—
83			7-3	紫色塑料底座	—
84			7-4	紫色塑料按钮	—

样品拆分清单					
序号	组件/部件/元器件		检测单元		备注
	编号	名称	编号	名称	
85	7	差异件, 型号: FP7800 (极光紫)	7-5	紫色橡胶塞	—
86			7-6	紫色塑料盖板	—
87			7-7	紫色塑料底座	—
88	8	差异件, 型号: FP7800 (天际蓝)	8-1	蓝色塑料外壳	—
89			8-2	蓝色塑料内壳	—
90			8-3	蓝色塑料底座	—
91			8-4	蓝色塑料按钮	—
92			8-5	蓝色橡胶塞	—
93			8-6	蓝色塑料盖板	—
94			8-7	蓝色塑料底座	—
95	9	差异件, 型号: FP7800 (水晶绿)	9-1	绿色塑料外壳	—
96			9-2	绿色塑料内壳	—
97			9-3	绿色塑料底座	—
98			9-4	绿色塑料按钮	—
99			9-5	绿色橡胶塞	—
100			9-6	绿色塑料盖板	—
101			9-7	绿色塑料底座	—

检测结果及判定

序号	检测单元名称	筛选检测结果(mg/kg)						确证检测结果(mg/kg)							判定
		铅 (Pb)	镉 (Cd)	汞 (Hg)	总铬 (Cr)	总溴 (Br)	筛选判定	铅 (Pb)	镉 (Cd)	汞 (Hg)	六价铬 (Cr ⁶⁺)		多溴联苯 (PBBs)	多溴二苯醚 (PBDEs)	
											金属镀层	其他材料			
1	橙色塑料外壳	N.D.	N.D.	N.D.	N.D.	N.D.	P	/	/	/	/	/	/	/	P
2	米黄色塑料盖板	N.D.	N.D.	N.D.	N.D.	N.D.	P	/	/	/	/	/	/	/	P
3	橙色塑料内壳	N.D.	N.D.	N.D.	N.D.	N.D.	P	/	/	/	/	/	/	/	P
4	橙色塑料外壳	N.D.	N.D.	N.D.	N.D.	N.D.	P	/	/	/	/	/	/	/	P
5	橙色塑料底座	N.D.	N.D.	N.D.	N.D.	N.D.	P	/	/	/	/	/	/	/	P
6	透明塑料内壳	N.D.	N.D.	N.D.	N.D.	N.D.	P	/	/	/	/	/	/	/	P
7	白色塑料齿轮	N.D.	N.D.	N.D.	N.D.	N.D.	P	/	/	/	/	/	/	/	P
8	银色金属轴	N.D.	N.D.	N.D.	N.D.	—	P	/	/	/	/	/	/	/	P
9	白色橡胶密封圈	N.D.	N.D.	N.D.	N.D.	N.D.	P	/	/	/	/	/	/	/	P
10	橙色塑料按钮	N.D.	N.D.	N.D.	N.D.	N.D.	P	/	/	/	/	/	/	/	P
11	橙色塑料盖板	N.D.	N.D.	N.D.	N.D.	N.D.	P	/	/	/	/	/	/	/	P
12	橙色橡胶塞	N.D.	N.D.	N.D.	N.D.	N.D.	P	/	/	/	/	/	/	/	P
13	橙色塑料支架	N.D.	N.D.	N.D.	N.D.	N.D.	P	/	/	/	/	/	/	/	P
14	白色塑料支架	N.D.	N.D.	N.D.	N.D.	N.D.	P	/	/	/	/	/	/	/	P
15	透明橡胶管	N.D.	N.D.	N.D.	N.D.	N.D.	P	/	/	/	/	/	/	/	P
16	银色金属弹簧	N.D.	N.D.	N.D.	1.8 × 10 ⁵	—	V	/	/	/	/	N.D.	/	/	P
17	白色塑料支架	N.D.	N.D.	N.D.	N.D.	N.D.	P	/	/	/	/	/	/	/	P
18	黑色橡胶圈	N.D.	N.D.	N.D.	N.D.	N.D.	P	/	/	/	/	/	/	/	P

检测结果及判定

序号	检测单元名称	筛选检测结果(mg/kg)						确证检测结果(mg/kg)						判定	
		铅 (Pb)	镉 (Cd)	汞 (Hg)	总铬 (Cr)	总溴 (Br)	筛选判定	铅 (Pb)	镉 (Cd)	汞 (Hg)	六价铬 (Cr ⁶⁺)		多溴联苯 (PBBs)		多溴二苯醚 (PBDEs)
											金属镀层	其他材料			
19	黑色橡胶塞	N.D.	N.D.	N.D.	N.D.	N.D.	P	/	/	/	/	/	/	/	P
20	黑色塑料插座	N.D.	N.D.	N.D.	N.D.	N.D.	P	/	/	/	/	/	/	/	P
21	金属螺丝银色镀层	N.D.	N.D.	N.D.	/	—	V	/	/	/	阴性	/	/	/	P
22	金属螺丝银色基材	N.D.	N.D.	N.D.	N.D.	—	P	/	/	/	/	/	/	/	P
23	白色塑料头	N.D.	N.D.	N.D.	N.D.	N.D.	P	/	/	/	/	/	/	/	P
24	银色金属弹簧	N.D.	N.D.	N.D.	1.7 × 10 ⁵	—	V	/	/	/	/	N.D.	/	/	P
25	透明塑料外壳	N.D.	N.D.	N.D.	N.D.	N.D.	P	/	/	/	/	/	/	/	P
26	橙色塑料底座	N.D.	N.D.	N.D.	N.D.	N.D.	P	/	/	/	/	/	/	/	P
27	透明塑料管	N.D.	N.D.	N.D.	N.D.	N.D.	P	/	/	/	/	/	/	/	P
28	白色塑料支架	N.D.	N.D.	N.D.	N.D.	N.D.	P	/	/	/	/	/	/	/	P
29	白色塑料刷毛	N.D.	N.D.	N.D.	N.D.	N.D.	P	/	/	/	/	/	/	/	P
30	白色塑料出水头	N.D.	N.D.	N.D.	N.D.	N.D.	P	/	/	/	/	/	/	/	P
31	塑料装饰条银色镀层	N.D.	N.D.	N.D.	/	—	V	/	/	/	阴性	/	/	/	P
32	塑料装饰条白色基材	N.D.	N.D.	N.D.	N.D.	N.D.	P	/	/	/	/	/	/	/	P
33	蓝色橡胶外被	N.D.	N.D.	N.D.	N.D.	N.D.	P	/	/	/	/	/	/	/	P
34	黑色橡胶外被	N.D.	N.D.	N.D.	N.D.	N.D.	P	/	/	/	/	/	/	/	P
35	红色橡胶外被	N.D.	N.D.	N.D.	N.D.	N.D.	P	/	/	/	/	/	/	/	P
36	银色金属导线	N.D.	N.D.	N.D.	N.D.	—	P	/	/	/	/	/	/	/	P

检测结果及判定

序号	检测单元名称	筛选检测结果(mg/kg)						确证检测结果(mg/kg)							判定
		铅 (Pb)	镉 (Cd)	汞 (Hg)	总铬 (Cr)	总溴 (Br)	筛选判定	铅 (Pb)	镉 (Cd)	汞 (Hg)	六价铬 (Cr ⁶⁺)		多溴联苯 (PBBs)	多溴二苯醚 (PBDEs)	
											金属镀层	其他材料			
37	银色金属外壳	N.D.	N.D.	N.D.	N.D.	—	P	/	/	/	/	/	/	/	P
38	黑色磁铁	/	/	/	/	—	V	N.D.	N.D.	N.D.	/	N.D.	/	/	P
39	银色金属轴	N.D.	N.D.	N.D.	N.D.	—	P	/	/	/	/	/	/	/	P
40	漆包线	N.D.	N.D.	N.D.	N.D.	—	P	/	/	/	/	/	/	/	P
41	银色金属硅钢片	N.D.	N.D.	N.D.	N.D.	—	P	/	/	/	/	/	/	/	P
42	黑色金属圈	N.D.	N.D.	N.D.	N.D.	—	P	/	/	/	/	/	/	/	P
43	银色金属焊锡	N.D.	N.D.	N.D.	N.D.	—	P	/	/	/	/	/	/	/	P
44	铜色金属换向器	N.D.	N.D.	N.D.	N.D.	—	P	/	/	/	/	/	/	/	P
45	白色塑料垫片	N.D.	N.D.	N.D.	N.D.	N.D.	P	/	/	/	/	/	/	/	P
46	红色塑料垫片	N.D.	N.D.	N.D.	N.D.	N.D.	P	/	/	/	/	/	/	/	P
47	白色塑料盖板	N.D.	N.D.	N.D.	N.D.	N.D.	P	/	/	/	/	/	/	/	P
48	铜色金属轴套	N.D.	N.D.	N.D.	N.D.	—	P	/	/	/	/	/	/	/	P
49	白色塑料齿轮	N.D.	N.D.	N.D.	N.D.	N.D.	P	/	/	/	/	/	/	/	P
50	铜色金属片	N.D.	N.D.	N.D.	N.D.	—	P	/	/	/	/	/	/	/	P
51	黑色金属块	N.D.	N.D.	N.D.	N.D.	—	P	/	/	/	/	/	/	/	P
52	PCB 板基材	N.D.	N.D.	N.D.	N.D.	3.7 × 10 ⁴	V	/	/	/	/	/	N.D.	N.D.	P
53	银色金属焊锡	N.D.	N.D.	N.D.	N.D.	—	P	/	/	/	/	/	/	/	P
54	PCB 板基材	N.D.	N.D.	N.D.	N.D.	3313	V	/	/	/	/	/	N.D.	N.D.	P

检测结果及判定

序号	检测单元名称	筛选检测结果(mg/kg)						确证检测结果(mg/kg)							判定
		铅 (Pb)	镉 (Cd)	汞 (Hg)	总铬 (Cr)	总溴 (Br)	筛选判定	铅 (Pb)	镉 (Cd)	汞 (Hg)	六价铬 (Cr ⁶⁺)		多溴联苯 (PBBs)	多溴二苯醚 (PBDEs)	
											金属镀层	其他材料			
55	银色金属焊锡	N.D.	N.D.	N.D.	N.D.	—	P	/	/	/	/	/	/	/	P
56	黑色二极管	N.D.	N.D.	N.D.	N.D.	N.D.	P	/	/	/	/	/	/	/	P
57	黑色芯片	N.D.	N.D.	N.D.	N.D.	N.D.	P	/	/	/	/	/	/	/	P
58	贴片电阻	870	N.D.	N.D.	N.D.	N.D.	V	531	/	/	/	/	/	/	P
59	贴片电容	N.D.	N.D.	N.D.	N.D.	N.D.	P	/	/	/	/	/	/	/	P
60	黑色三极管	N.D.	N.D.	N.D.	N.D.	N.D.	P	/	/	/	/	/	/	/	P
61	黄色 LED 灯	N.D.	N.D.	N.D.	N.D.	N.D.	P	/	/	/	/	/	/	/	P
62	黑色海绵块	N.D.	N.D.	N.D.	N.D.	N.D.	P	/	/	/	/	/	/	/	P
63	银色金属盖板	N.D.	N.D.	N.D.	1.4 × 10 ⁵	—	V	/	/	/	/	N.D.	/	/	P
64	铜色金属按钮	N.D.	N.D.	N.D.	N.D.	—	P	/	/	/	/	/	/	/	P
65	银色金属振片	N.D.	N.D.	N.D.	N.D.	—	P	/	/	/	/	/	/	/	P
66	黄色塑料膜	N.D.	N.D.	N.D.	N.D.	N.D.	P	/	/	/	/	/	/	/	P
67	蓝色塑料外壳	N.D.	N.D.	N.D.	N.D.	N.D.	P	/	/	/	/	/	/	/	P
68	黑色橡胶块	N.D.	N.D.	N.D.	N.D.	N.D.	P	/	/	/	/	/	/	/	P
69	白色橡胶插头	N.D.	N.D.	N.D.	N.D.	N.D.	P	/	/	/	/	/	/	/	P
70	银色金属插头	N.D.	N.D.	N.D.	N.D.	—	P	/	/	/	/	/	/	/	P
71	米色塑料内壳	N.D.	N.D.	N.D.	N.D.	N.D.	P	/	/	/	/	/	/	/	P
72	白色塑料插片	N.D.	N.D.	N.D.	N.D.	2.2 × 10 ⁴	V	/	/	/	/	/	N.D.	N.D.	P

检测结果及判定

序号	检测单元名称	筛选检测结果(mg/kg)						确证检测结果(mg/kg)						判定	
		铅 (Pb)	镉 (Cd)	汞 (Hg)	总铬 (Cr)	总溴 (Br)	筛选判定	铅 (Pb)	镉 (Cd)	汞 (Hg)	六价铬 (Cr ⁶⁺)		多溴联苯 (PBBs)		多溴二苯醚 (PBDEs)
											金属镀层	其他材料			
73	金色金属针	N.D.	N.D.	N.D.	N.D.	—	P	/	/	/	/	/	/	/	P
74	白色橡胶插头	N.D.	N.D.	N.D.	N.D.	N.D.	P	/	/	/	/	/	/	/	P
75	银色金属外壳	N.D.	N.D.	N.D.	N.D.	—	P	/	/	/	/	/	/	/	P
76	白色橡胶扎带	N.D.	N.D.	N.D.	N.D.	N.D.	P	/	/	/	/	/	/	/	P
77	白色橡胶护线套	N.D.	N.D.	N.D.	N.D.	N.D.	P	/	/	/	/	/	/	/	P
78	黄色橡胶外被	N.D.	N.D.	N.D.	N.D.	N.D.	P	/	/	/	/	/	/	/	P
79	橙色橡胶外被	N.D.	N.D.	N.D.	N.D.	N.D.	P	/	/	/	/	/	/	/	P
80	铜色金属导线	N.D.	N.D.	N.D.	N.D.	—	P	/	/	/	/	/	/	/	P
81	紫色塑料外壳	N.D.	N.D.	N.D.	N.D.	N.D.	P	/	/	/	/	/	/	/	P
82	紫色塑料内壳	N.D.	N.D.	N.D.	N.D.	N.D.	P	/	/	/	/	/	/	/	P
83	紫色塑料底座	N.D.	N.D.	N.D.	N.D.	N.D.	P	/	/	/	/	/	/	/	P
84	紫色塑料按钮	N.D.	N.D.	N.D.	N.D.	N.D.	P	/	/	/	/	/	/	/	P
85	紫色橡胶塞	N.D.	N.D.	N.D.	N.D.	N.D.	P	/	/	/	/	/	/	/	P
86	紫色塑料盖板	N.D.	N.D.	N.D.	N.D.	N.D.	P	/	/	/	/	/	/	/	P
87	紫色塑料底座	N.D.	N.D.	N.D.	N.D.	N.D.	P	/	/	/	/	/	/	/	P
88	蓝色塑料外壳	N.D.	N.D.	N.D.	N.D.	N.D.	P	/	/	/	/	/	/	/	P
89	蓝色塑料内壳	N.D.	N.D.	N.D.	N.D.	N.D.	P	/	/	/	/	/	/	/	P
90	蓝色塑料底座	N.D.	N.D.	N.D.	N.D.	N.D.	P	/	/	/	/	/	/	/	P

检测结果及判定

序号	检测单元名称	筛选检测结果(mg/kg)						确证检测结果(mg/kg)						判定	
		铅 (Pb)	镉 (Cd)	汞 (Hg)	总铬 (Cr)	总溴 (Br)	筛选判定	铅 (Pb)	镉 (Cd)	汞 (Hg)	六价铬 (Cr ⁶⁺)		多溴联苯 (PBBs)		多溴二苯醚 (PBDEs)
											金属镀层	其他材料			
91	蓝色塑料按钮	N.D.	N.D.	N.D.	N.D.	N.D.	P	/	/	/	/	/	/	/	P
92	蓝色橡胶塞	N.D.	N.D.	N.D.	N.D.	N.D.	P	/	/	/	/	/	/	/	P
93	蓝色塑料盖板	N.D.	N.D.	N.D.	N.D.	N.D.	P	/	/	/	/	/	/	/	P
94	蓝色塑料底座	N.D.	N.D.	N.D.	N.D.	N.D.	P	/	/	/	/	/	/	/	P
95	绿色塑料外壳	N.D.	N.D.	N.D.	N.D.	N.D.	P	/	/	/	/	/	/	/	P
96	绿色塑料内壳	N.D.	N.D.	N.D.	N.D.	N.D.	P	/	/	/	/	/	/	/	P
97	绿色塑料底座	N.D.	N.D.	N.D.	N.D.	N.D.	P	/	/	/	/	/	/	/	P
98	绿色塑料按钮	N.D.	N.D.	N.D.	N.D.	N.D.	P	/	/	/	/	/	/	/	P
99	绿色橡胶塞	N.D.	N.D.	N.D.	N.D.	N.D.	P	/	/	/	/	/	/	/	P
100	绿色塑料盖板	N.D.	N.D.	N.D.	N.D.	N.D.	P	/	/	/	/	/	/	/	P
101	绿色塑料底座	N.D.	N.D.	N.D.	N.D.	N.D.	P	/	/	/	/	/	/	/	P

备注:

- 1) 对于 PBBs 和 PBDEs, 其筛选检测结果显示的是总 Br 含量, 对于 Cr⁶⁺, 其筛选检测结果显示的是总 Cr 含量;
- 2) “P”表示“通过”, “F”表示“不通过”, “V”表示“需进行确证检测”;
- 3) 筛选检测的限值范围见下表:

单位: mg/kg

检测物质	聚合物	金属材料	复合材料
Cd	P≤50<V<150≤F	P≤50<V<150≤F	P≤10<V<170≤F
Pb	P≤500<V<1500≤F	P≤500<V<1500≤F	P≤300<V<1700≤F
Hg	P≤500<V<1500≤F	P≤500<V<1500≤F	P≤300<V<1700≤F
Br	P≤200<V	—	P≤150<V
Cr	P≤500<V	P≤500<V	P≤300<V

- 4) “N.D.”表示“未检出 (低于报告限)”, “/”表示“未检测”, “—”表示“不适用”;
- 5) 筛选检测各检测物质的方法检出限见下表:

单位: mg/kg

检测物质	Cd	Pb	Hg	总 Br	总 Cr
报告限	10	10	10	10	10

- 6) 确证检测的限值和报告限见下表:

单位: mg/kg

检测物质	Cd	Pb	Hg	其他材料中的 Cr ⁶⁺	金属材料中的 Cr ⁶⁺	PBBs	PBDEs
限值	100	1000	1000	1000	见备注 7)	1000	1000
报告限	5	5	5	5		50	50

- 7) 金属材料中 Cr⁶⁺检测结果的表述为: 由表面积为 50cm²的样品所萃取出来的溶液中测得的六价铬的浓度小于 0.02 mg/kg 的, 判定为: 阴性, 表示不含有六价铬, 合格, 用“P”表示; 反之, 判定为: 阳性, 含有六价铬, 不合格, 用“F”表示。

检测结果及判定

序号	检测单元名称	确证检测结果				判定
		邻苯二甲酸二(2-乙基己基酯) (DEHP)	邻苯二甲酸二丁苄酯 (BBP)	邻苯二甲酸二丁酯 (DBP)	邻苯二甲酸二异丁酯 (DIBP)	
1	橙色塑料外壳	N.D.	N.D.	N.D.	N.D.	P
2	米黄色塑料盖板	N.D.	N.D.	N.D.	N.D.	P
3	橙色塑料内壳	N.D.	N.D.	N.D.	N.D.	P
4	橙色塑料外壳	N.D.	N.D.	N.D.	N.D.	P
5	橙色塑料底座	N.D.	N.D.	N.D.	N.D.	P
6	透明塑料内壳	N.D.	N.D.	N.D.	N.D.	P
7	白色塑料齿轮	N.D.	N.D.	N.D.	N.D.	P
8	银色金属轴	—	—	—	—	—
9	白色橡胶密封圈	N.D.	N.D.	N.D.	N.D.	P
10	橙色塑料按钮	N.D.	N.D.	N.D.	N.D.	P
11	橙色塑料盖板	N.D.	N.D.	N.D.	N.D.	P
12	橙色橡胶塞	N.D.	N.D.	N.D.	N.D.	P
13	橙色塑料支架	N.D.	N.D.	N.D.	N.D.	P
14	白色塑料支架	N.D.	N.D.	N.D.	N.D.	P
15	透明橡胶管	N.D.	N.D.	N.D.	N.D.	P
16	银色金属弹簧	—	—	—	—	—
17	白色塑料支架	N.D.	N.D.	N.D.	N.D.	P
18	黑色橡胶圈	N.D.	N.D.	N.D.	N.D.	P
19	黑色橡胶塞	N.D.	N.D.	N.D.	N.D.	P
20	黑色塑料插座	N.D.	N.D.	N.D.	N.D.	P

检测结果及判定

序号	检测单元名称	确证检测结果				判定
		邻苯二甲酸二(2-乙基己基酯) (DEHP)	邻苯二甲酸二丁苄酯 (BBP)	邻苯二甲酸二丁酯 (DBP)	邻苯二甲酸二异丁酯 (DIBP)	
21	金属螺丝银色镀层	—	—	—	—	—
22	金属螺丝银色基材	—	—	—	—	—
23	白色塑料头	N.D.	N.D.	N.D.	N.D.	P
24	银色金属弹簧	—	—	—	—	—
25	透明塑料外壳	N.D.	N.D.	N.D.	N.D.	P
26	橙色塑料底座	N.D.	N.D.	N.D.	N.D.	P
27	透明塑料管	N.D.	N.D.	N.D.	N.D.	P
28	白色塑料支架	N.D.	N.D.	N.D.	N.D.	P
29	白色塑料刷毛	N.D.	N.D.	N.D.	N.D.	P
30	白色塑料出水头	N.D.	N.D.	N.D.	N.D.	P
31	塑料装饰条银色镀层	—	—	—	—	—
32	塑料装饰条白色基材	N.D.	N.D.	N.D.	N.D.	P
33	蓝色橡胶外被	N.D.	N.D.	N.D.	N.D.	P
34	黑色橡胶外被	N.D.	N.D.	N.D.	N.D.	P
35	红色橡胶外被	N.D.	N.D.	N.D.	N.D.	P
36	银色金属导线	—	—	—	—	—
37	银色金属外壳	—	—	—	—	—
38	黑色磁铁	—	—	—	—	—
39	银色金属轴	—	—	—	—	—
40	漆包线	—	—	—	—	—
41	银色金属硅钢片	—	—	—	—	—

检测结果及判定

序号	检测单元名称	确证检测结果				判定
		邻苯二甲酸二(2-乙基己基酯) (DEHP)	邻苯二甲酸二丁苄酯 (BBP)	邻苯二甲酸二丁酯 (DBP)	邻苯二甲酸二异丁酯 (DIBP)	
42	黑色金属圈	—	—	—	—	—
43	银色金属焊锡	—	—	—	—	—
44	铜色金属换向器	—	—	—	—	—
45	白色塑料垫片	N.D.	N.D.	N.D.	N.D.	P
46	红色塑料垫片	N.D.	N.D.	N.D.	N.D.	P
47	白色塑料盖板	N.D.	N.D.	N.D.	N.D.	P
48	铜色金属轴套	—	—	—	—	—
49	白色塑料齿轮	N.D.	N.D.	N.D.	N.D.	P
50	铜色金属片	—	—	—	—	—
51	黑色金属块	—	—	—	—	—
52	PCB 板基材	N.D.	N.D.	N.D.	N.D.	P
53	银色金属焊锡	—	—	—	—	—
54	PCB 板基材	N.D.	N.D.	N.D.	N.D.	P
55	银色金属焊锡	—	—	—	—	—
56	黑色二极管	N.D.	N.D.	N.D.	N.D.	P
57	黑色芯片	N.D.	N.D.	N.D.	N.D.	P
58	贴片电阻	N.D.	N.D.	N.D.	N.D.	P
59	贴片电容	N.D.	N.D.	N.D.	N.D.	P
60	黑色三极管	N.D.	N.D.	N.D.	N.D.	P
61	黄色 LED 灯	N.D.	N.D.	N.D.	N.D.	P
62	黑色海绵块	N.D.	N.D.	N.D.	N.D.	P

检测结果及判定

序号	检测单元名称	确证检测结果				判定
		邻苯二甲酸二(2-乙基己基酯) (DEHP)	邻苯二甲酸二丁苄酯 (BBP)	邻苯二甲酸二丁酯 (DBP)	邻苯二甲酸二异丁酯 (DIBP)	
63	银色金属盖板	—	—	—	—	—
64	铜色金属按钮	—	—	—	—	—
65	银色金属振片	—	—	—	—	—
66	黄色塑料膜	N.D.	N.D.	N.D.	N.D.	P
67	蓝色塑料外壳	N.D.	N.D.	N.D.	N.D.	P
68	黑色橡胶块	N.D.	N.D.	N.D.	N.D.	P
69	白色橡胶插头	N.D.	N.D.	N.D.	N.D.	P
70	银色金属插头	—	—	—	—	—
71	米色塑料内壳	N.D.	N.D.	N.D.	N.D.	P
72	白色塑料插片	N.D.	N.D.	N.D.	N.D.	P
73	金色金属针	—	—	—	—	—
74	白色橡胶插头	N.D.	N.D.	N.D.	N.D.	P
75	银色金属外壳	—	—	—	—	—
76	白色橡胶扎带	N.D.	N.D.	N.D.	N.D.	P
77	白色橡胶护线套	N.D.	N.D.	N.D.	N.D.	P
78	黄色橡胶外被	N.D.	N.D.	N.D.	N.D.	P
79	橙色橡胶外被	N.D.	N.D.	N.D.	N.D.	P
80	铜色金属导线	—	—	—	—	—
81	紫色塑料外壳	N.D.	N.D.	N.D.	N.D.	P
82	紫色塑料内壳	N.D.	N.D.	N.D.	N.D.	P
83	紫色塑料底座	N.D.	N.D.	N.D.	N.D.	P

检测结果及判定

序号	检测单元名称	确证检测结果				判定
		邻苯二甲酸二(2-乙基己基酯) (DEHP)	邻苯二甲酸二丁苄酯 (BBP)	邻苯二甲酸二丁酯 (DBP)	邻苯二甲酸二异丁酯 (DIBP)	
84	紫色塑料按钮	N.D.	N.D.	N.D.	N.D.	P
85	紫色橡胶塞	N.D.	N.D.	N.D.	N.D.	P
86	紫色塑料盖板	N.D.	N.D.	N.D.	N.D.	P
87	紫色塑料底座	N.D.	N.D.	N.D.	N.D.	P
88	蓝色塑料外壳	N.D.	N.D.	N.D.	N.D.	P
89	蓝色塑料内壳	N.D.	N.D.	N.D.	N.D.	P
90	蓝色塑料底座	N.D.	N.D.	N.D.	N.D.	P
91	蓝色塑料按钮	N.D.	N.D.	N.D.	N.D.	P
92	蓝色橡胶塞	N.D.	N.D.	N.D.	N.D.	P
93	蓝色塑料盖板	N.D.	N.D.	N.D.	N.D.	P
94	蓝色塑料底座	N.D.	N.D.	N.D.	N.D.	P
95	绿色塑料外壳	N.D.	N.D.	N.D.	N.D.	P
96	绿色塑料内壳	N.D.	N.D.	N.D.	N.D.	P
97	绿色塑料底座	N.D.	N.D.	N.D.	N.D.	P
98	绿色塑料按钮	N.D.	N.D.	N.D.	N.D.	P
99	绿色橡胶塞	N.D.	N.D.	N.D.	N.D.	P
100	绿色塑料盖板	N.D.	N.D.	N.D.	N.D.	P
101	绿色塑料底座	N.D.	N.D.	N.D.	N.D.	P

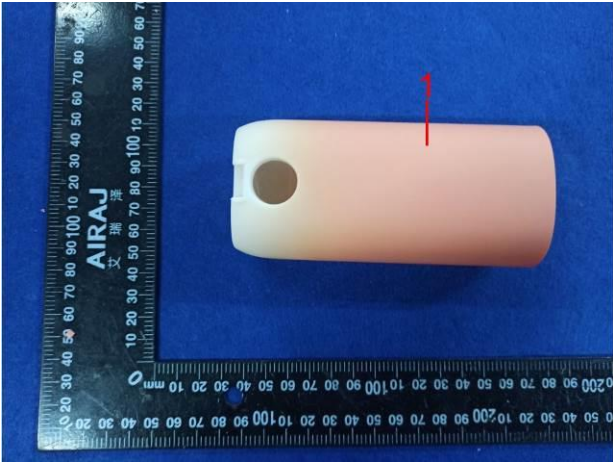
备注:

- 1) “P”表示“通过”, “F”表示“不通过”;
- 2) “N.D.”表示“未检出 (低于报告限)”, “/”表示“未检测”, “—”表示“不适用”;
- 3) 确证检测的限值和报告限见下表:

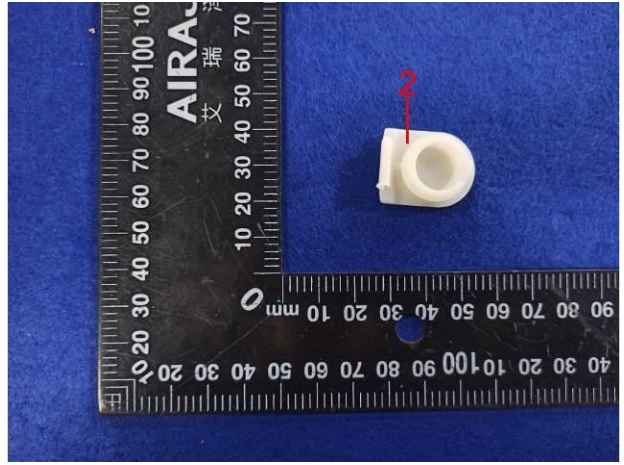
单位: mg/kg

检测物质	DEHP	BBP	DBP	DIBP
限值	1000	1000	1000	1000
报告限	10	10	10	10

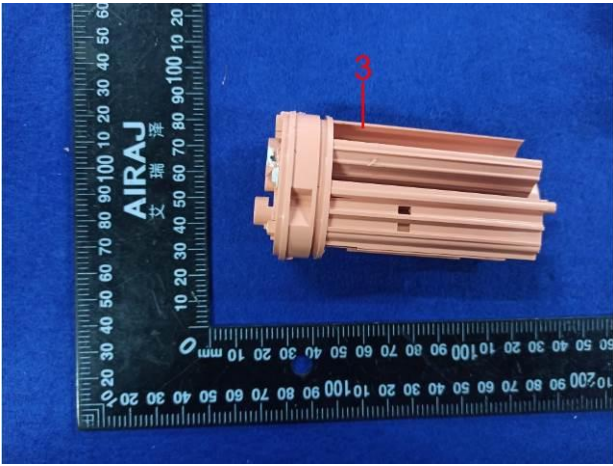
组件/部件/元器件照片



1



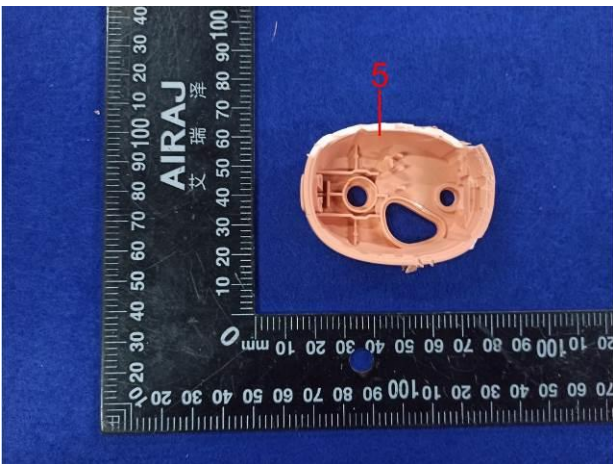
2



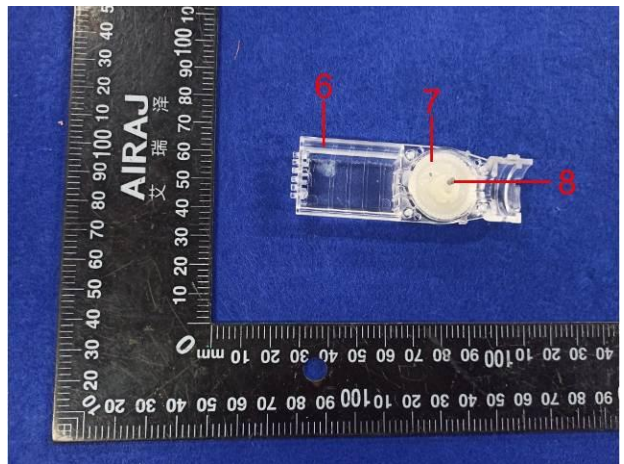
3



4

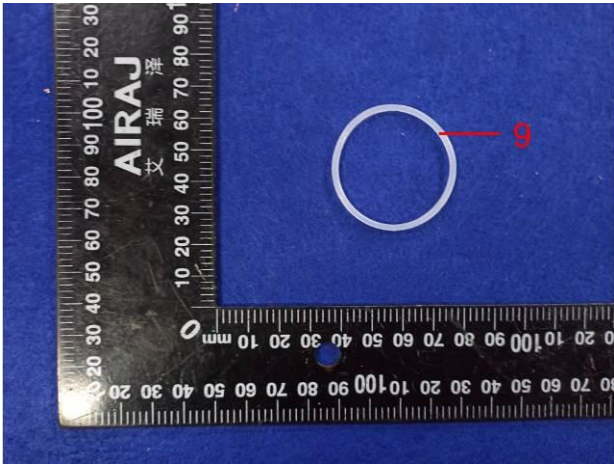


5

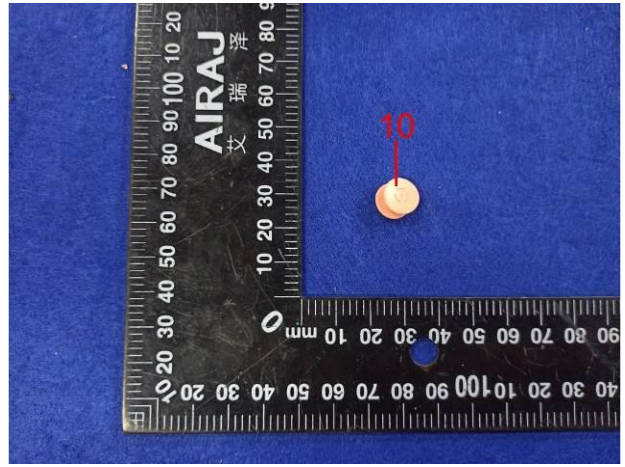


6~8

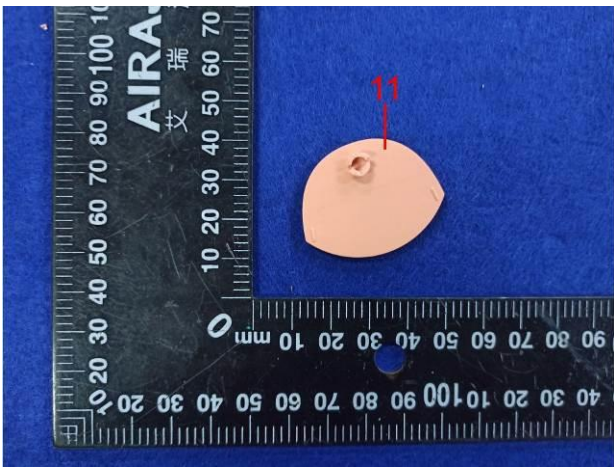
组件/部件/元器件照片



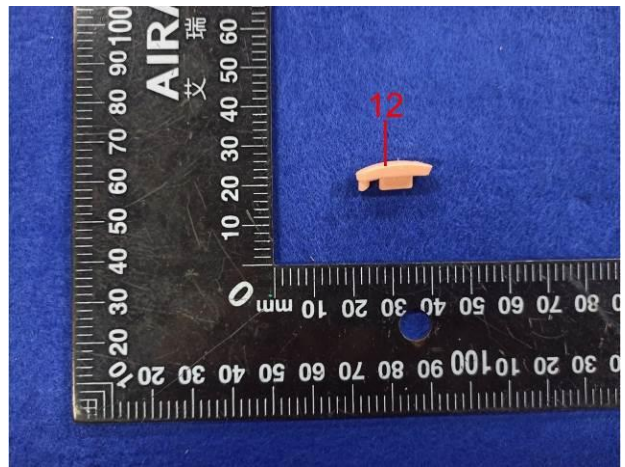
9



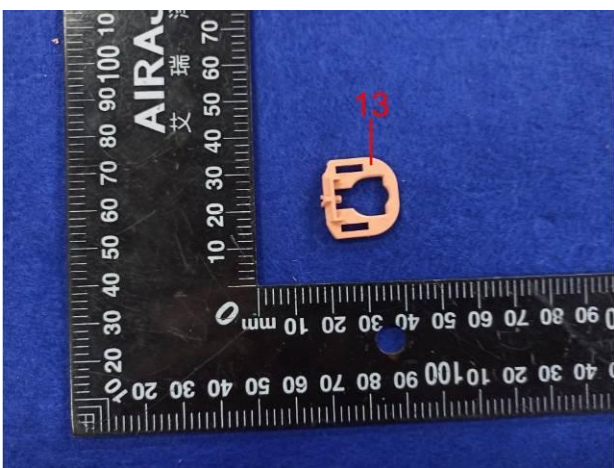
10



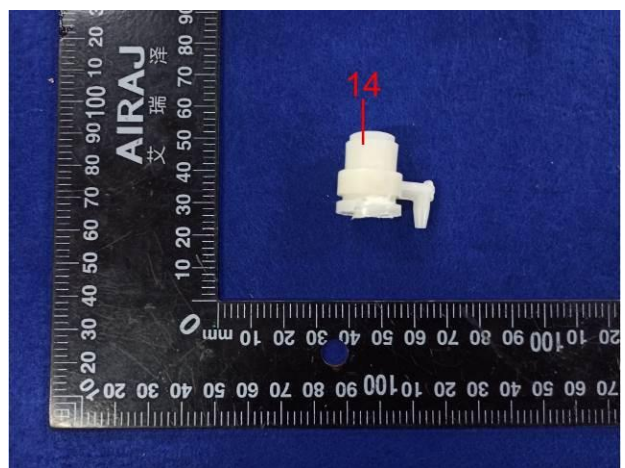
11



12

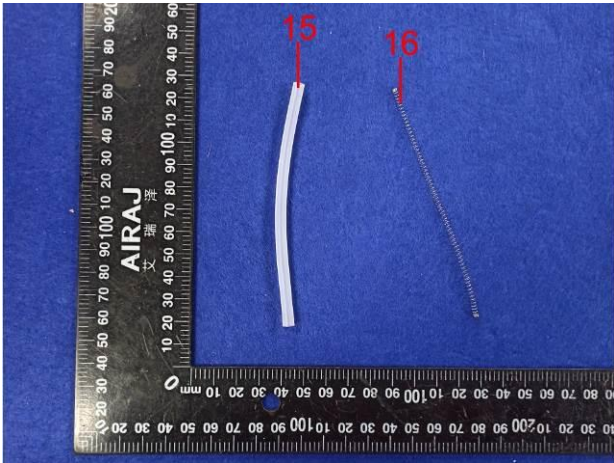


13

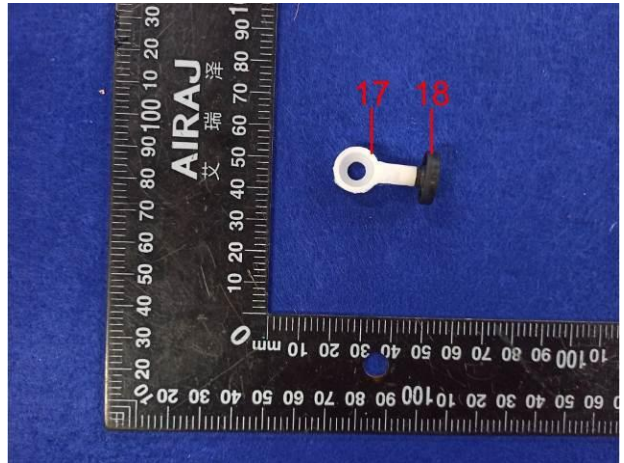


14

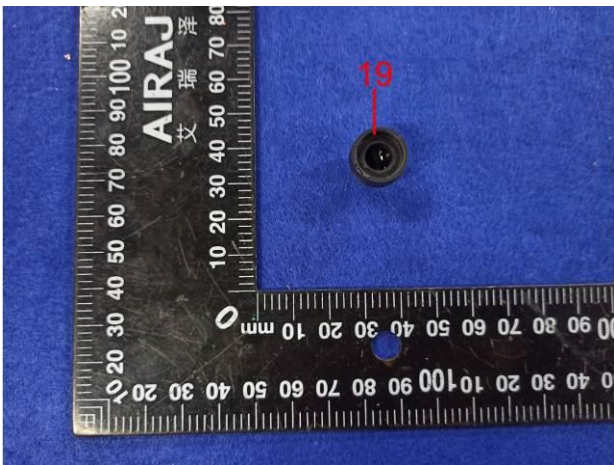
组件/部件/元器件照片



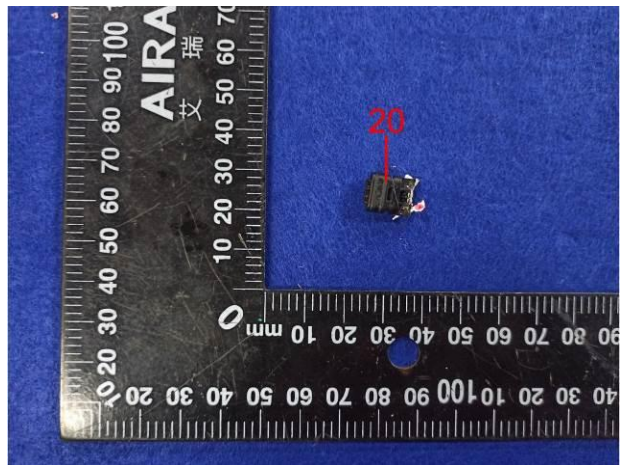
15~16



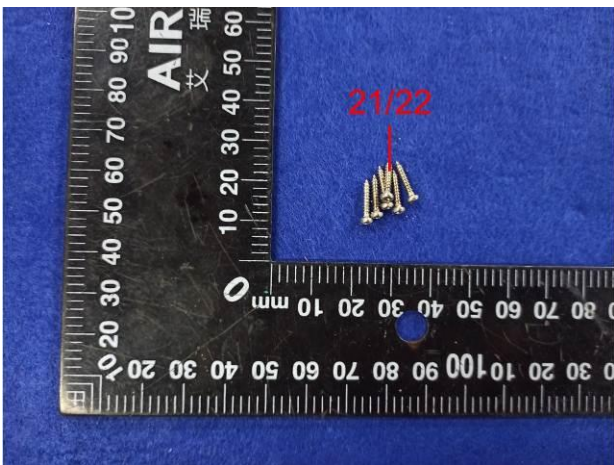
17~18



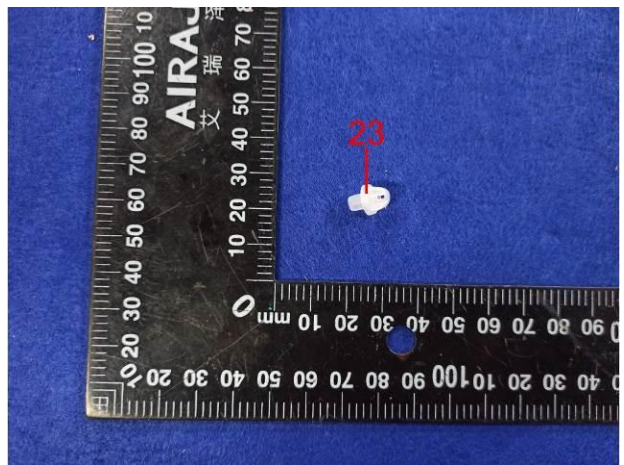
19



20

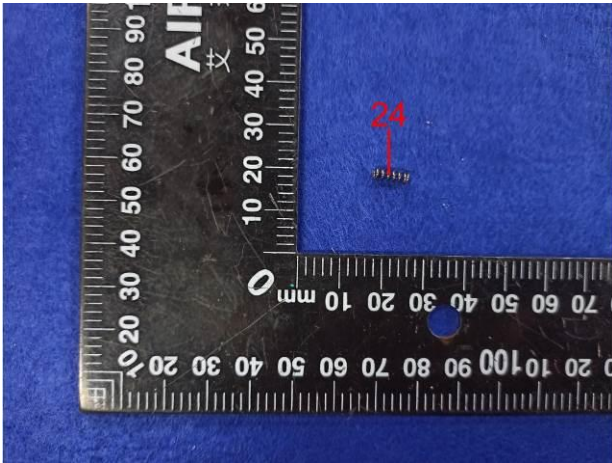


21~22

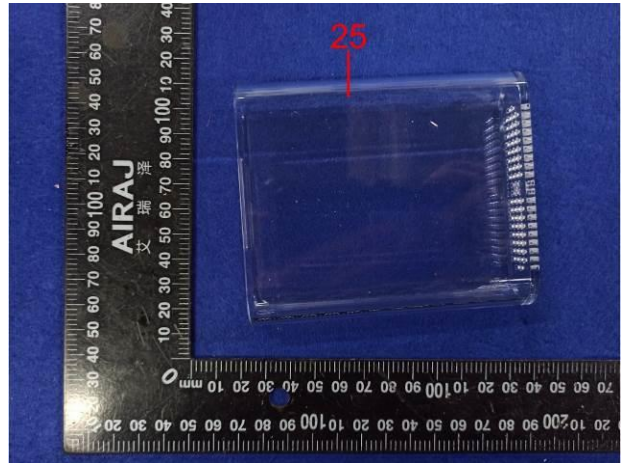


23

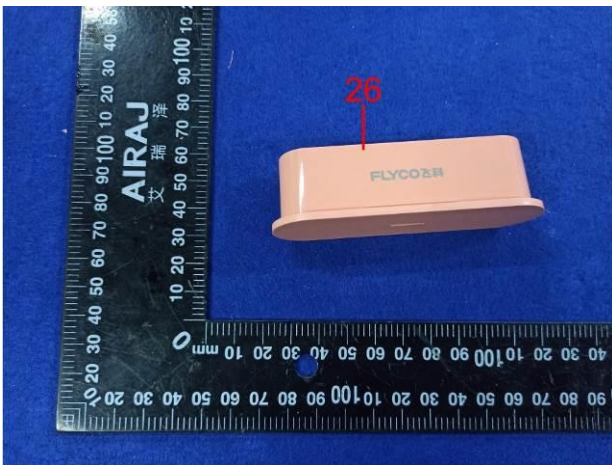
组件/部件/元器件照片



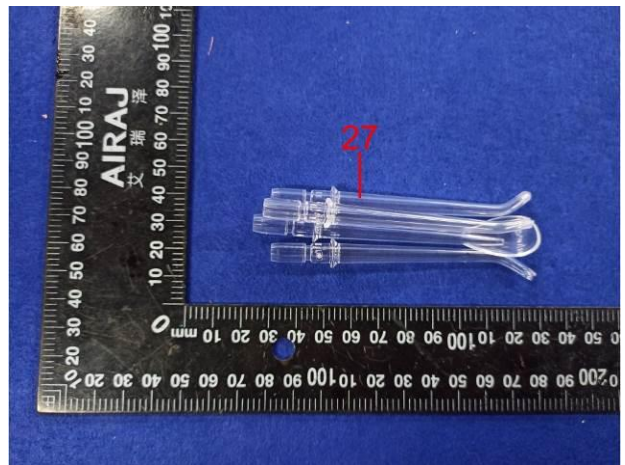
24



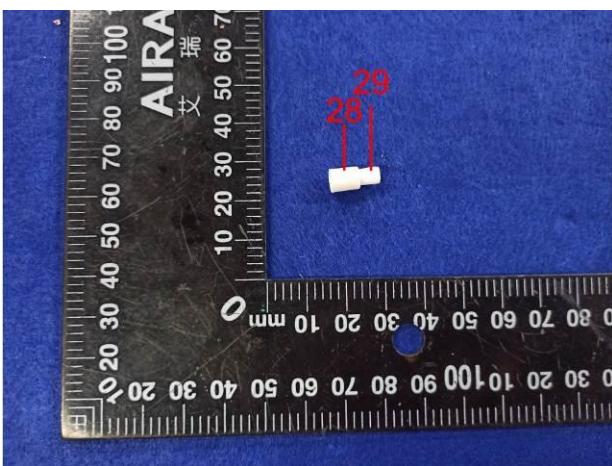
25



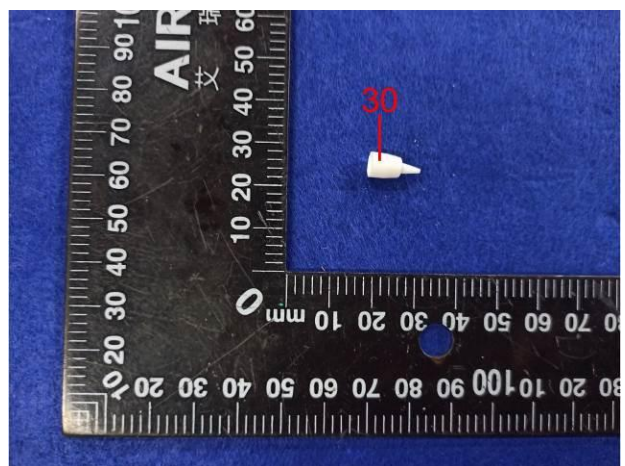
26



27

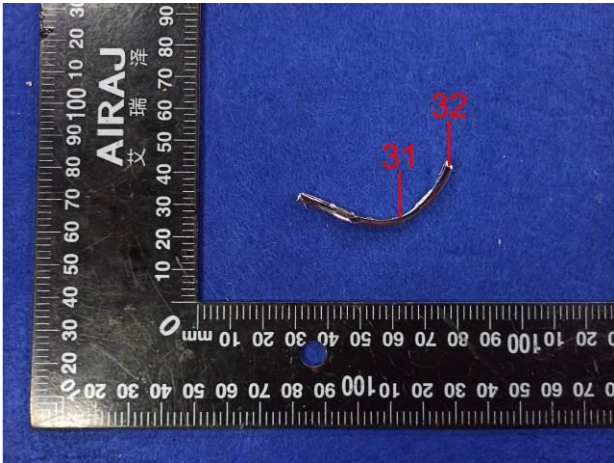


28-29

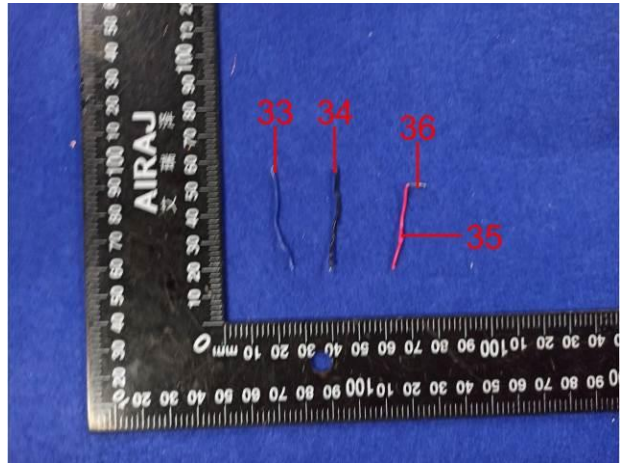


30

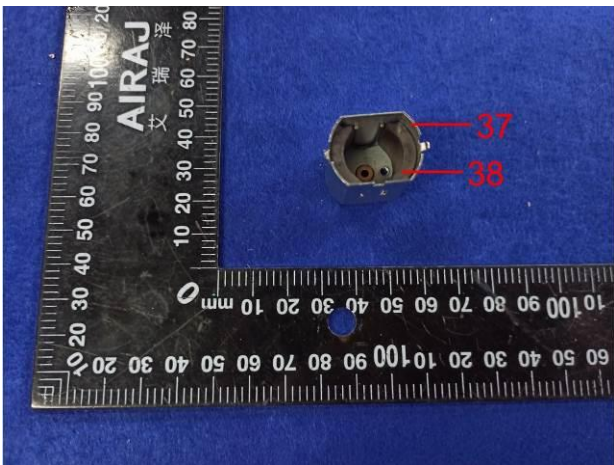
组件/部件/元器件照片



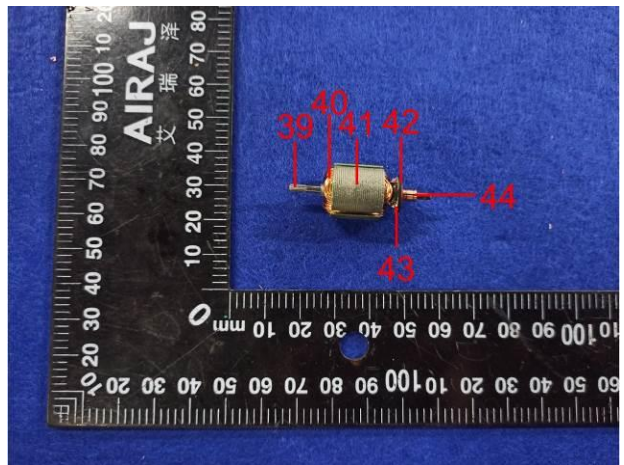
31~32



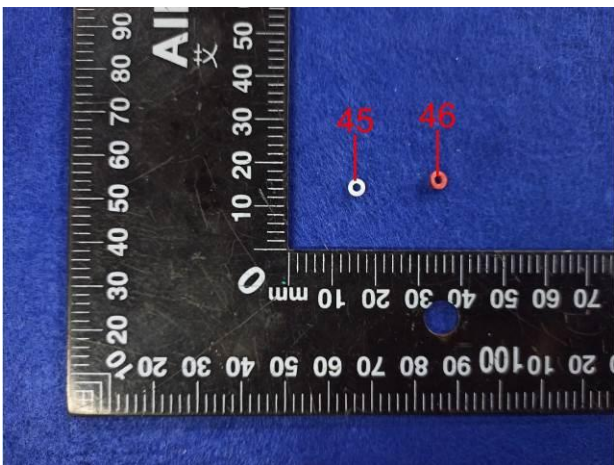
33~36



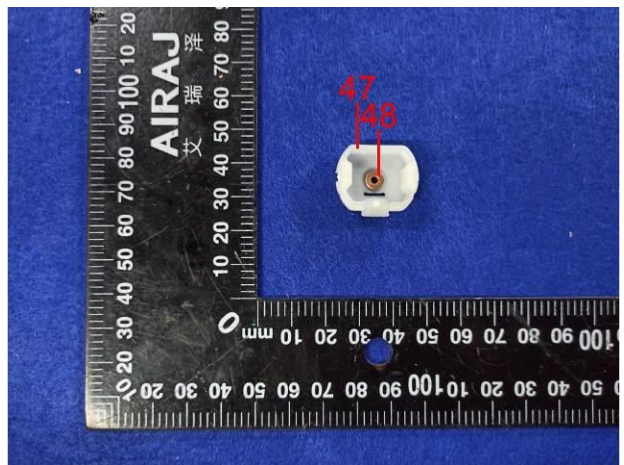
37~38



39~44

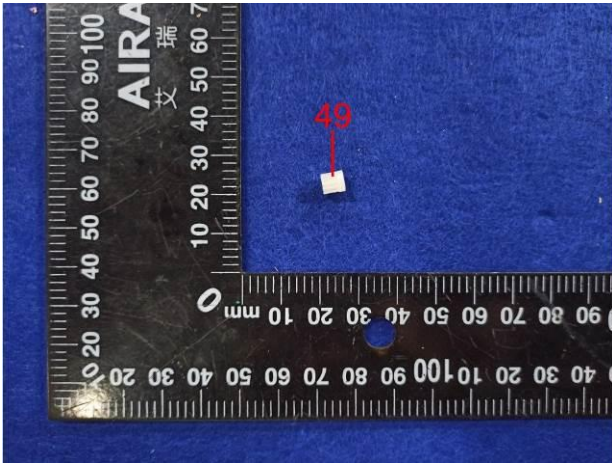


45~46

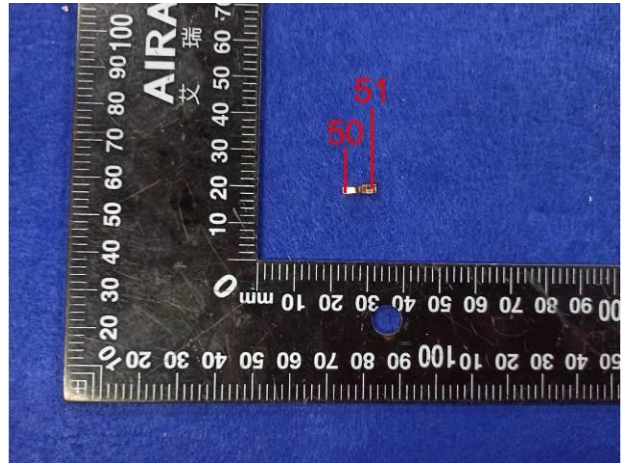


47~48

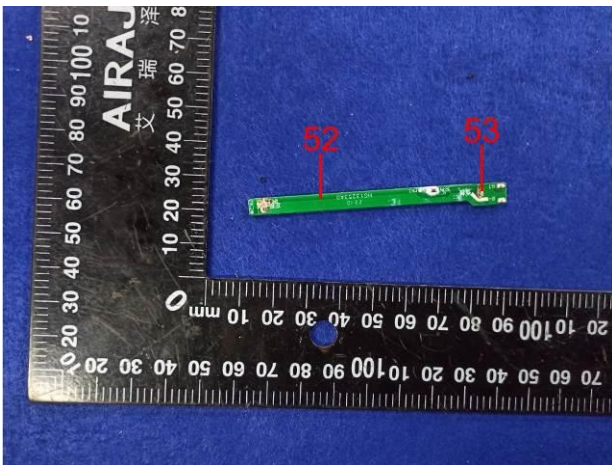
组件/部件/元器件照片



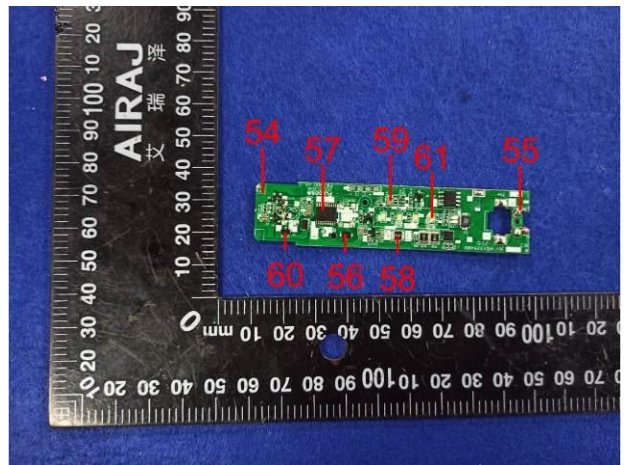
49



50~51



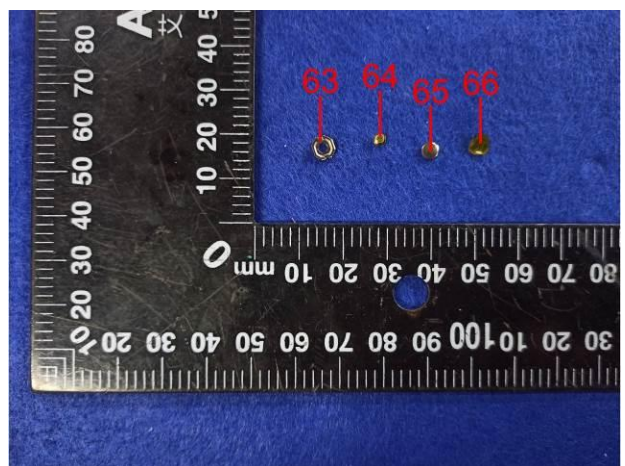
52~53



54~61

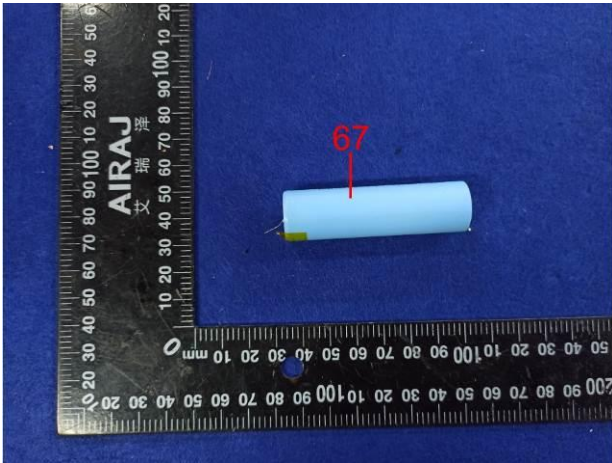


62

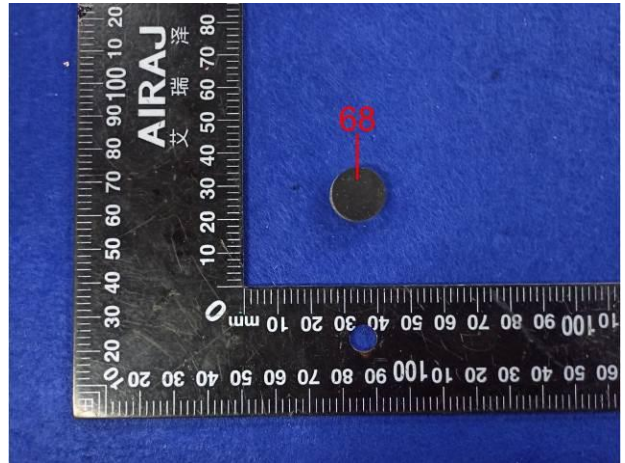


63~66

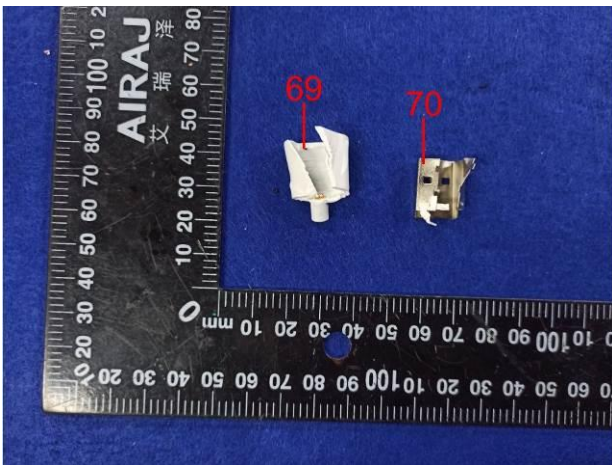
组件/部件/元器件照片



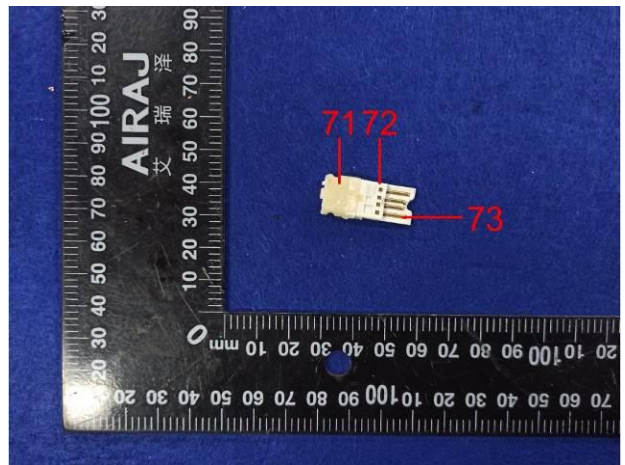
67



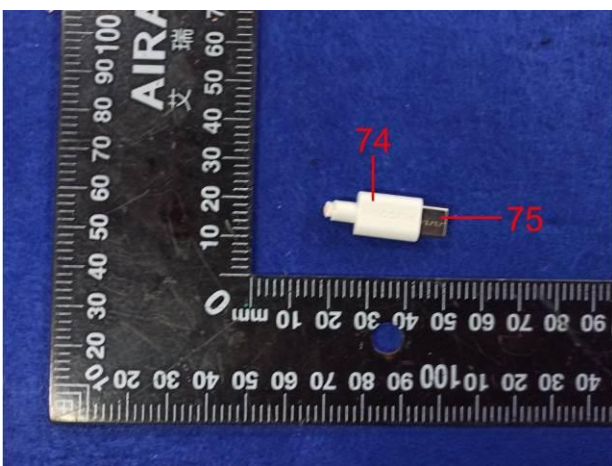
68



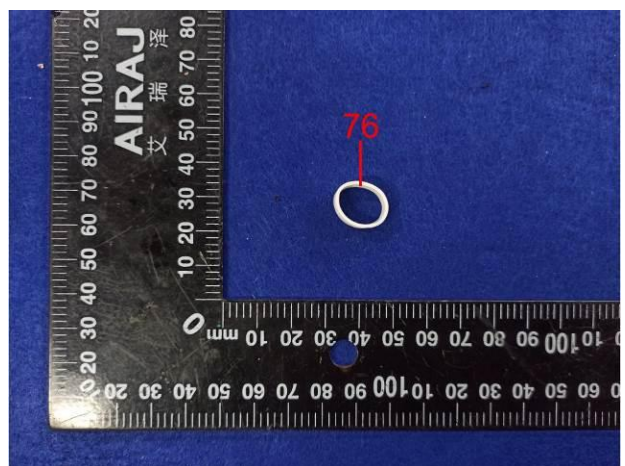
69~70



71~73

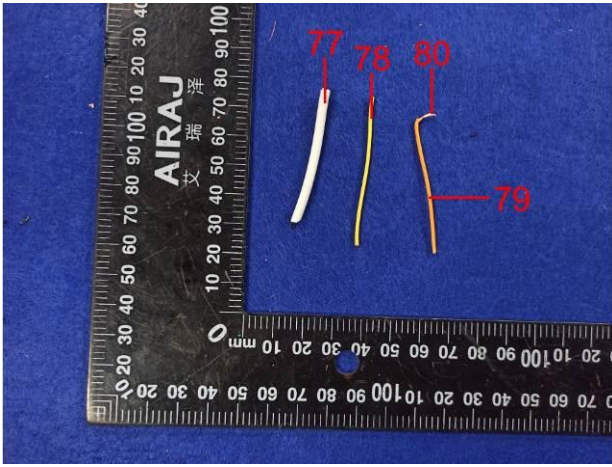


74~75

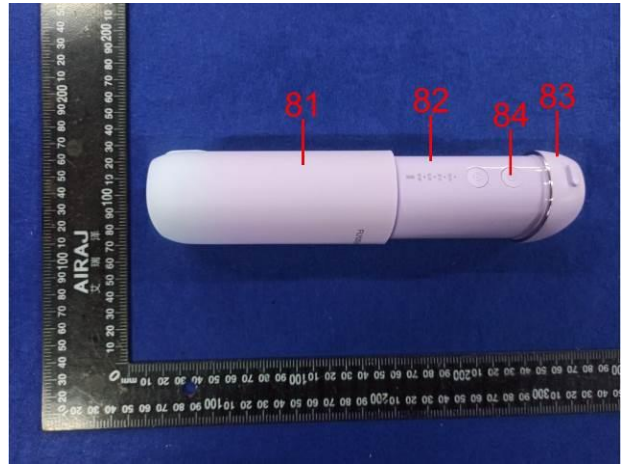


76

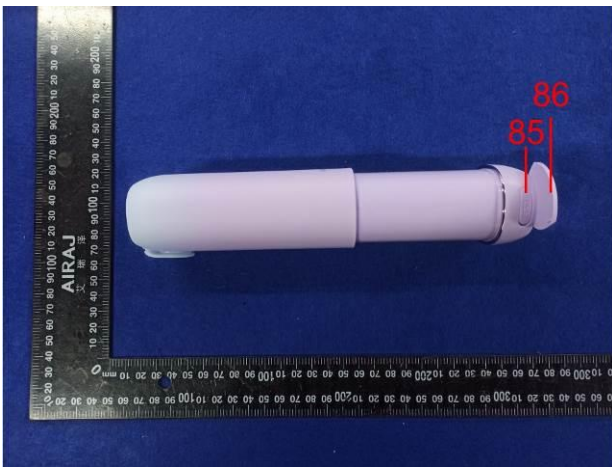
组件/部件/元器件照片



77~80



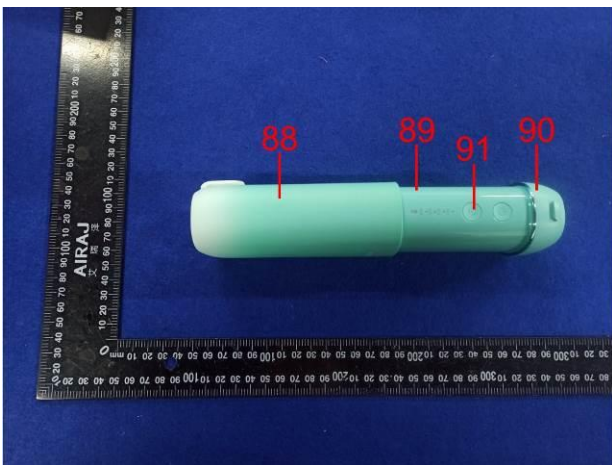
81~84



85~86



87

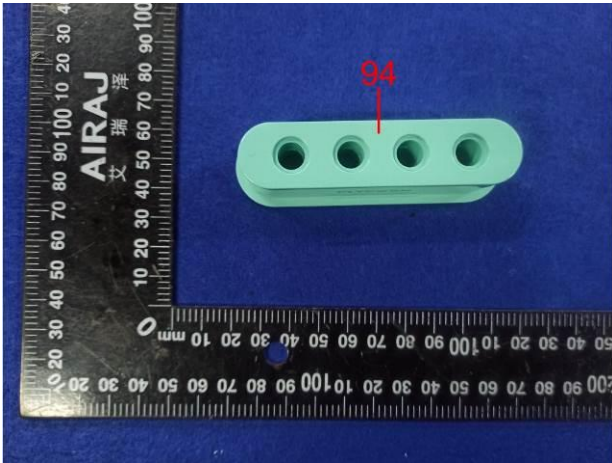


88~91

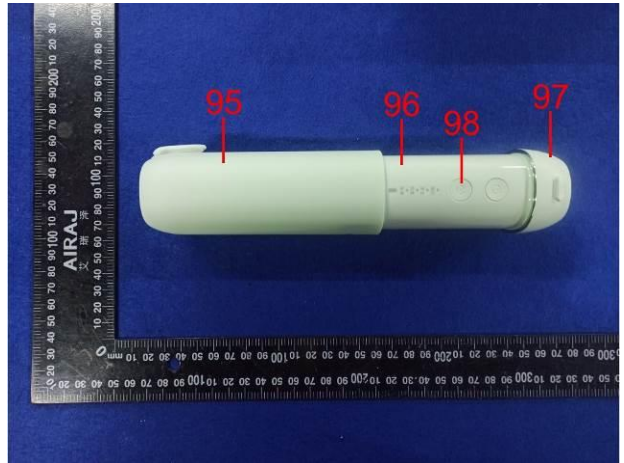


92~93

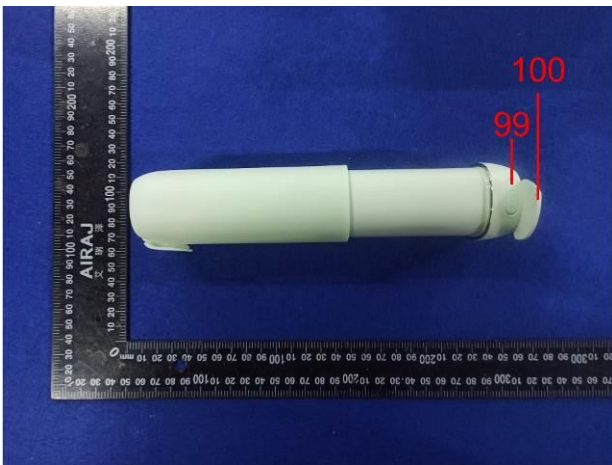
组件/部件/元器件照片



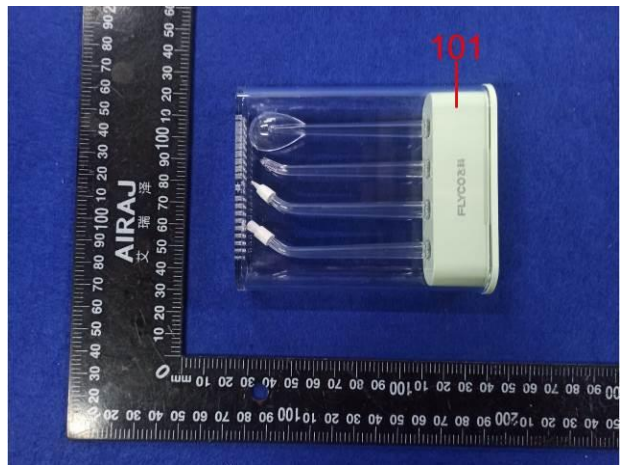
94



95~98



99~100



101

注意事项 Important

1. 报告无检测单位印章无效;

The test report is invalid without the official stamp of Lab.;

2. 未经本试验室书面同意, 不得部分地复制本报告;

Any part photocopies of the test report are forbidden without the written permission from Lab.;

3. 报告无主检、审核、批准人签名无效;

The test report is invalid without the signatures of Author and Reviewer;

4. 报告涂改无效;

The test report is invalid if altered;

5. 对检测报告若有异议, 请于收到报告之日起十五天内向检测单位提出;

Objections to the test report must be submitted to Lab. within 15 days;

6. 一般情况, 委托检测结果仅对所检测样品有效;

Generally, commission test is responsible for the tested samples only;

7. 检测结果中“—”或“N”表示“不适用”, “/”表示“未检测”, “P”表示“通过”或“合格”, “F”表示“不通过”或“不合格”。

As for the test result, “—” or “N” means “not applicable”, “/” means “not testing”, “P” means “pass” and “F” means “fail”.

****报告中未加 CMA 标志时, 检测数据和结果仅供科研、教学或内部质量控制之用。 ****

****Test data and results of the report without CMA mark will only be used for scientific research, teaching or internal quality control. ****

地址: 中国浙江省嘉兴市南湖区嘉兴总部商务花园 3 号楼

Address: Building 3, Jiaxing Advanced Business Park, Nanhu District, Jiaxing, Zhejiang, China

电话(Tel): 0573 82586881

传真(FAX): 0573 82586875

邮政编码(Post Code): 314000

E-mail: jxskb@cvc.org.cn