



中国认可
检测
TESTING
CNAS L0599

测试报告

编号: SHAHG2216282501

日期: 2022年12月01日 第1页,共11页

暖婴小铺(上海)品牌管理有限公司
上海市黄浦区茂名南路205号瑞金大厦2209-2210室

以下测试之样品是由申请者所提供及确认: TISOÜ MONSTER 不锈钢可拆分系列餐具

SGS工作编号: SHHL2211053164CW - SH
 货号: TKCA11002-09, TKCA11002-15, TKCA11002-17, TKCA14002-43
 原产国: 韩国
 样品接收日期: 2022年11月18日
 测试周期: 2022年11月18日 - 2022年12月01日
 测试要求: 根据客户要求测试
 测试方法: 请参见下一页
 测试结果: 请参见下一页

通标标准技术服务(上海)有限公司
授权签名

Lucia Liu刘瑾
批准签署人



Unless otherwise agreed in writing, this document is issued by the Company subject to its General Conditions of Service printed overleaf, available on request or accessible at <http://www.sgs.com/en/Terms-and-Conditions.aspx> and, for electronic format documents, subject to Terms and Conditions for Electronic Documents at <http://www.sgs.com/en/Terms-and-Conditions/Terms-e-Document.aspx>. Attention is drawn to the limitation of liability, indemnification and jurisdiction issues defined therein. Any holder of this document is advised that information contained hereon reflects the Company's findings at the time of its intervention only and within the limits of Client's instructions, if any. The Company's sole responsibility is to its Client and this document does not exonerate parties to a transaction from exercising all their rights and obligations under the transaction documents. This document cannot be reproduced except in full, without prior written approval of the Company. Any unauthorized alteration, forgery or falsification of the content or appearance of this document is unlawful and offenders may be prosecuted to the fullest extent of the law. Unless otherwise stated the results shown in this test report refer only to the sample(s) tested.

Attention: To check the authenticity of testing /inspection report & certificate, please contact us at telephone: (86-755) 8307 1443, or email: CN.Doccheck@sgs.com

SGS-CSTC Standards Technical Service (Shanghai) Co., Ltd.
Testing Center-Citizens' Laboratory

3rd Building, No. 889 Yishan Road Xuhui District, Shanghai China 200233
中国·上海·徐汇区宜山路889号3号楼 邮编: 200233

t E&E (86-21) 61402553 f E&E (86-21) 64953679 www.sgsgroup.com.cn
t HL (86-21) 61402594 f HL (86-21) 61156899 e sgs.china@sgs.com



中国认可
检测
TESTING
CNAS L0599

测试报告

编号: SHAHG2216282501

日期: 2022年12月01日 第2页,共11页

测试结果概要:

测试要求	说明
GB4806.7-2016-脱色试验	符合
GB 4806.7-2016-感官(外观: 色泽正常, 无异臭、不洁物等)	符合
GB 4806.7-2016-感官(浸泡液: 迁移试验所得浸泡液无浑浊、沉淀、异臭等感官性的劣变)	符合
GB 4806.9-2016-感官(外观: 表面应清洁, 镀层不应开裂、剥落, 焊接部分应光洁, 无气孔、裂缝、毛刺)	符合
GB 4806.9-2016-感官(浸泡液: 迁移试验所得浸泡液不应有异臭)	符合
GB 4806.11-2016-感官(外观: 色泽正常, 无异臭、污物)	符合
GB 4806.11-2016-感官(浸泡液: 迁移试验所得浸泡液不应有着色、浑浊、沉淀、异臭等感官性的劣变)	符合
GB4806.9-2016-重金属迁移量	符合
GB4806.7-2016-总迁移量	符合
GB 4806.7-2016-高锰酸钾消耗量	符合
GB 4806.7-2016-重金属(以Pb计)	符合
GB4806.11-2016-总迁移量	符合
GB4806.11-2016-高锰酸钾消耗量	符合
GB4806.11-2016-重金属(以Pb计)	符合



Unless otherwise agreed in writing, this document is issued by the Company subject to its General Conditions of Service printed overleaf, available on request or accessible at <http://www.sgs.com/en/Terms-and-Conditions.aspx> and, for electronic format documents, subject to Terms and Conditions for Electronic Documents at <http://www.sgs.com/en/Terms-and-Conditions/Terms-e-Document.aspx>. Attention is drawn to the limitation of liability, indemnification and jurisdiction issues defined therein. Any holder of this document is advised that information contained hereon reflects the Company's findings at the time of its intervention only and within the limits of Client's instructions, if any. The Company's sole responsibility is to its Client and this document does not exonerate parties to a transaction from exercising all their rights and obligations under the transaction documents. This document cannot be reproduced except in full, without prior written approval of the Company. Any unauthorized alteration, forgery or falsification of the content or appearance of this document is unlawful and offenders may be prosecuted to the fullest extent of the law. Unless otherwise stated the results shown in this test report refer only to the sample(s) tested.

Attention: To check the authenticity of testing /inspection report & certificate, please contact us at telephone: (86-755) 8307 1443, or email: CN.Doccheck@sgs.com

SGS-CSTC (Shanghai) Technical Services (Shanghai) Co., Ltd.
Testing Center-Citronest Laboratory

3rd Building, No.889 Yishan Road Xuhui District, Shanghai China 200233
中国·上海·徐汇区宜山路889号3号楼 邮编: 200233

t E&E (86-21) 61402553 f E&E (86-21) 64953679 www.sgsgroup.com.cn
t HL (86-21) 61402594 f HL (86-21) 61156899 e sgs.china@sgs.com

测试报告

编号: SHAHG2216282501

日期: 2022年12月01日 第3页,共11页

测试结果:

测试样品描述:

样品编号	SGS样品ID	描述	材质 (客户提供)
SN1	SHA22-162825.001	黄色塑料碗 (大)	PP
SN2	SHA22-162825.002	黄色塑料碗 (小)	PP
SN3	SHA22-162825.003	黄色塑料杯	PP
SN4	SHA22-162825.004	橙色塑料碗盖	PP
SN5	SHA22-162825.005	橙色塑料杯盖	PP
SN6	SHA22-162825.006	银色金属碗 (大)	304不锈钢
SN7	SHA22-162825.007	银色金属勺	304不锈钢
SN8	SHA22-162825.008	橙色硅胶盖	硅橡胶

备注:

- (1) mg/kg = 毫克每千克
- (2) % = 质量百分比
- (3) °C= 摄氏度
- (4) RL = 报告限
- (5) ND = 未检出 (< RL)
- (6) < = 小于

GB4806.7-2016-脱色试验

测试方法: GB31604.7-2016。

测试项目	限值	003	004
脱脂棉颜色(无水乙醇)	★	阴性	阴性
脱脂棉颜色(植物油)	★	阴性	阴性
浸泡液颜色	★	阴性	阴性
说明		符合	符合

备注:

- (1) ★=阴性=无颜色
- (2) (阳性)=有颜色

GB4806.9-2016-重金属迁移量

测试方法: GB 31604.49-2016 第二部分第一法。

模拟液: 4% 乙酸溶液(V/V)



Unless otherwise agreed in writing, this document is issued by the Company subject to its General Conditions of Service printed overleaf, available on request or accessible at <http://www.sgs.com/en/Terms-and-Conditions.aspx> and, for electronic format documents, subject to Terms and Conditions for Electronic Documents at <http://www.sgs.com/en/Terms-and-Conditions/Terms-e-Documents.aspx>. Attention is drawn to the limitation of liability, indemnification and jurisdiction issues defined therein. Any holder of this document is advised that information contained hereon reflects the Company's findings at the time of its intervention only and within the limits of Client's instructions, if any. The Company's sole responsibility is to its Client and this document does not exonerate parties to a transaction from exercising all their rights and obligations under the transaction documents. This document cannot be reproduced except in full, without prior written approval of the Company. Any unauthorized alteration, forgery or falsification of the content or appearance of this document is unlawful and offenders may be prosecuted to the fullest extent of the law. Unless otherwise stated the results shown in this test report refer only to the sample(s) tested.

Attention: To check the authenticity of testing /inspection report & certificate, please contact us at telephone: (86-755) 8307 1443, or email: CN.Doccheck@sgs.com
 3rd Building, No.889 Yishan Road Xuhui District, Shanghai China 200233 t E&E (86-21) 61402553 f E&E (86-21) 64953679 www.sgsgroup.com.cn
 中国·上海·徐汇区宜山路889号3号楼 邮编: 200233 t HL (86-21) 61402594 f HL (86-21) 61156899 e sgs.china@sgs.com

测试报告

编号: SHAHG2216282501

日期: 2022年12月01日 第4页,共11页

迁移测试条件: 煮沸30min, 室温放置24h

测试项目	限值	单位	RL	006
迁移次数	-	-	-	第三次
面积/体积	-	dm ² /kg	-	5.3
砷(As)迁移量	0.04	mg/kg	0.004	ND
镉(Cd)迁移量	0.02	mg/kg	0.002	ND
铅(Pb)迁移量	0.05	mg/kg	0.005	ND
铬(Cr)迁移量	2	mg/kg	0.2	ND
镍(Ni)迁移量	0.5	mg/kg	0.05	ND
说明				符合

 模拟液: 4% 乙酸溶液(V/V)
 迁移测试条件: 煮沸30min, 室温放置24h

测试项目	限值	单位	RL	007
迁移次数	-	-	-	第三次
面积/体积	-	dm ² /kg	-	6.0
砷(As)迁移量	0.04	mg/kg	0.004	ND
镉(Cd)迁移量	0.02	mg/kg	0.002	ND
铅(Pb)迁移量	0.05	mg/kg	0.005	ND
铬(Cr)迁移量	2	mg/kg	0.2	ND
镍(Ni)迁移量	0.5	mg/kg	0.05	ND
说明				符合

GB4806.7-2016-总迁移量

测试方法: GB 31604.8-2016。

模拟液	时间	温度	限值	单位	RL	001	说明
4% 乙酸 (V/V)	2.0 hr(s)	70 °C	10	mg/dm ²	3.0	ND	符合
50% 乙醇 (V/V)	2.0 hr(s)	70 °C	10	mg/dm ²	3.0	ND	符合
95% 乙醇	2.0 hr(s)	60 °C	10	mg/dm ²	3.0	ND	符合
异辛烷	0.5 hr(s)	40 °C	10	mg/dm ²	3.0	ND	符合

备注:

- (1) 测试条件和模拟液由客户指定。
- (2) mg/dm²= 毫克每平方米
- (3) 根据GB31604.1-2015, 对于重复使用的样品, 测试数据是第三次萃取的结果。



Unless otherwise agreed in writing, this document is issued by the Company subject to its General Conditions of Service printed overleaf, available on request or accessible at <http://www.sgs.com/en/Terms-and-Conditions.aspx> and, for electronic format documents, subject to Terms and Conditions for Electronic Documents at <http://www.sgs.com/en/Terms-and-Conditions/Terms-e-Document.aspx>. Attention is drawn to the limitation of liability, indemnification and jurisdiction issues defined therein. Any holder of this document is advised that information contained hereon reflects the Company's findings at the time of its intervention only and within the limits of Client's instructions, if any. The Company's sole responsibility is to its Client and this document does not exonerate parties to a transaction from exercising all their rights and obligations under the transaction documents. This document cannot be reproduced except in full, without prior written approval of the Company. Any unauthorized alteration, forgery or falsification of the content or appearance of this document is unlawful and offenders may be prosecuted to the fullest extent of the law. Unless otherwise stated the results shown in this test report refer only to the sample(s) tested.

Attention: To check the authenticity of testing /inspection report & certificate, please contact us at telephone: (86-755) 8307 1443, or email: CN.Doccheck@sgs.com

测试报告

编号: SHAHG2216282501

日期: 2022年12月01日 第5页,共11页

GB 4806.7-2016-高锰酸钾消耗量

测试方法: GB 31604.2-2016。

模拟液	时间	温度	限值	单位	RL	002	说明
蒸馏水	2.0 hr(s)	60 °C	10	mg/kg	1.0	ND	符合

备注:

(1) 根据GB31604.1-2015, 对于重复使用的样品, 测试数据是第三次萃取的结果。

GB 4806.7-2016-重金属(以Pb计)

测试方法: GB 31604.9-2016 第一法。

模拟液	时间	温度	限值	单位	RL	002	说明
4% 乙酸 (V/V)	2.0 hr(s)	60 °C	1	mg/kg	-	< 1	符合

模拟液	时间	温度	限值	单位	RL	004	说明
4% 乙酸 (V/V)	2.0 hr(s)	60 °C	1	mg/kg	-	< 1	符合

模拟液	时间	温度	限值	单位	RL	005	说明
4% 乙酸 (V/V)	2.0 hr(s)	60 °C	1	mg/kg	-	< 1	符合

GB4806.11-2016-总迁移量

测试方法: GB 31604.8-2016。

模拟液	时间	温度	限值	单位	RL	008	说明
10% 乙醇 (V/V)	2.0 hr(s)	70 °C	10	mg/dm ²	3.0	ND	符合

备注:

- (1) 测试条件和模拟液由客户指定。
- (2) mg/dm²= 毫克每平方米
- (3) 根据GB31604.1-2015, 对于重复使用的样品, 测试数据是第三次萃取的结果。

GB4806.11-2016-高锰酸钾消耗量

测试方法: GB 31604.2-2016。

模拟液	时间	温度	限值	单位	RL	008	说明
蒸馏水	0.5 hr(s)	60 °C	10	mg/kg	1.0	ND	符合

备注:



Unless otherwise agreed in writing, this document is issued by the Company subject to its General Conditions of Service printed overleaf, available on request or accessible at <http://www.sgs.com/en/Terms-and-Conditions.aspx> and, for electronic format documents, subject to Terms and Conditions for Electronic Documents at <http://www.sgs.com/en/Terms-and-Conditions/Terms-e-Documents.aspx>. Attention is drawn to the limitation of liability, indemnification and jurisdiction issues defined therein. Any holder of this document is advised that information contained hereon reflects the Company's findings at the time of its intervention only and within the limits of Client's instructions, if any. The Company's sole responsibility is to its Client and this document does not exonerate parties to a transaction from exercising all their rights and obligations under the transaction documents. This document cannot be reproduced except in full, without prior written approval of the Company. Any unauthorized alteration, forgery or falsification of the content or appearance of this document is unlawful and offenders may be prosecuted to the fullest extent of the law. Unless otherwise stated the results shown in this test report refer only to the sample(s) tested.

Attention: To check the authenticity of testing /inspection report & certificate, please contact us at telephone: (86-755) 8307 1443, or email: CN.Doccheck@sgs.com



中国认可
检测
TESTING
CNAS L0599

测试报告

编号: SHAHG2216282501

日期: 2022年12月01日 第6页,共11页

(1) 根据GB31604.1-2015, 对于重复使用的样品, 测试数据是第三次萃取的结果。

GB4806.11-2016-重金属 (以Pb计)

测试方法: GB 31604.9-2016 第一法。

模拟液	时间	温度	限值	单位	RL	008	说明
4% 乙酸 (V/V)	0.5 hr(s)	60 °C	1	mg/kg	-	< 1	符合

除非另有说明, 此报告结果仅对测试的样品负责。本报告未经本公司书面许可, 不可部分复制。



Unless otherwise agreed in writing, this document is issued by the Company subject to its General Conditions of Service printed overleaf, available on request or accessible at <http://www.sgs.com/en/Terms-and-Conditions.aspx> and, for electronic format documents, subject to Terms and Conditions for Electronic Documents at <http://www.sgs.com/en/Terms-and-Conditions/Terms-e-Documents.aspx>. Attention is drawn to the limitation of liability, indemnification and jurisdiction issues defined therein. Any holder of this document is advised that information contained hereon reflects the Company's findings at the time of its intervention only and within the limits of Client's instructions, if any. The Company's sole responsibility is to its Client and this document does not exonerate parties to a transaction from exercising all their rights and obligations under the transaction documents. This document cannot be reproduced except in full, without prior written approval of the Company. Any unauthorized alteration, forgery or falsification of the content or appearance of this document is unlawful and offenders may be prosecuted to the fullest extent of the law. Unless otherwise stated the results shown in this test report refer only to the sample(s) tested.

Attention: To check the authenticity of testing /inspection report & certificate, please contact us at telephone: (86-755) 8307 1443, or email: CN.Doccheck@sgs.com

SGS-CSTC Standards Technical Services (Shanghai) Co., Ltd.
Testing Center-Citizens' Laboratory

3rd Building, No.889 Yishan Road Xuhui District, Shanghai China 200233
中国·上海·徐汇区宜山路889号3号楼 邮编: 200233

t E&E (86-21) 61402553 f E&E (86-21) 64953679 www.sgs.com.cn
t HL (86-21) 61402594 f HL (86-21) 61156899 e sgs.china@sgs.com

测试报告

编号: SHAHG2216282501

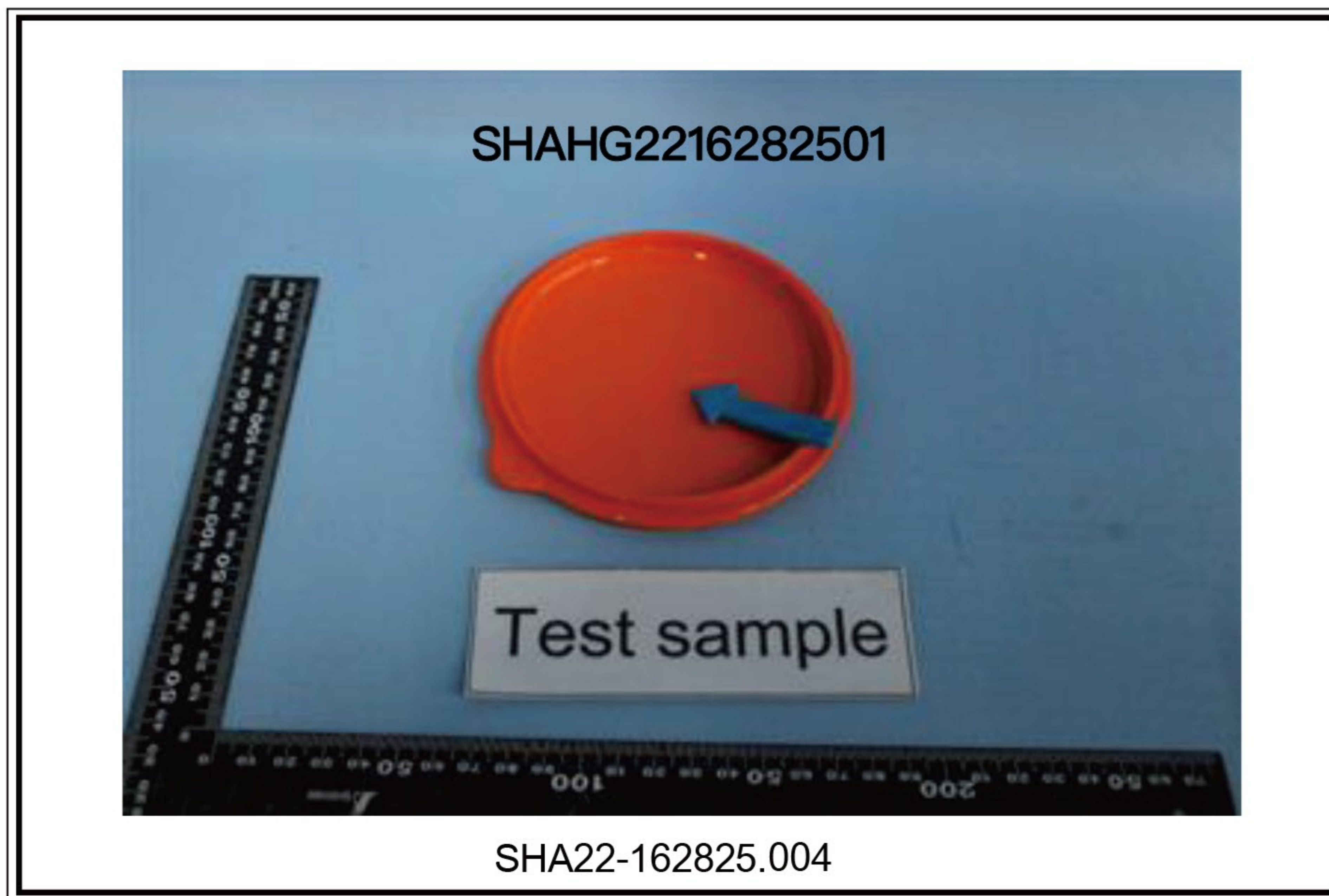
日期: 2022年12月01日 第7页,共11页

样品照片:



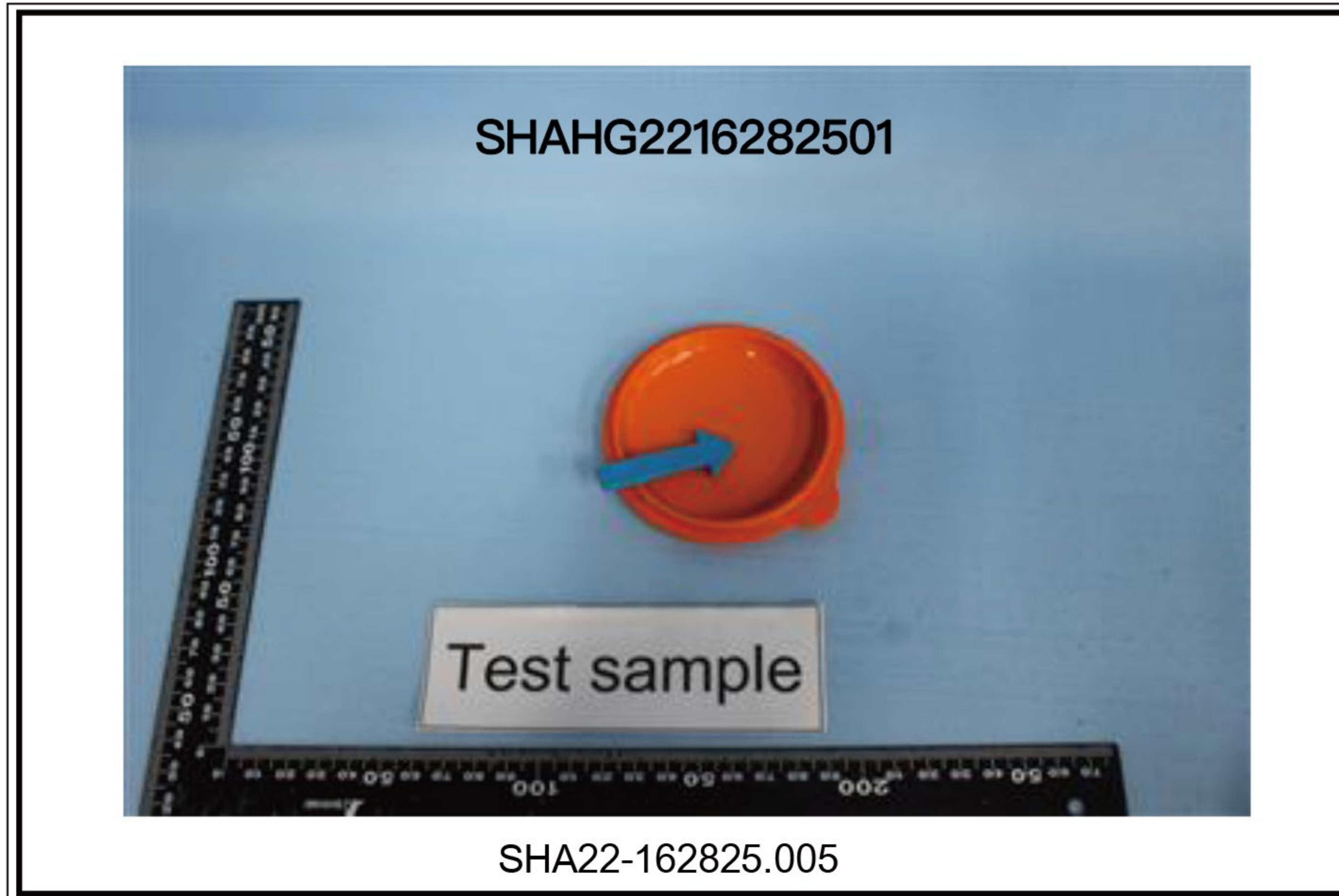
Unless otherwise agreed in writing, this document is issued by the Company subject to its General Conditions of Service printed overleaf, available on request or accessible at <http://www.sgs.com/en/Terms-and-Conditions.aspx> and, for electronic format documents, subject to Terms and Conditions for Electronic Documents at <http://www.sgs.com/en/Terms-and-Conditions/Terms-e-Document.aspx>. Attention is drawn to the limitation of liability, indemnification and jurisdiction issues defined therein. Any holder of this document is advised that information contained hereon reflects the Company's findings at the time of its intervention only and within the limits of Client's instructions, if any. The Company's sole responsibility is to its Client and this document does not exonerate parties to a transaction from exercising all their rights and obligations under the transaction documents. This document cannot be reproduced except in full, without prior written approval of the Company. Any unauthorized alteration, forgery or falsification of the content or appearance of this document is unlawful and offenders may be prosecuted to the fullest extent of the law. Unless otherwise stated the results shown in this test report refer only to the sample(s) tested.

Attention: To check the authenticity of testing /inspection report & certificate, please contact us at telephone: (86-755) 8307 1443, or email: CN.Doccheck@sgs.com



Unless otherwise agreed in writing, this document is issued by the Company subject to its General Conditions of Service printed overleaf, available on request or accessible at <http://www.sgs.com/en/Terms-and-Conditions.aspx> and, for electronic format documents, subject to Terms and Conditions for Electronic Documents at <http://www.sgs.com/en/Terms-and-Conditions/Terms-e-Documents.aspx>. Attention is drawn to the limitation of liability, indemnification and jurisdiction issues defined therein. Any holder of this document is advised that information contained hereon reflects the Company's findings at the time of its intervention only and within the limits of Client's instructions, if any. The Company's sole responsibility is to its Client and this document does not exonerate parties to a transaction from exercising all their rights and obligations under the transaction documents. This document cannot be reproduced except in full, without prior written approval of the Company. Any unauthorized alteration, forgery or falsification of the content or appearance of this document is unlawful and offenders may be prosecuted to the fullest extent of the law. Unless otherwise stated the results shown in this test report refer only to the sample(s) tested.

Attention: To check the authenticity of testing /inspection report & certificate, please contact us at telephone: (86-755) 8307 1443, or email: CN.Doccheck@sgs.com



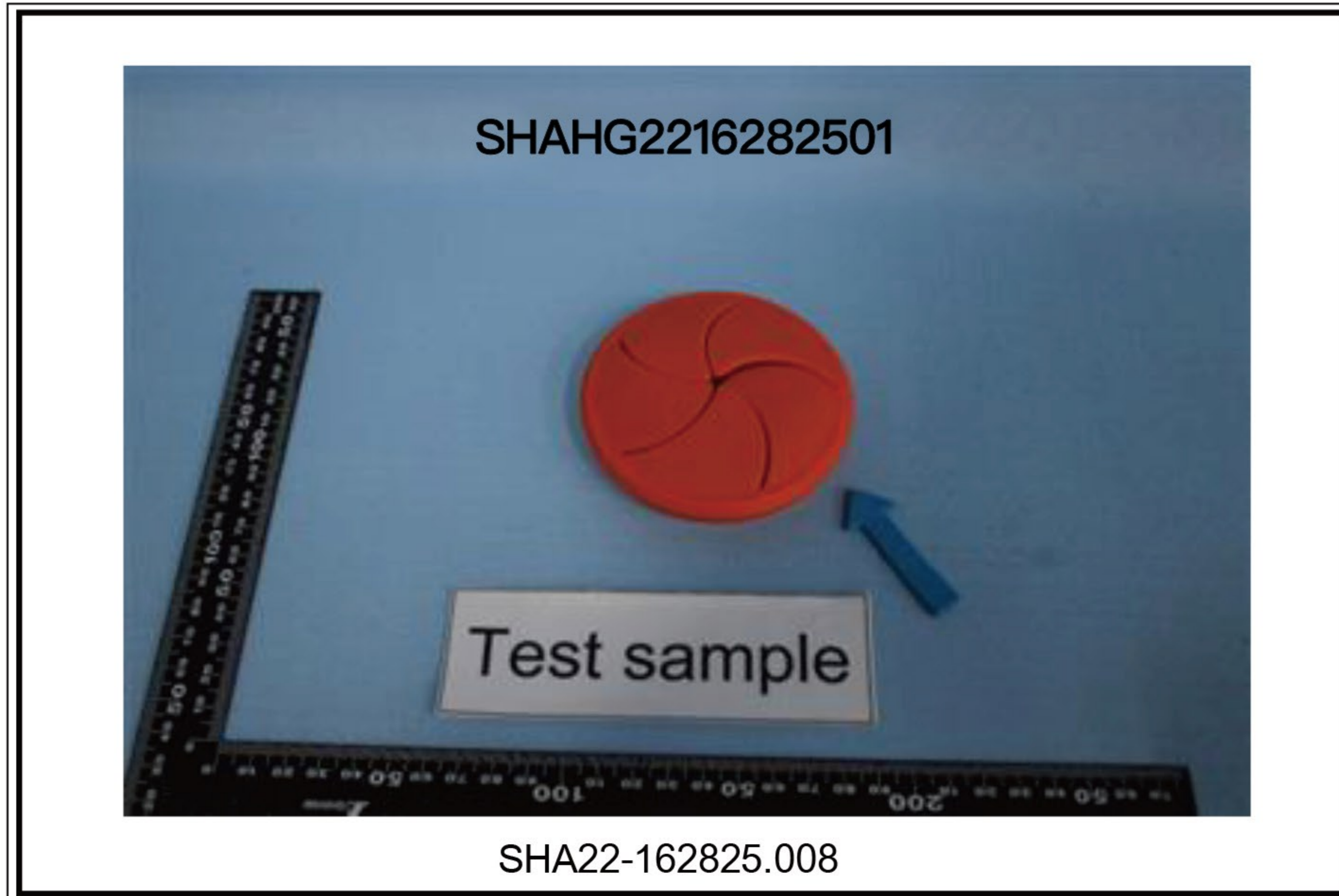
Unless otherwise agreed in writing, this document is issued by the Company subject to its General Conditions of Service printed overleaf, available on request or accessible at <http://www.sgs.com/en/Terms-and-Conditions.aspx> and, for electronic format documents, subject to Terms and Conditions for Electronic Documents at <http://www.sgs.com/en/Terms-and-Conditions/Terms-e-Document.aspx>. Attention is drawn to the limitation of liability, indemnification and jurisdiction issues defined therein. Any holder of this document is advised that information contained hereon reflects the Company's findings at the time of its intervention only and within the limits of Client's instructions, if any. The Company's sole responsibility is to its Client and this document does not exonerate parties to a transaction from exercising all their rights and obligations under the transaction documents. This document cannot be reproduced except in full, without prior written approval of the Company. Any unauthorized alteration, forgery or falsification of the content or appearance of this document is unlawful and offenders may be prosecuted to the fullest extent of the law. Unless otherwise stated the results shown in this test report refer only to the sample(s) tested.

Attention: To check the authenticity of testing /inspection report & certificate, please contact us at telephone: (86-755) 8307 1443, or email: CN.Doccheck@sgs.com



Unless otherwise agreed in writing, this document is issued by the Company subject to its General Conditions of Service printed overleaf, available on request or accessible at <http://www.sgs.com/en/Terms-and-Conditions.aspx> and, for electronic format documents, subject to Terms and Conditions for Electronic Documents at <http://www.sgs.com/en/Terms-and-Conditions/Terms-e-Document.aspx>. Attention is drawn to the limitation of liability, indemnification and jurisdiction issues defined therein. Any holder of this document is advised that information contained hereon reflects the Company's findings at the time of its intervention only and within the limits of Client's instructions, if any. The Company's sole responsibility is to its Client and this document does not exonerate parties to a transaction from exercising all their rights and obligations under the transaction documents. This document cannot be reproduced except in full, without prior written approval of the Company. Any unauthorized alteration, forgery or falsification of the content or appearance of this document is unlawful and offenders may be prosecuted to the fullest extent of the law. Unless otherwise stated the results shown in this test report refer only to the sample(s) tested.

Attention: To check the authenticity of testing /inspection report & certificate, please contact us at telephone: (86-755) 8307 1443, or email: CN.Doccheck@sgs.com



此照片仅限于随SGS正本报告使用

*** 报告完 ***



Unless otherwise agreed in writing, this document is issued by the Company subject to its General Conditions of Service printed overleaf, available on request or accessible at <http://www.sgs.com/en/Terms-and-Conditions.aspx> and, for electronic format documents, subject to Terms and Conditions for Electronic Documents at <http://www.sgs.com/en/Terms-and-Conditions/Terms-e-Documents.aspx>. Attention is drawn to the limitation of liability, indemnification and jurisdiction issues defined therein. Any holder of this document is advised that information contained hereon reflects the Company's findings at the time of its intervention only and within the limits of Client's instructions, if any. The Company's sole responsibility is to its Client and this document does not exonerate parties to a transaction from exercising all their rights and obligations under the transaction documents. This document cannot be reproduced except in full, without prior written approval of the Company. Any unauthorized alteration, forgery or falsification of the content or appearance of this document is unlawful and offenders may be prosecuted to the fullest extent of the law. Unless otherwise stated the results shown in this test report refer only to the sample(s) tested.

Attention: To check the authenticity of testing /inspection report & certificate, please contact us at telephone: (86-755) 8307 1443, or email: CN.Doccheck@sgs.com