



210900110152



中国认可
国际互认
检测
TESTING
CNAS L0128



W024061014272

检测报告

Test Report



vsb6377L

产品名称：雪吻巧克力（草莓口味） 33g
Name of Sample

规格型号：33g/盒
Type

委托单位：明治制果食品工业（上海）有限公司
Applicant

检测类别：委托检测
Test Purpose



上海市质量监督检验技术研究院
Shanghai Institute of Quality Inspection and Technical Research

上海市质量监督检验技术研究院
检测报告

报告编号: W024061014272

共4页 第1页

样品名称	雪吻巧克力(草莓口味) 33g		检测类别	委托检测
型号规格等级	33g/盒 合格品		商标	明治meiji
委托单位	明治制果食品工业(上海)有限公司			
受检单位	明治制果食品工业(上海)有限公司			
标称生产单位	明治制果食品工业(上海)有限公司			
委托书编号	W024061014272	委托/抽样日期	2024.08.16	
到样日期	2024.08.16	抽样地点	/	
样品数量	5盒	受检批数量	/	
生产日期	2024.08.07	批号/编号	2024.08.07	
样品到样状态	完好			委托方送样
检测地点	上海市苍梧路381号			
检测依据	GB 7718-2011《食品安全国家标准 预包装食品标签通则》 GB 28050-2011《食品安全国家标准 预包装食品营养标签通则》 GB/T 19343-2016《巧克力及巧克力制品、代可可脂巧克力及代可可脂巧克力制品》			
判定依据	GB 7718-2011《食品安全国家标准 预包装食品标签通则》 GB 28050-2011《食品安全国家标准 预包装食品营养标签通则》 GB/T 19343-2016《巧克力及巧克力制品、代可可脂巧克力及代可可脂巧克力制品》			
检测日期	2024年08月16日至2024年08月26日			
检测结论	经检查,该样品标签符合上述检测依据/判定依据相关规定。详见本报告检测结果汇总页。 (检测报告专用章) 签发日期: 2024年08月26日			
委托单位 通讯资料	地址	上海市松江区松江工业区新飞路1111号		
	邮编	201611	电话	67601212
备注	本报告检验检测结论是根据检验检测依据/判定依据仅对所检项目得出的,不代表未经检验检测的项目或功能符合要求。 本报告共有2份,分别为W024061014272, W024061014272-1。 注意事项、声明及所属单位一览表为本报告的组成部分。			

批准: 林琳
副科长

林琳

审核:

吴新

主检:

邱朝宏

检测报告

报告编号: W024061014272

上海市质量监督检验技术研究院

共4页 第2页

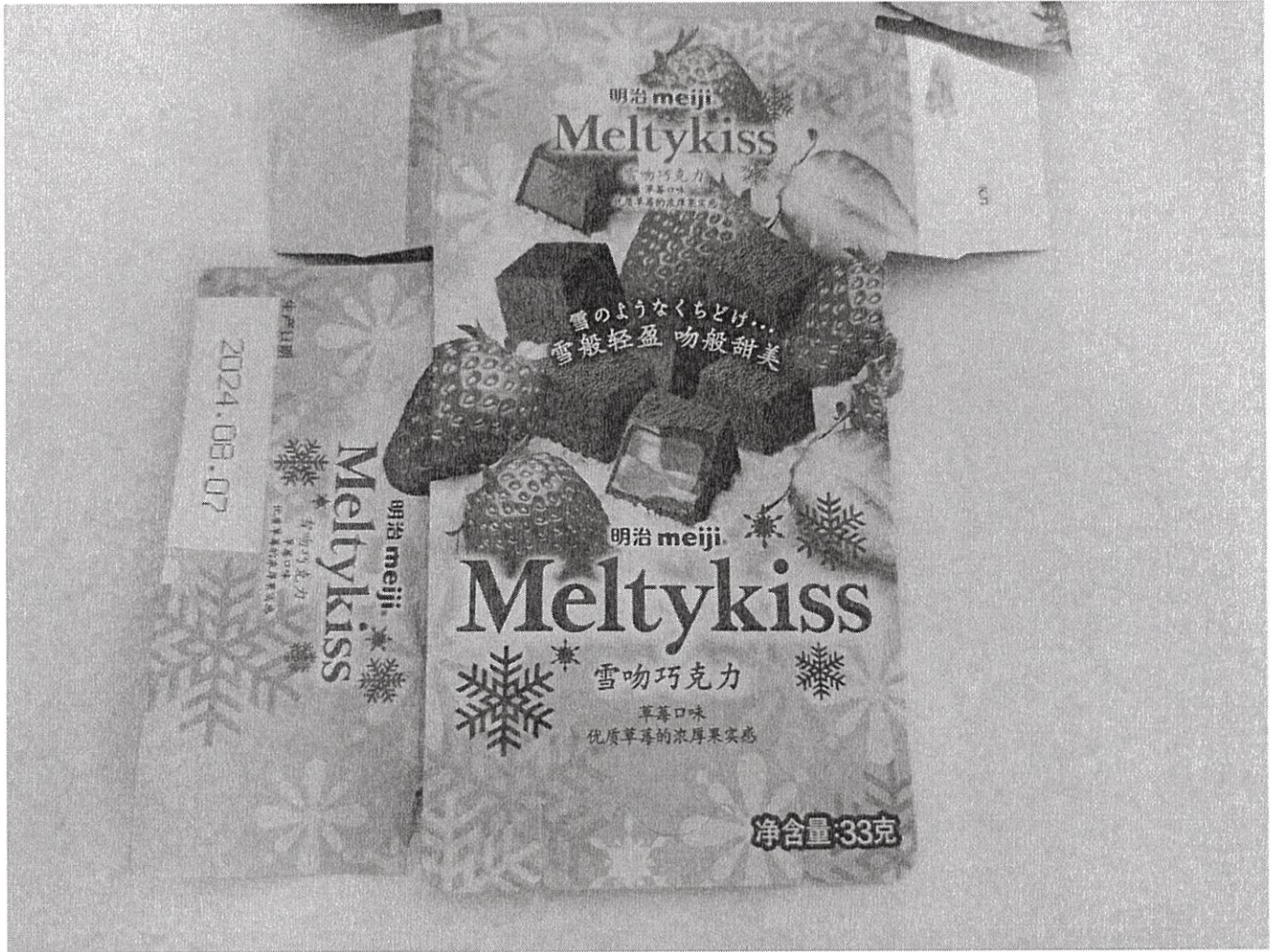
检测结果汇总						
序号	检测项目	技术要求	检测结果	检测依据	单项判定	备注
1	标签	GB 7718-2011; GB 28050-2011; GB/T 19343-2016	符合标准要求	GB 7718-2011 GB 28050-2011 GB/T 19343-2016	符合	不包括内容真实性的核实。

检测报告

报告编号: W024061014272

上海市质量监督检验技术研究院

共4页 第3页



注 意 事 项

Notices

- 1、报告无“检验检测专用章”或检测单位公章无效。

The report is valid with the "special seal for inspection and testing" or the official seal of SQI.

- 2、不得部分复制报告，复制报告须加盖“检验检测专用章”或检测单位公章，否则无效。

The report shall not be reproduced except in full. The copied report is valid with the "special seal for inspection and testing" or the official seal of SQI.

- 3、报告无主检/编制、审核、批准人签名无效。

The report is valid with signature of major inspector, reviewer and approver.

- 4、报告涂改无效。

The report is invalid with any alteration or falsification.

授权国家质检中心名称

National Center of Quality Inspection and Testing

- 1、国家日用消费品质量检验检测中心

National Center of Quality Inspection and Testing on Consumer Goods

- 2、国家家具质量检验检测中心

National Center of Quality Inspection and Testing on Furniture

- 3、国家建筑材料及装饰装修材料质量检验检测中心

National Center of Quality Inspection and Testing on Building and Decoration Materials

- 4、国家智能电网分布式电源装备质量检验检测中心（上海）

National Center of Quality Inspection and Testing on Distributed Power Equipment in Smart Grid (Shanghai)

- 5、国家电器能效与安全质量检验检测中心

National Center of Quality Inspection and Testing on Energy Efficiency and Safety of Electrical Appliance

- 6、国家食品质量检验检测中心（上海）

National Center of Quality Inspection and Testing on Food Products (Shanghai)

- 7、国家保洁产品质量检验检测中心

National Center of Quality Inspection and Testing on Cosmetics and Cleaning Products

- 8、国家电光源质量检验检测中心（上海）

National Center of Inspection and Testing on Electric Light Source Quality (Shanghai)

- 9、国家灯具质量检验检测中心

China National Lighting Fitting Quality Inspection and Testing Centre (CLTC)

声 明

Statement

- 1、本质检机构保证检测的科学性、公正性和准确性，对检测的数据、结果负责，并对客户所提供的样品和技术资料保密。

SQI pledges to conduct scientific, impartial and accurate testing, undertakes the liability of testing data and results, and protects the confidentiality of client(s)' sample(s) and technical information.

- 2、对送样委托检测报告若有异议，应于报告收到之日起十五日内向本质检机构提出，逾期不予受理。

Any objection to the test report of delivered samples shall be submitted to SQI within 15 days from the date of receiving the report; overdue submission will not be accepted.

- 3、对于非本质检机构实施抽样的检测报告，检测结果仅适用于客户提供的样品。

For the test report not sampled by SQI, the test results hereon refer only to the sample(s) provided by the client.

- 4、未经本质检机构同意，委托人不得擅自使用检测数据、结果进行不当宣传。

Without prior approval of SQI, any client shall not use the testing data and results for improper publicity.

- 5、本质检机构在资质认定证书确定的能力范围内，对社会出具具有证明作用数据、结果时，应当标注检验检测机构资质认定标志，并加盖检验检测专用章。在资质认定证书确定的能力范围外，出具的检验检测报告或者证书上不得标注检验检测机构资质认定标志，该数据、结果对社会不具有证明作用。

Within the capacity scopes of Qualification Accreditation Certificates, SQI shall issue data and results with proving effect to the society with the symbol of China Inspection Body and Laboratory Mandatory Approval (CMA) and the special seal for inspection and testing of SQI. Beyond the capacity scopes of Qualification Accreditation Certificates, SQI shall not issue test reports or certificates with the symbol of China Inspection Body and Laboratory Mandatory Approval (CMA), and the data and results thereon have no proving effect to the society.



上海市质量监督检验技术研究院所属单位一览表

Subordinate Units of Shanghai Institute of Quality Inspection and Technical Research (SQI)

- 1 食品化学产品质量检验所(代码SP)/ 国家食品质量检验检测中心(上海)/ 国家保洁产品质量检验检测中心 / 上海市食品质量监督检验站
 Institute of Quality Inspection of Food and Chemicals (SQI_SP) / National Center of Quality Inspection and Testing on Food Products (Shanghai) / National Center of Quality Inspection and Testing on Cosmetics and Cleaning Products/ Shanghai Municipal Station of Quality Supervision and Inspection of Food Products
 地址:上海市徐汇区苍梧路381号
 电话: 021-54263362
 Address: No.381, Cangwu Rd., Xuhui District, Shanghai
 Tel: 021-54263362
 地址:上海市奉贤区平庄西路3086号(日化产品)
 电话: 021-57493107
 Address: No.3086, West Pingzhuang Rd., Fengxian District, Shanghai (Daily Chemical Products)
 Post: 201499
 E-mail: shihuas@sqi.org.cn
 邮编: 200233
 传真: 021-54265730
 Post: 200233
 Fax: 021-54265730
 邮编: 201499
 传真: 021-57493162
 Tel: 021-57493107

- 2 上海时代之光照明电器检测有限公司(代码ZM)/ 国家电光源质量检验检测中心(上海)/ 国家灯具质量检验检测中心 / 国家轻工业灯具质量监督检测中心 / 上海市照明产品质量监督检验站
 Shanghai Alpha Lighting Equipment Testing Ltd. (SQI_ZM) / National Center of Inspection and Testing on Electric Light Source Quality (Shanghai) / China National Lighting Fitting Quality Inspection and Testing Centre (CLTC) / National Center for Quality Supervision and Inspection of Light Industrial Luminaries / Shanghai Municipal Station of Quality Supervision and Test on Lighting Products
 地址: 上海市闵行区江月路900号2号楼
 电话: 021-54336162, 54336173, 54336181, 54336227
 Address: 2nd Building, No.900, Jianguyue Rd., Minhang District, Shanghai
 Tel: 021-54336162, 54336173, 54336181, 54336227
 E-mail: salt@sqi.org.cn, salt@saltnet.com.cn, sdzg@sqi.org.cn
 邮编: 201114
 传真: 021-54337200
 Post: 201114
 Fax: 021-54337200

- 3 机电产品质量检验所(代码JD)/上海市机电产品质量监督检验站
 Institute of Quality Inspection of Mechanical and Electronic Products(SQI_JD)/ Shanghai Municipal Station of Quality Supervision and Inspection of Mechanical and Electronic Products
 地址: 上海市静安区万荣路918号
 电话: 021-56035307, 56652534
 Address: No.918, Wanrong Rd., Jing'an District, Shanghai
 Tel: 021-56035307, 56652534
 E-mail: jds@sqi.org.cn
 邮编: 200072
 传真: 021-56652624
 Post: 200072
 Fax: 021-56652624

- 4 轻工与化工产品质量检验所(代码QG、HG)/国家日用消费品质量检验检测中心 / 上海市轻工产品质量监督检验站 / 上海市化工产品质量监督检验站
 Institute of Quality Inspection of Light Industrial Products and Chemical Products (SQI_QG/HG) / National Center of Quality Inspection and Testing on Consumer Goods / Shanghai Municipal Station of Quality Supervision and Inspection of Light Industrial Products/ Shanghai Municipal Station of Quality Supervision and Inspection of Chemical Products
 地址: 上海市闵行区江月路900号3号楼
 电话: 021-54336172, 54336175
 Address: 3rd Building, No.900, Jianguyue Rd., Minhang District, Shanghai
 Tel: 021-54336172, 54336175
 地址: 上海市奉贤区平庄西路3086号
 电话: 021-54336172, 54336175
 Address: No.3086, West Pingzhuang Rd., Fengxian District, Shanghai
 Tel: 021-54336172, 54336175
 E-mail: qqs@sqi.org.cn, qinggong@sqi.org.cn
 邮编: 201114
 传真: 021-54336175
 Post: 201114
 Fax: 021-54336175
 邮编: 201499
 传真: 021-54336175
 Post: 201499
 Fax: 021-54336175

- 5 建材家居装饰装修质量检验所(代码JC)/ 国家家具质量检验检测中心 / 国家轻工业家具质量监督检测中心 / 国家轻工业建筑五金质量监督检测中心 / 国家建筑材料及装饰装修材料质量检验检测中心 / 上海市建筑材料及装饰装修材料质量监督检验站 / 上海市室内装饰质量监督检验站
 Institute of Quality Inspection of Building Materials and Decoration Materials (SQI_JC) / National Center of Quality Inspection and Testing on Furniture / National Center for Quality Supervision and Inspection of Light Industrial Furniture / National Center for Quality Supervision and Inspection of Light Industrial Building Hardware / National Center of Quality Inspection and Testing on Building and Decoration Materials / Shanghai Municipal Station of Quality Supervision and Inspection of Building Materials and Decoration Materials / Shanghai Municipal Station of Quality Supervision and Inspection of Interior Decoration
 地址: 上海市闵行区江月路900号5号楼
 电话: 021-54336170, 54336225
 Address: 5th Building, No.900, Jianguyue Rd., Minhang District, Shanghai
 Tel: 021-54336170, 54336225
 地址: 上海市奉贤区平庄西路3086号
 电话: 021-54336170, 54336225
 Address: No.3086, West Pingzhuang Rd., Fengxian District, Shanghai
 Tel: 021-54336170, 54336225
 E-mail: jcs@sqi.com.cn, jiancai@sqi.org.cn
 邮编: 201114
 传真: 021-54336170
 Post: 201114
 Fax: 021-54336170
 邮编: 201499
 传真: 021-54336170
 Post: 201499
 Fax: 021-54336170

- 6 电子电器家用电器质量检验所(代码DZ、DQ)/ 国家电器能效与安全质量检验检测中心 / 国家智能电网分布式电源装备质量检验检测中心(上海)/ 上海市电子电器家用电器质量监督检验站
 Institute of Quality Inspection of Electronics and Household Appliances (SQI_DZ/DQ) / National Center of Quality Inspection and Testing on Energy Efficiency and Safety of Electrical Appliance/ National Center of Quality Inspection and Testing on Distributed Power Equipment in Smart Grid (Shanghai) / Shanghai Municipal Station of Quality Supervision and Inspection of Electronics and Household Appliances
 地址: 上海市闵行区江月路900号4号楼
 电话: 021-54336322; 64336605
 E-mail: dzs@sqi.org.cn
 Address: 4th Building, No.900, Jianguyue Rd., Minhang District, Shanghai
 Tel: 021-54336322, 64336605
 E-mail: dzs@sqi.org.cn
 地址: 上海市徐汇区苍梧路381号
 电话: 021-54263097, 64336605
 Address: No.381, Cangwu Rd., Xuhui District, Shanghai Post: 200233
 Tel: 021-54263097, 64336605
 E-mail: dqs@sqi.org.cn
 邮编: 201114
 传真: 021-64313348
 Post: 201114
 Fax: 021-64313348
 邮编: 200233
 传真: 021-64850806
 Post: 200233
 Fax: 021-64850806

- 7 计量检测所(代码JL)
 Institute of Metrology Inspection(SQI_JL)
 地址: 上海市闵行区江月路900号5号楼
 电话: 021-54336149
 Address: 5th Building, No.900, Jianguyue Rd., Minhang District, Shanghai
 Tel: 021-54336149
 地址: 上海市徐汇区永嘉路627号
 电话: 021-64372125
 Address: No.627 Yongjia Rd., Xuhui District, Shanghai
 Tel: 021-64372125
 E-mail: jls@sqi.org.cn
 邮编: 201114
 传真: 021-62892960
 Post: 201114
 Post: 200031
 邮编: 200031
 传真: 021-64372135
 Post: 201114
 Fax: 021-64372135

- 8 纤维检验所(代码XW)/ 国家日用消费品质量检验检测中心 / 上海市纺织纤维质量监督检验站
 Institute of Fiber Inspection (SQI_XW) / National Center of Quality Inspection and Testing on Consumer Goods / Shanghai Municipal Station of Quality Supervision and Inspection of Textile and Fiber
 地址: 上海市长乐路1228号
 电话: 021-62495465
 Address: No.1228, Changle Rd., Shanghai
 Tel: 021-62495465
 E-mail: xws@sqi.org.cn
 邮编: 200040
 传真: 021-62481025
 Post: 200040
 Fax: 021-62481025



W024061014272-1



ejBcN4a2

检测报告

Test Report

产品名称: 雪吻巧克力(草莓口味) 33g
Name of Sample

规格型号: 33g/盒
Type

委托单位: 明治制果食品工业(上海)有限公司
Applicant

检测类别: 委托检测
Test Purpose



上海市质量监督检验技术研究院
Shanghai Institute of Quality Inspection and Technical Research



上海市质量监督检验技术研究院
检测报告

报告编号: W024061014272-1

共2页 第1页

样品名称	雪吻巧克力(草莓口味) 33g		检测类别	委托检测
型号规格等级	33g/盒 合格品		商标	明治meiji
委托单位	明治制果食品工业(上海)有限公司			
受检单位	明治制果食品工业(上海)有限公司			
标称生产单位	明治制果食品工业(上海)有限公司			
委托书编号	W024061014272	委托/抽样日期	2024.08.16	
到样日期	2024.08.16	抽样地点	/	
样品数量	5盒	受检批数量	/	
生产日期	2024.08.07	批号/编号	2024.08.07	
样品到样状态	完好			委托方送样
检测地点	上海市苍梧路381号			
检测依据	JJF 1070-2005《定量包装商品净含量计量检验规则》			
判定依据	JJF 1070-2005《定量包装商品净含量计量检验规则》			
检测日期	2024年08月16日至2024年08月26日			
检测结论	本报告仅提供单项检测结论。详见本报告检测结果汇总表。 (检测报告专用章) 签发日期: 2024年08月26日			
委托单位 通讯资料	地址	上海市松江区松江工业区新飞路1111号		
	邮编	201611	电话	67601212
备注	本报告检验检测结论是根据检验检测依据/判定依据仅对所检项目得出的,不代表未经检验检测的项目或功能符合要求。 本报告共有2份,分别为W024061014272-1, W024061014272。 相关项目未取得资质认定,仅作为科研、教学或内部质量控制之用。 注意事项、声明及所属单位一览表为本报告的组成部分。			

批准: 林琳
副科长

林琳

审核:

吴新

主检:

邱朝宏

检测报告

报告编号: W024061014272-1

上海市质量监督检验技术研究院

共2页 第2页

检测结果汇总						
序号	检测项目	技术要求	检测结果	检测依据	单项判定	备注
1	净含量允许短缺量	% ≤9	0	JJF 1070-2005	符合	0表示无短缺量,净含量仅做单件定包装,不做批量判定

(以下空白)

注 意 事 项

Notices

- 1、报告无“检验检测专用章”或检测单位公章无效。

The report is valid with the "special seal for inspection and testing" or the official seal of SQI.

- 2、不得部分复制报告，复制报告须加盖“检验检测专用章”或检测单位公章，否则无效。

The report shall not be reproduced except in full. The copied report is valid with the "special seal for inspection and testing" or the official seal of SQI.

- 3、报告无主检/编制、审核、批准人签名无效。

The report is valid with signature of major inspector, reviewer and approver.

- 4、报告涂改无效。

The report is invalid with any alteration or falsification.

授权国家质检中心名称

National Center of Quality Inspection and Testing

- 1、国家日用消费品质量检验检测中心

National Center of Quality Inspection and Testing on Consumer Goods

- 2、国家家具质量检验检测中心

National Center of Quality Inspection and Testing on Furniture

- 3、国家建筑材料及装饰装修材料质量检验检测中心

National Center of Quality Inspection and Testing on Building and Decoration Materials

- 4、国家智能电网分布式电源装备质量检验检测中心（上海）

National Center of Quality Inspection and Testing on Distributed Power Equipment in Smart Grid (Shanghai)

- 5、国家电器能效与安全质量检验检测中心

National Center of Quality Inspection and Testing on Energy Efficiency and Safety of Electrical Appliance

- 6、国家食品质量检验检测中心（上海）

National Center of Quality Inspection and Testing on Food Products (Shanghai)

- 7、国家保洁产品质量检验检测中心

National Center of Quality Inspection and Testing on Cosmetics and Cleaning Products

- 8、国家电光源质量检验检测中心（上海）

National Center of Inspection and Testing on Electric Light Source Quality (Shanghai)

- 9、国家灯具质量检验检测中心

China National Lighting Fitting Quality Inspection and Testing Centre (CLTC)

声 明

Statement

- 1、本质检机构保证检测的科学性、公正性和准确性，对检测的数据、结果负责，并对客户所提供的样品和技术资料保密。SQI pledges to conduct scientific, impartial and accurate testing, undertakes the liability of testing data and results, and protects the confidentiality of client(s)' sample(s) and technical information.

- 2、对送样委托检测报告若有异议，应于报告收到之日起十五日内向本质检机构提出，逾期不予受理。

Any objection to the test report of delivered samples shall be submitted to SQI within 15 days from the date of receiving the report; overdue submission will not be accepted.

- 3、对于非本质检机构实施抽样的检测报告，检测结果仅适用于客户提供的样品。

For the test report not sampled by SQI, the test results hereon refer only to the sample(s) provided by the client.

- 4、未经本质检机构同意，委托人不得擅自使用检测数据、结果进行不当宣传。

Without prior approval of SQI, any client shall not use the testing data and results for improper publicity.

- 5、本质检机构在资质认定证书确定的能力范围内，对社会出具具有证明作用数据、结果时，应当标注检验检测机构资质认定标志，并加盖检验检测专用章。在资质认定证书确定的能力范围外，出具的检验检测报告或者证书上不得标注检验检测机构资质认定标志，该数据、结果对社会不具有证明作用。

Within the capacity scopes of Qualification Accreditation Certificates, SQI shall issue data and results with proving effect to the society with the symbol of China Inspection Body and Laboratory Mandatory Approval (CMA) and the special seal for inspection and testing of SQI. Beyond the capacity scopes of Qualification Accreditation Certificates, SQI shall not issue test reports or certificates with the symbol of China Inspection Body and Laboratory Mandatory Approval (CMA), and the data and results thereon have no proving effect to the society.

上海市质量监督检验技术研究院所属单位一览表

Subordinate Units of Shanghai Institute of Quality Inspection and Technical Research (SQI)

- 1 食品化学产品质量检验所(代码SP)/ 国家食品质量检验检测中心(上海) / 国家保洁产品质量检验检测中心 / 上海市食品质量监督检验站
 Institute of Quality Inspection of Food and Chemicals (SQI_SP) / National Center of Quality Inspection and Testing on Food Products (Shanghai) / National Center of Quality Inspection and Testing on Cosmetics and Cleaning Products/ Shanghai Municipal Station of Quality Supervision and Inspection of Food Products
 地址:上海市徐汇区苍梧路381号 邮编: 200233
 电话: 021-54263362 传真: 021-54265730
 Address: No.381, Cangwu Rd., Xuhui District, Shanghai Post: 200233
 Tel: 021-54263362 Fax: 021-54265730
 地址:上海市奉贤区平庄西路3086号(日化产品) 邮编: 201499
 电话: 021-57493107 传真: 021-57493162
 Address: No.3086, West Pingzhuang Rd., Fengxian District, Shanghai (Daily Chemical Products) 邮编: 201499
 Post: 201499 Tel: 021-57493107
 E-mail: shihuas@sqi.org.cn

- 2 上海时代之光照明电器检测有限公司(代码ZM)/ 国家电光源质量检验检测中心(上海) / 国家灯具质量检验检测中心 / 国家轻工业灯具质量监督检测中心 / 上海市照明产品质量监督检验站
 Shanghai Alpha Lighting Equipment Testing Ltd. (SQI_ZM) / National Center of Inspection and Testing on Electric Light Source Quality (Shanghai) / China National Lighting Fitting Quality Inspection and Testing Centre (CLTC) / National Center for Quality Supervision and Inspection of Light Industrial Luminaries / Shanghai Municipal Station of Quality Supervision and Test on Lighting Products
 地址:上海市闵行区江月路900号2号楼 邮编: 201114
 电话: 021-54336162, 54336173, 54336181, 54336227 传真: 021-54337200
 Address: 2nd Building, No.900, Jianguyue Rd., Minhang District, Shanghai Post: 201114
 Tel: 021-54336162, 54336173, 54336181, 54336227 Fax: 021-54337200
 E-mail: salt@sqi.org.cn, salt@saltnet.com.cn, sdzg@sqi.org.cn

- 3 机电产品质量检验所(代码JD)/上海市机电产品质量监督检验站
 Institute of Quality Inspection of Mechanical and Electronic Products(SQI_JD)/ Shanghai Municipal Station of Quality Supervision and Inspection of Mechanical and Electronic Products
 地址:上海市静安区万荣路918号 邮编: 200072
 电话: 021-56035307, 56652534 传真: 021-56652624
 Address: No.918, Wanrong Rd., Jing' an District, Shanghai Post: 200072
 Tel: 021-56035307, 56652534 Fax: 021-56652624
 E-mail: jds@sqi.org.cn

- 4 轻工与化工产品产品质量检验所(代码QG、HG)/国家日用消费品质量检验检测中心 / 上海市轻工产品质量监督检验站 / 上海市化工产品质量监督检验站
 Institute of Quality Inspection of Light Industrial Products and Chemical Products (SQI_QG/HG) / National Center of Quality Inspection and Testing on Consumer Goods / Shanghai Municipal Station of Quality Supervision and Inspection of Light Industrial Products/ Shanghai Municipal Station of Quality Supervision and Inspection of Chemical Products
 地址:上海市闵行区江月路900号3号楼 邮编: 201114
 电话: 021-54336172, 54336175 传真: 021-54336175
 Address: 3rd Building, No.900, Jianguyue Rd., Minhang District, Shanghai Post: 201114
 Tel: 021-54336172, 54336175 Fax: 021-54336175
 地址:上海市奉贤区平庄西路3086号 邮编: 201499
 电话: 021-54336172, 54336175 传真: 021-54336175
 Address: No.3086, West Pingzhuang Rd., Fengxian District, Shanghai Post: 201499
 Tel: 021-54336172, 54336175 Fax: 021-54336175
 E-mail: qgs@sqi.org.cn, qinggong@sqi.org.cn

- 5 建材家居装饰装修质量检验所(代码JC)/ 国家家具质量检验检测中心 / 国家轻工业家具质量监督检测中心 / 国家轻工业建筑五金质量监督检测中心 / 国家建筑材料及装饰装修材料质量检验检测中心 / 上海市建筑材料及装饰装修材料质量监督检验站 / 上海市室内装饰质量监督检验站
 Institute of Quality Inspection of Building Materials and Decoration Materials (SQI_JC) / National Center of Quality Inspection and Testing on Furniture / National Center for Quality Supervision and Inspection of Light Industrial Furniture / National Center for Quality Supervision and Inspection of Light Industrial Building Hardware / National Center of Quality Inspection and Testing on Building and Decoration Materials / Shanghai Municipal Station of Quality Supervision and Inspection of Building Materials and Decoration Materials / Shanghai Municipal Station of Quality Supervision and Inspection of Interior Decoration
 地址:上海市闵行区江月路900号5号楼 邮编: 201114
 电话: 021-54336170, 54336225 传真: 021-54336170
 Address: 5th Building, No.900, Jianguyue Rd., Minhang District, Shanghai Post: 201114
 Tel: 021-54336170, 54336225 Fax: 021-54336170
 地址:上海市奉贤区平庄西路3086号 邮编: 201499
 电话: 021-54336170, 54336225 传真: 021-54336170
 Address: No.3086, West Pingzhuang Rd., Fengxian District, Shanghai Post: 201499
 Tel: 021-54336170, 54336225 Fax: 021-54336170
 E-mail: jcs@sqi.com.cn, jiancai@sqi.org.cn

- 6 电子电器家用电器质量检验所(代码DZ、DQ)/ 国家电器能效与安全质量检验检测中心 / 国家智能电网分布式电源装备质量检验检测中心(上海)/ 上海市电子电器家用电器质量监督检验站
 Institute of Quality Inspection of Electronics and Household Appliances (SQI_DZ/DQ) / National Center of Quality Inspection and Testing on Energy Efficiency and Safety of Electrical Appliance/ National Center of Quality Inspection and Testing on Distributed Power Equipment in Smart Grid (Shanghai) / Shanghai Municipal Station of Quality Supervision and Inspection of Electronics and Household Appliances
 地址:上海市闵行区江月路900号4号楼 邮编: 201114
 电话: 021-54336322; 64336605 传真: 021-64313348
 E-mail: dzs@sqi.org.cn
 Address: 4th Building, No.900, Jianguyue Rd., Minhang District, Shanghai Post: 201114
 Tel: 021-54336322, 64336605 Fax: 021-64313348
 E-mail: dzs@sqi.org.cn
 地址:上海市徐汇区苍梧路381号 邮编: 200233
 电话: 021-54263097, 64336605 传真: 021-64850806
 Address: No.381, Cangwu Rd., Xuhui District, Shanghai Post: 200233
 Tel: 021-54263097, 64336605 Fax: 021-64850806
 E-mail: dqs@sqi.org.cn

- 7 计量检测所(代码JL)
 Institute of Metrology Inspection(SQI_JL)
 地址:上海市闵行区江月路900号5号楼 邮编: 201114
 电话: 021-54336149 传真: 021-62892960
 Address: 5th Building, No.900, Jianguyue Rd., Minhang District, Shanghai Post: 201114
 Tel: 021-54336149 Post: 200031
 地址:上海市徐汇区永嘉路627号 邮编: 200031
 电话: 021-64372125 传真: 021-64372135
 Address: No.627 Yongjia Rd., Xuhui District, Shanghai Post: 201114
 Tel: 021-64372125 Fax: 021-64372135
 E-mail: jls@sqi.org.cn

- 8 纤维检验所(代码XW)/ 国家日用消费品质量检验检测中心 / 上海市纺织纤维质量监督检验站
 Institute of Fiber Inspection (SQI_XW) / National Center of Quality Inspection and Testing on Consumer Goods / Shanghai Municipal Station of Quality Supervision and Inspection of Textile and Fiber
 地址:上海市长乐路1228号 邮编: 200040
 电话: 021-62495465 传真: 021-62481025
 Address: No.1228, Changle Rd., Shanghai Post: 200040
 Tel: 021-62495465 Fax: 021-62481025
 E-mail: xws@sqi.org.cn





210900110152



W024061014270-1

检测报告

Test Report



XfUkyX6u

产品名称：雪吻巧克力（草莓口味）

Name of Sample

规格型号：/

Type

委托单位：明治制果食品工业（上海）有限公司

Applicant

检测类别：委托检测

Test Purpose



上海市质量监督检验技术研究院

Shanghai Institute of Quality Inspection and Technical Research

上海市质量监督检验技术研究院
检测报告

报告编号: W024061014270-1

共2页 第1页

样品名称	雪吻巧克力(草莓口味)		检测类别	委托检测
型号规格等级	/合格品		商标	明治meiji
委托单位	明治制果食品工业(上海)有限公司			
受检单位	明治制果食品工业(上海)有限公司			
标称生产单位	明治制果食品工业(上海)有限公司			
委托书编号	W024061014270	委托/抽样日期	2024.08.16	
到样日期	2024.08.16	抽样地点	/	
样品数量	7盒	受检批数量	/	
生产日期	2024.08.02	批号/编号	2024.08.02	
样品到样状态	完好			委托方送样
检测地点	上海市苍梧路381号			
检测依据	GB 5009.97-2023《食品安全国家标准 食品中环己基氨基磺酸盐的测定》 GB 5009.12-2023《食品安全国家标准 食品中铅的测定》 GB 5009.11-2024《食品安全国家标准 食品中总砷及无机砷的测定》 GB 4789.4-2024《食品安全国家标准 食品微生物学检验 沙门氏菌检验》			
判定依据	GB 2760-2014《食品安全国家标准 食品添加剂使用标准》 GB 2762-2022《食品安全国家标准 食品中污染物限量》 GB 29921-2021《食品安全国家标准 预包装食品中致病菌限量》			
检测日期	2024年08月16日至2024年08月26日			
检测结论	该样品本次所检项目检测结果符合上述检测依据/判定依据相关规定。详见本报告检测结果汇总表。  (检测报告专用章) 签发日期: 2024年08月26日			
委托单位通讯资料	地址	上海市松江区松江工业区新飞路1111号		
	邮编	201611	电话	67601212
备注	本报告检验检测结论是根据检验检测依据/判定依据对所检项目得出的,不代表未经检验检测的项目或功能符合要求。 本报告共有2份,分别为W024061014270-1, W024061014270。 注意事项、声明及所属单位一览表为本报告的组成部分。			

批准: 林琳
副科长

林琳

审核:

张妮

主检:

邱朝宏

检测报告

报告编号: W024061014270-1

上海市质量监督检验技术研究院

共2页 第2页

检测结果汇总						
序号	检测项目	技术要求	检测结果	检测依据	单项判定	备注
1	甜蜜素(以环己基氨基磺酸计) g/kg	不得使用	未检出 (<0.03)	GB 5009.97-2023 (第一法)	符合	/
2	铅(以Pb计) mg/kg	≤0.5	未检出 (<0.05)	GB 5009.12-2023 (第二法)	符合	/
3	总砷(以As计) mg/kg	≤0.5	0.0102	GB 5009.11-2024 (第一篇 第二法)	符合	/
4	沙门氏菌 /25g	n=5 c=0 m=0	未检出; 未检出; 未检出; 未检出; 未检出	GB 4789.4-2024	符合	/

(以下空白)

注 意 事 项

Notices

- 1、报告无“检验检测专用章”或检测单位公章无效。
The report is valid with the "special seal for inspection and testing" or the official seal of SQI.
- 2、不得部分复制报告，复制报告须加盖“检验检测专用章”或检测单位公章，否则无效。
The report shall not be reproduced except in full. The copied report is valid with the "special seal for inspection and testing" or the official seal of SQI.
- 3、报告无主检/编制、审核、批准人签名无效。
The report is valid with signature of major inspector, reviewer and approver.
- 4、报告涂改无效。
The report is invalid with any alteration or falsification.

授权国家质检中心名称

National Center of Quality Inspection and Testing

- 1、国家日用消费品质量检验检测中心
National Center of Quality Inspection and Testing on Consumer Goods
- 2、国家家具质量检验检测中心
National Center of Quality Inspection and Testing on Furniture
- 3、国家建筑材料及装饰装修材料质量检验检测中心
National Center of Quality Inspection and Testing on Building and Decoration Materials
- 4、国家智能电网分布式电源装备质量检验检测中心（上海）
National Center of Quality Inspection and Testing on Distributed Power Equipment in Smart Grid (Shanghai)
- 5、国家电器能效与安全质量检验检测中心
National Center of Quality Inspection and Testing on Energy Efficiency and Safety of Electrical Appliance
- 6、国家食品质量检验检测中心（上海）
National Center of Quality Inspection and Testing on Food Products (Shanghai)
- 7、国家保洁产品质量检验检测中心
National Center of Quality Inspection and Testing on Cosmetics and Cleaning Products
- 8、国家电光源质量检验检测中心（上海）
National Center of Inspection and Testing on Electric Light Source Quality (Shanghai)
- 9、国家灯具质量检验检测中心
China National Lighting Fitting Quality Inspection and Testing Centre (CLTC)

声 明

Statement

- 1、本质检机构保证检测的科学性、公正性和准确性，对检测的数据、结果负责，并对客户所提供的样品和技术资料保密。
SQI pledges to conduct scientific, impartial and accurate testing, undertakes the liability of testing data and results, and protects the confidentiality of client(s)' sample(s) and technical information.
- 2、对送样委托检测报告若有异议，应于报告收到之日起十五日内向本质检机构提出，逾期不予受理。
Any objection to the test report of delivered samples shall be submitted to SQI within 15 days from the date of receiving the report; overdue submission will not be accepted.
- 3、对于非本质检机构实施抽样的检测报告，检测结果仅适用于客户提供的样品。
For the test report not sampled by SQI, the test results hereon refer only to the sample(s) provided by the client.
- 4、未经本质检机构同意，委托人不得擅自使用检测数据、结果进行不当宣传。
Without prior approval of SQI, any client shall not use the testing data and results for improper publicity.
- 5、本质检机构在资质认定证书确定的能力范围内，对社会出具具有证明作用数据、结果时，应当标注检验检测机构资质认定标志，并加盖检验检测专用章。在资质认定证书确定的能力范围外，出具的检验检测报告或者证书上不得标注检验检测机构资质认定标志，该数据、结果对社会不具有证明作用。
Within the capacity scopes of Qualification Accreditation Certificates, SQI shall issue data and results with proving effect to the society with the symbol of China Inspection Body and Laboratory Mandatory Approval (CMA) and the special seal for inspection and testing of SQI. Beyond the capacity scopes of Qualification Accreditation Certificates, SQI shall not issue test reports or certificates with the symbol of China Inspection Body and Laboratory Mandatory Approval (CMA), and the data and results thereon have no proving effect to the society.

上海市质量监督检验技术研究院所属单位一览表

Subordinate Units of Shanghai Institute of Quality Inspection and Technical Research (SQI)

- 1 食品化学产品质量检验所(代码SP)/ 国家食品质量检验检测中心(上海) / 国家保洁产品质量检验检测中心 / 上海市食品质量监督检验站
Institute of Quality Inspection of Food and Chemicals (SQI_SP) / National Center of Quality Inspection and Testing on Food Products (Shanghai) / National Center of Quality Inspection and Testing on Cosmetics and Cleaning Products/ Shanghai Municipal Station of Quality Supervision and Inspection of Food Products

地址:上海市徐汇区苍梧路381号 邮编: 200233
电话: 021-54263362 传真: 021-54265730
Address: No.381, Cangwu Rd., Xuhui District, Shanghai Post: 200233
Tel: 021-54263362 Fax: 021-54265730
地址:上海市奉贤区平庄西路3086号(日化产品) 邮编: 201499
电话: 021-57493107 传真: 021-57493162
Address: No.3086, West Pingzhuang Rd., Fengxian District, Shanghai (Daily Chemical Products) 邮编: 201499
Post: 201499 Tel: 021-57493107
E-mail: shihuas@sqi.org.cn
- 2 上海时代之光照明电器检测有限公司(代码ZM)/ 国家电光源质量检验检测中心(上海) / 国家灯具质量检验检测中心 / 国家轻工业灯具质量监督检测中心 / 上海市照明产品质量监督检验站
Shanghai Alpha Lighting Equipment Testing Ltd. (SQI_ZM) / National Center of Inspection and Testing on Electric Light Source Quality (Shanghai) / China National Lighting Fitting Quality Inspection and Testing Centre (CLTC) / National Center for Quality Supervision and Inspection of Light Industrial Luminaries / Shanghai Municipal Station of Quality Supervision and Test on Lighting Products

地址: 上海市闵行区江月路900号2号楼 邮编: 201114
电话: 021-54336162, 54336173, 54336181, 54336227 传真: 021-54337200
Address: 2nd Building, No.900, Jianguyue Rd., Minhang District, Shanghai Post: 201114
Tel: 021-54336162, 54336173, 54336181, 54336227 Fax: 021-54337200
E-mail: salt@sqi.org.cn, salt@saltnet.com.cn, sdzg@sqi.org.cn
- 3 机电产品质量检验所(代码JD)/上海市机电产品质量监督检验站
Institute of Quality Inspection of Mechanical and Electronic Products(SQI_JD)/ Shanghai Municipal Station of Quality Supervision and Inspection of Mechanical and Electronic Products

地址: 上海市静安区万荣路918号 邮编: 200072
电话: 021-56035307, 56652534 传真: 021-56652624
Address: No.918, Wanrong Rd., Jing' an District, Shanghai Post: 200072
Tel: 021-56035307, 56652534 Fax: 021-56652624
E-mail: jds@sqi.org.cn
- 4 轻工与化工产品质量检验所(代码QG、HG)/国家日用消费品质量检验检测中心 / 上海市轻工产品质量监督检验站 / 上海市化工产品质量监督检验站
Institute of Quality Inspection of Light Industrial Products and Chemical Products (SQI_QG/HG) / National Center of Quality Inspection and Testing on Consumer Goods / Shanghai Municipal Station of Quality Supervision and Inspection of Light Industrial Products/ Shanghai Municipal Station of Quality Supervision and Inspection of Chemical Products

地址: 上海市闵行区江月路900号3号楼 邮编: 201114
电话: 021-54336172, 54336175 传真: 021-54336175
Address: 3rd Building, No.900, Jianguyue Rd., Minhang District, Shanghai Post: 201114
Tel: 021-54336172, 54336175 Fax: 021-54336175
地址: 上海市奉贤区平庄西路3086号 邮编: 201499
电话: 021-54336172, 54336175 传真: 021-54336175
Address: No.3086, West Pingzhuang Rd., Fengxian District, Shanghai Post: 201499
Tel: 021-54336172, 54336175 Fax: 021-54336175
E-mail: qgs@sqi.org.cn, qinggong@sqi.org.cn
- 5 建材家居装饰装修质量检验所(代码JC)/ 国家家具质量检验检测中心 / 国家轻工业家具质量监督检测中心 / 国家轻工业建筑五金质量监督检测中心 / 国家建筑材料及装饰装修材料质量检验检测中心 / 上海市建筑材料及装饰装修材料质量监督检验站 / 上海市室内装饰质量监督检验站
Institute of Quality Inspection of Building Materials and Decoration Materials (SQI_JC) / National Center of Quality Inspection and Testing on Furniture / National Center for Quality Supervision and Inspection of Light Industrial Furniture / National Center for Quality Supervision and Inspection of Light Industrial Building Hardware / National Center of Quality Inspection and Testing on Building and Decoration Materials / Shanghai Municipal Station of Quality Supervision and Inspection of Building Materials and Decoration Materials / Shanghai Municipal Station of Quality Supervision and Inspection of Interior Decoration

地址: 上海市闵行区江月路900号5号楼 邮编: 201114
电话: 021-54336170, 54336225 传真: 021-54336170
Address: 5th Building, No.900, Jianguyue Rd., Minhang District, Shanghai Post: 201114
Tel: 021-54336170, 54336225 Fax: 021-54336170
地址: 上海市奉贤区平庄西路3086号 邮编: 201499
电话: 021-54336170, 54336225 传真: 021-54336170
Address: No.3086, West Pingzhuang Rd., Fengxian District, Shanghai Post: 201499
Tel: 021-54336170, 54336225 Fax: 021-54336170
E-mail: jcs@sqi.com.cn, jiancai@sqi.org.cn
- 6 电子电器家用电器质量检验所(代码DZ、DQ)/ 国家电器能效与安全质量检验检测中心 / 国家智能电网分布式电源装备质量检验检测中心(上海) / 上海市电子电器家用电器质量监督检验站
Institute of Quality Inspection of Electronics and Household Appliances (SQI_DZ/DQ) / National Center of Quality Inspection and Testing on Energy Efficiency and Safety of Electrical Appliance/ National Center of Quality Inspection and Testing on Distributed Power Equipment in Smart Grid (Shanghai) / Shanghai Municipal Station of Quality Supervision and Inspection of Electronics and Household Appliances

地址: 上海市闵行区江月路900号4号楼 邮编: 201114
电话: 021-54336322; 64336605 传真: 021-64313348
E-mail: dzs@sqi.org.cn
Address: 4th Building, No.900, Jianguyue Rd., Minhang District, Shanghai Post: 201114
Tel: 021-54336322, 64336605 Fax: 021-64313348
E-mail: dzs@sqi.org.cn
地址: 上海市徐汇区苍梧路381号 邮编: 200233
电话: 021-54263097, 64336605 传真: 021-64850806
Address: No.381, Cangwu Rd., Xuhui District, Shanghai Post: 200233
Tel: 021-54263097, 64336605 Fax: 021-64850806
E-mail: dqs@sqi.org.cn
- 7 计量检测所(代码JL)
Institute of Metrology Inspection(SQI_JL)

地址: 上海市闵行区江月路900号5号楼 邮编: 201114
电话: 021-54336149 传真: 021-62892960
Address: 5th Building, No.900, Jianguyue Rd., Minhang District, Shanghai Post: 201114
Tel: 021-54336149 Post: 200031
地址: 上海市徐汇区永嘉路627号 邮编: 200031
电话: 021-64372125 传真: 021-64372135
Address: No.627 Yongjia Rd., Xuhui District, Shanghai Post: 201114
Tel: 021-64372125 Fax: 021-64372135
E-mail: jls@sqi.org.cn
- 8 纤维检验所(代码XW)/ 国家日用消费品质量检验检测中心 / 上海市纺织纤维质量监督检验站
Institute of Fiber Inspection (SQI_XW) / National Center of Quality Inspection and Testing on Consumer Goods / Shanghai Municipal Station of Quality Supervision and Inspection of Textile and Fiber

地址: 上海市长乐路1228号 邮编: 200040
电话: 021-62495465 传真: 021-62481025
Address: No.1228, Changle Rd., Shanghai Post: 200040
Tel: 021-62495465 Fax: 021-62481025
E-mail: xws@sqi.org.cn



210900110152



中国认可
国际互认
检测
TESTING
CNAS L0128



W024061014270

检测报告

Test Report



Wk J8zKs5

产品名称：雪吻巧克力（草莓口味）
Name of Sample

规格型号：/
Type

委托单位：明治制果食品工业（上海）有限公司
Applicant

检测类别：委托检测
Test Purpose



上海市质量监督检验技术研究院
Shanghai Institute of Quality Inspection and Technical Research

上海市质量监督检验技术研究院
检测报告

报告编号: W024061014270

共2页 第1页

样品名称	雪吻巧克力(草莓口味)		检测类别	委托检测
型号规格等级	/合格品		商标	明治meiji
委托单位	明治制果食品工业(上海)有限公司			
受检单位	明治制果食品工业(上海)有限公司			
标称生产单位	明治制果食品工业(上海)有限公司			
委托书编号	W024061014270	委托/抽样日期	2024.08.16	
到样日期	2024.08.16	抽样地点	/	
样品数量	7盒	受检批数量	/	
生产日期	2024.08.02	批号/编号	2024.08.02	
样品到样状态	完好			委托方送样
检测地点	上海市苍梧路381号			
检测依据	GB/T 19343-2016《巧克力及巧克力制品、代可可脂巧克力及代可可脂巧克力制品》 GB 5009.28-2016《食品安全国家标准 食品中苯甲酸、山梨酸和糖精钠的测定》			
判定依据	GB/T 19343-2016《巧克力及巧克力制品、代可可脂巧克力及代可可脂巧克力制品》 GB 2760-2014《食品安全国家标准 食品添加剂使用标准》			
检测日期	2024年08月16日至2024年08月26日			
检测结论	该样品本次所检项目检测结果符合上述检测依据/判定依据相关规定。详见本报告检测结果汇总表。 (检测报告专用章) 签发日期: 2024年08月26日			
委托单位通讯资料	地址	上海市松江区松江工业区新飞路1111号		
	邮编	201611	电话	67601212
备注	本报告检验检测结论是根据检验检测依据/判定依据仅对所检项目得出的,不代表未经检验检测的项目或功能符合要求。 本报告共有2份,分别为W024061014270, W024061014270-1。 非脂可可固形物、总可可固形物、乳脂肪、总乳固体、巧克力制品中巧克力的质量分数由企业提供。 注意事项、声明及所属单位一览表为本报告的组成部分。			

批准: 林琳
副科长

林琳

审核:

张妮

主检:

邱朝宏

检测报告

报告编号: W024061014270

上海市质量监督检验技术研究院

共2页 第2页

检测结果汇总

序号	检测项目	技术要求	检测结果	检测依据	单项判定	备注
1	感官	具有巧克力、巧克力制品具体产品应有的色泽、形态、组织、香味和滋味,无异味,无正常视力可见的外来杂质。	正常	GB/T 19343-2016 (7.1)	符合	/
2	非脂可可固形物(以干物质计) g/100g	≥ 2.5	8	/	符合	/
3	总可可固形物(以干物质计) g/100g	≥ 25	41	/	符合	/
4	乳脂肪(以干物质计) g/100g	≥ 2.5	6	/	符合	/
5	总乳固体(以干物质计) g/100g	≥ 12	15	/	符合	/
6	巧克力制品中巧克力的质量分数 g/100g	≥ 25	44	/	符合	/
7	糖精钠(以糖精计) g/kg	不得使用	未检出 (< 0.01)	GB 5009.28-2016 (第一法)	符合	/

(以下空白)

注 意 事 项

Notices

- 1、报告无“检验检测专用章”或检测单位公章无效。
The report is valid with the "special seal for inspection and testing" or the official seal of SQI.
- 2、不得部分复制报告，复制报告须加盖“检验检测专用章”或检测单位公章，否则无效。
The report shall not be reproduced except in full. The copied report is valid with the "special seal for inspection and testing" or the official seal of SQI.
- 3、报告无主检/编制、审核、批准人签名无效。
The report is valid with signature of major inspector, reviewer and approver.
- 4、报告涂改无效。
The report is invalid with any alteration or falsification.

授权国家质检中心名称

National Center of Quality Inspection and Testing

- 1、国家日用消费品质量检验检测中心
National Center of Quality Inspection and Testing on Consumer Goods
- 2、国家家具质量检验检测中心
National Center of Quality Inspection and Testing on Furniture
- 3、国家建筑材料及装饰装修材料质量检验检测中心
National Center of Quality Inspection and Testing on Building and Decoration Materials
- 4、国家智能电网分布式电源装备质量检验检测中心（上海）
National Center of Quality Inspection and Testing on Distributed Power Equipment in Smart Grid (Shanghai)
- 5、国家电器能效与安全质量检验检测中心
National Center of Quality Inspection and Testing on Energy Efficiency and Safety of Electrical Appliance
- 6、国家食品质量检验检测中心（上海）
National Center of Quality Inspection and Testing on Food Products (Shanghai)
- 7、国家保洁产品质量检验检测中心
National Center of Quality Inspection and Testing on Cosmetics and Cleaning Products
- 8、国家电光源质量检验检测中心（上海）
National Center of Inspection and Testing on Electric Light Source Quality (Shanghai)
- 9、国家灯具质量检验检测中心
China National Lighting Fitting Quality Inspection and Testing Centre (CLTC)

声 明

Statement

- 1、本质检机构保证检测的科学性、公正性和准确性，对检测的数据、结果负责，并对客户所提供的样品和技术资料保密。
SQI pledges to conduct scientific, impartial and accurate testing, undertakes the liability of testing data and results, and protects the confidentiality of client(s)' sample(s) and technical information.
- 2、对送样委托检测报告若有异议，应于报告收到之日起十五日内向本质检机构提出，逾期不予受理。
Any objection to the test report of delivered samples shall be submitted to SQI within 15 days from the date of receiving the report; overdue submission will not be accepted.
- 3、对于非本质检机构实施抽样的检测报告，检测结果仅适用于客户提供的样品。
For the test report not sampled by SQI, the test results hereon refer only to the sample(s) provided by the client.
- 4、未经本质检机构同意，委托人不得擅自使用检测数据、结果进行不当宣传。
Without prior approval of SQI, any client shall not use the testing data and results for improper publicity.
- 5、本质检机构在资质认定证书确定的能力范围内，对社会出具具有证明作用数据、结果时，应当标注检验检测机构资质认定标志，并加盖检验检测专用章。在资质认定证书确定的能力范围外，出具的检验检测报告或者证书上不得标注检验检测机构资质认定标志，该数据、结果对社会不具有证明作用。
Within the capacity scopes of Qualification Accreditation Certificates, SQI shall issue data and results with proving effect to the society with the symbol of China Inspection Body and Laboratory Mandatory Approval (CMA) and the special seal for inspection and testing of SQI. Beyond the capacity scopes of Qualification Accreditation Certificates, SQI shall not issue test reports or certificates with the symbol of China Inspection Body and Laboratory Mandatory Approval (CMA), and the data and results thereon have no proving effect to the society.

上海市质量监督检验技术研究院所属单位一览表

Subordinate Units of Shanghai Institute of Quality Inspection and Technical Research (SQI)

- 1 食品化学产品质量检验所(代码SP)/ 国家食品质量检验检测中心(上海)/ 国家保洁产品质量检验检测中心 / 上海市食品质量监督检验站
 Institute of Quality Inspection of Food and Chemicals (SQI_SP) / National Center of Quality Inspection and Testing on Food Products (Shanghai) / National Center of Quality Inspection and Testing on Cosmetics and Cleaning Products/ Shanghai Municipal Station of Quality Supervision and Inspection of Food Products
 地址:上海市徐汇区苍梧路381号 邮编: 200233
 电话: 021-54263362 传真: 021-54265730
 Address: No.381, Cangwu Rd., Xuhui District, Shanghai Post: 200233
 Tel: 021-54263362 Fax: 021-54265730
 地址:上海市奉贤区平庄西路3086号(日化产品) 邮编: 201499
 电话: 021-57493107 传真: 021-57493162
 Address: No.3086, West Pingzhuang Rd., Fengxian District, Shanghai (Daily Chemical Products) Post: 201499
 Tel: 021-57493107 传真: 021-57493162
 Post: 201499 Tel: 021-57493107
 E-mail: shihuas@sqi.org.cn

- 2 上海时代之光照明电器检测有限公司(代码ZM)/ 国家电光源质量检验检测中心(上海)/ 国家灯具质量检验检测中心 / 国家轻工业灯具质量监督检测中心 / 上海市照明产品质量监督检验站
 Shanghai Alpha Lighting Equipment Testing Ltd. (SQI_ZM) / National Center of Inspection and Testing on Electric Light Source Quality (Shanghai) / China National Lighting Fitting Quality Inspection and Testing Centre (CLTC) / National Center for Quality Supervision and Inspection of Light Industrial Luminaries / Shanghai Municipal Station of Quality Supervision and Test on Lighting Products
 地址: 上海市闵行区江月路900号2号楼 邮编: 201114
 电话: 021-54336162, 54336173, 54336181, 54336227 传真: 021-54337200
 Address: 2nd Building, No.900, Jiangyue Rd., Minhang District, Shanghai Post: 201114
 Tel: 021-54336162, 54336173, 54336181, 54336227 Fax: 021-54337200
 E-mail: salt@sqi.org.cn, salt@saltnet.com.cn, sdzg@sqi.org.cn

- 3 机电产品质量检验所(代码JD)/上海市机电产品质量监督检验站
 Institute of Quality Inspection of Mechanical and Electronic Products(SQI_JD)/ Shanghai Municipal Station of Quality Supervision and Inspection of Mechanical and Electronic Products
 地址: 上海市静安区万荣路918号 邮编: 200072
 电话: 021-56035307, 56652534 传真: 021-56652624
 Address: No.918, Wanrong Rd., Jing' an District, Shanghai Post: 200072
 Tel: 021-56035307, 56652534 Fax: 021-56652624
 E-mail: jds@sqi.org.cn

- 4 轻工与化工产品质量检验所(代码QG、HG)/国家日用消费品质量检验检测中心 / 上海市轻工产品质量监督检验站 / 上海市化工产品质量监督检验站
 Institute of Quality Inspection of Light Industrial Products and Chemical Products (SQI_QG/HG) / National Center of Quality Inspection and Testing on Consumer Goods / Shanghai Municipal Station of Quality Supervision and Inspection of Light Industrial Products/ Shanghai Municipal Station of Quality Supervision and Inspection of Chemical Products
 地址: 上海市闵行区江月路900号3号楼 邮编: 201114
 电话: 021-54336172, 54336175 传真: 021-54336175
 Address: 3rd Building, No.900, Jiangyue Rd., Minhang District, Shanghai Post: 201114
 Tel: 021-54336172, 54336175 Fax: 021-54336175
 地址: 上海市奉贤区平庄西路3086号 邮编: 201499
 电话: 021-54336172, 54336175 传真: 021-54336175
 Address: No.3086, West Pingzhuang Rd., Fengxian District, Shanghai Post: 201499
 Tel: 021-54336172, 54336175 Fax: 021-54336175
 E-mail: qgs@sqi.org.cn, qinggong@sqi.org.cn

- 5 建材家居装饰装修质量检验所(代码JC)/ 国家家具质量检验检测中心 / 国家轻工业家具质量监督检测中心 / 国家轻工业建筑五金质量监督检测中心 / 国家建筑材料及装饰装修材料质量检验检测中心 / 上海市建筑材料及装饰装修材料质量监督检验站 / 上海市室内装饰质量监督检验站
 Institute of Quality Inspection of Building Materials and Decoration Materials (SQI_JC) / National Center of Quality Inspection and Testing on Furniture / National Center for Quality Supervision and Inspection of Light Industrial Furniture / National Center for Quality Supervision and Inspection of Light Industrial Building Hardware / National Center of Quality Inspection and Testing on Building and Decoration Materials / Shanghai Municipal Station of Quality Supervision and Inspection of Building Materials and Decoration Materials / Shanghai Municipal Station of Quality Supervision and Inspection of Interior Decoration
 地址: 上海市闵行区江月路900号5号楼 邮编: 201114
 电话: 021-54336170, 54336225 传真: 021-54336170
 Address: 5th Building, No.900, Jiangyue Rd., Minhang District, Shanghai Post: 201114
 Tel: 021-54336170, 54336225 Fax: 021-54336170
 地址: 上海市奉贤区平庄西路3086号 邮编: 201499
 电话: 021-54336170, 54336225 传真: 021-54336170
 Address: No.3086, West Pingzhuang Rd., Fengxian District, Shanghai Post: 201499
 Tel: 021-54336170, 54336225 Fax: 021-54336170
 E-mail: jcs@sqi.com.cn, jiancai@sqi.org.cn

- 6 电子电器家用电器质量检验所(代码DZ、DQ)/ 国家电器能效与安全质量检验检测中心 / 国家智能电网分布式电源装备质量检验检测中心(上海)/ 上海市电子电器家用电器质量监督检验站
 Institute of Quality Inspection of Electronics and Household Appliances (SQI_DZ/DQ) / National Center of Quality Inspection and Testing on Energy Efficiency and Safety of Electrical Appliance/ National Center of Quality Inspection and Testing on Distributed Power Equipment in Smart Grid (Shanghai) / Shanghai Municipal Station of Quality Supervision and Inspection of Electronics and Household Appliances
 地址: 上海市闵行区江月路900号4号楼 邮编: 201114
 电话: 021-54336322; 64336605 传真: 021-64313348
 E-mail: dzs@sqi.org.cn Post: 201114
 Address: 4th Building, No.900, Jiangyue Rd., Minhang District, Shanghai Fax: 021-64313348
 Tel: 021-54336322, 64336605 Post: 201114
 E-mail: dzs@sqi.org.cn Fax: 021-64313348
 地址: 上海市徐汇区苍梧路381号 邮编: 200233
 电话: 021-54263097, 64336605 传真: 021-64850806
 Address: No.381, Cangwu Rd., Xuhui District, Shanghai Post: 200233
 Tel: 021-54263097, 64336605 Fax: 021-64850806
 E-mail: dq@sqi.org.cn

- 7 计量检测所(代码JL)
 Institute of Metrology Inspection(SQI_JL)
 地址: 上海市闵行区江月路900号5号楼 邮编: 201114
 电话: 021-54336149 传真: 021-62892960
 Address: 5th Building, No.900, Jiangyue Rd., Minhang District, Shanghai Post: 201114
 Tel: 021-54336149 Post: 200031
 地址: 上海市徐汇区永嘉路627号 邮编: 200031
 电话: 021-64372125 传真: 021-64372135
 Address: No.627 Yongjia Rd., Xuhui District, Shanghai Post: 201114
 Tel: 021-64372125 Fax: 021-64372135
 E-mail: jls@sqi.org.cn

- 8 纤维检验所(代码XW)/ 国家日用消费品质量检验检测中心 / 上海市纺织纤维质量监督检验站
 Institute of Fiber Inspection (SQI_XW) / National Center of Quality Inspection and Testing on Consumer Goods / Shanghai Municipal Station of Quality Supervision and Inspection of Textile and Fiber
 地址: 上海市长乐路1228号 邮编: 200040
 电话: 021-62495465 传真: 021-62481025
 Address: No.1228, Changle Rd., Shanghai Post: 200040
 Tel: 021-62495465 Fax: 021-62481025
 E-mail: xws@sqi.org.cn